



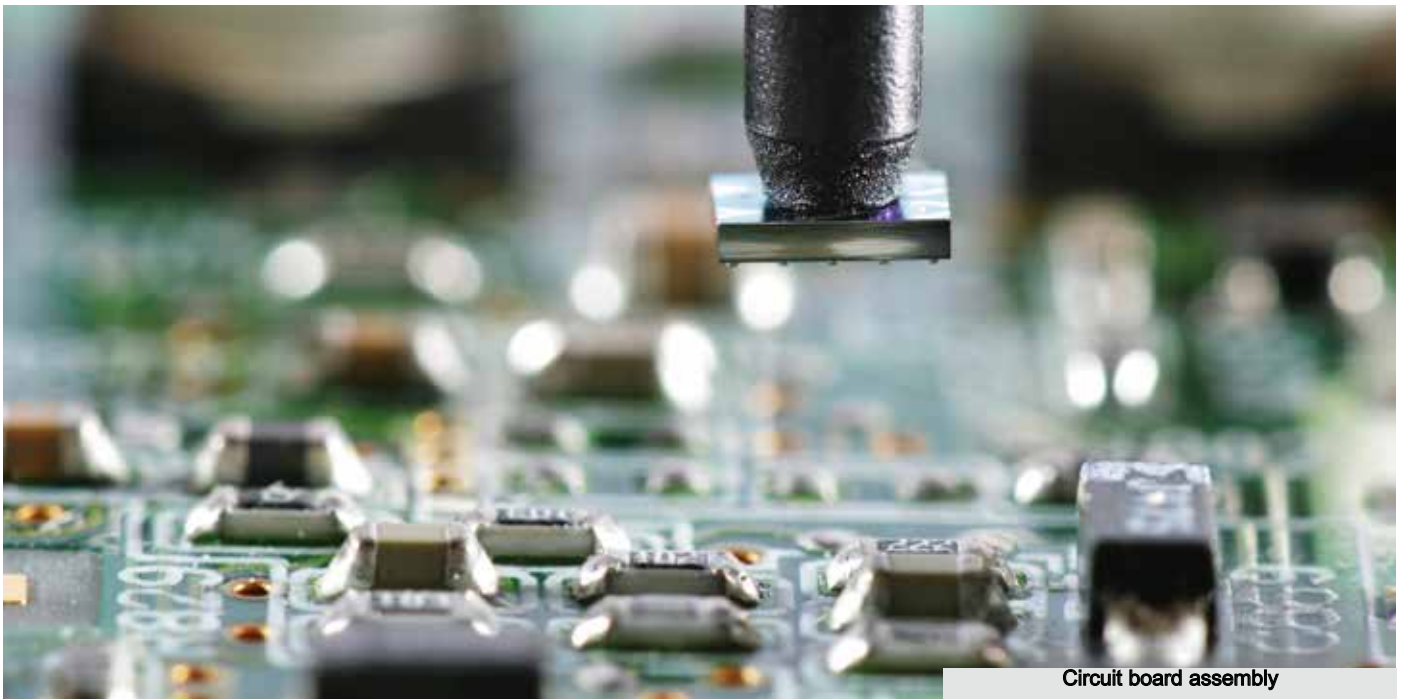
Electronic Locking Systems for Cabinets and Housings

<i>Rack Management Systems - Chapter 11A</i>	<i>Page</i>
Locks/latches:	
Swinghandle Agent E Wireless (swinghandle for rod control or cam)	11A-110
Swinghandle Agent E Wireless (for furniture doors)	11A-115
Swinghandle Agent E Wired (swinghandle for rod control or cam)	11A-120
Swinghandle 1150 with electromechanical release and emergency opening	11A-130
Single point latch with emergency opening	11A-140
eCam Electromechanical lock for cams	11A-144
ePush Lock Electromechanical push locking system (Push-Push)	11A-146
Swinghandle 1317 with RC2; mechanical or electromechanical release	11A-150
Swinghandle 1154 with electromechanical release and emergency opening	11A-160
Units:	11A-200
19" Rack	11A-210
Control Unit; Access Unit Wireless	11A-220
Access Units	11A-230
Locking Unit; Sensor Unit	11A-240
Card reader	11A-250
further components	11A-260
Sensors:	11A-300
Climate sensors	11A-310
Acceleration sensor	11A-320
Accessories	11A-400
Software:	11A-500
EMKA Control Cockpit	11A-510
Index	11A-600
<i>Stand-alone systems - chapter 11B</i>	<i>Page</i>
Stand-alone version with swinghandle Agent E RFID stand-alone	11B-110
Stand-alone version with swinghandle Agent E RFID stand-alone	11B-115
Stand-alone version with keypad lock	11B-120
Stand-alone version with combination handle	11B-130
Stand-alone version with keypad lock	11B-140
Keypad with integrated card reader	11B-180
Accessories for stand-alone version	11B-200
Accessories for stand-alone version	11B-210
Index	11B-300

List of contents



Plastic injection moulding



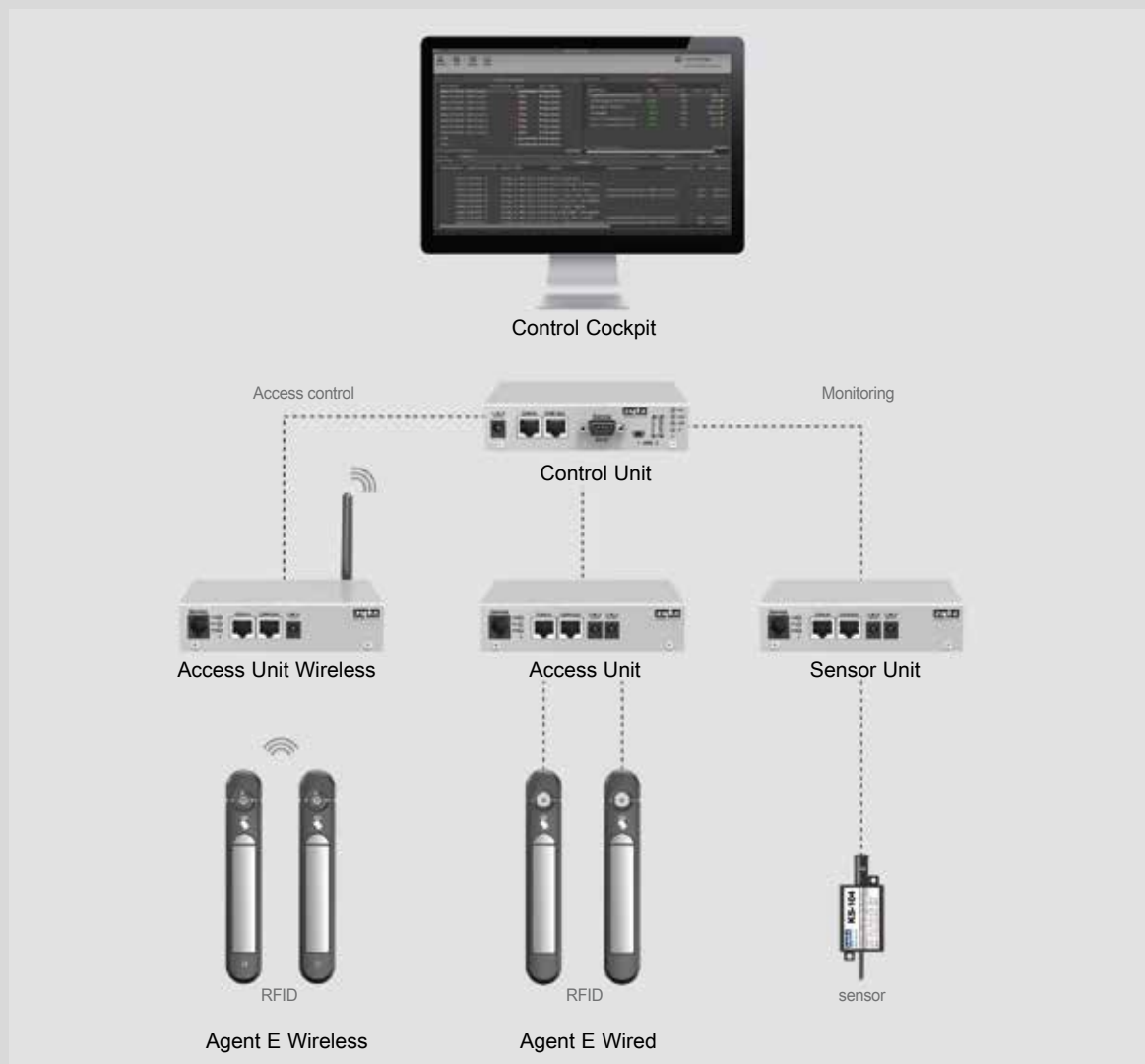
Circuit board assembly

Sales Worldwide

The EMKA group is the world market leader for locks, hinges and gasketing on switch and control cabinets. In the business division EMKA Electronics electronic access control systems are developed and produced. The EMKA Rack Management Systems are installed worldwide amongst others in data centres of banks and co-location centres.

In-House Production

The company is represented in 52 countries employing more than 2,100 employees. The more than 15,000 items are developed, manufactured, refined and assembled at eight production sites in Germany, France, England, Spain, Bosnia-Herzegovina and Serbia.



Intelligent systematic rack management

The Rack Management System by EMKA Electronics guarantees unambiguous logging and backtracking due to its personified access control down to cabinet level. Moreover, the system monitors all physical parameters in the rack and thus increases the operational reliability of the entire installation. It consists of a database-driven control software, high-capacity modules and electromechanical handles.

The modular structure and the standardised connection technology enable a simple installation and a fast start-up. Wireless handles reduce the time and effort for mounting significantly and cut the investment costs.

The functionality of the system can be enhanced and complemented any time by adding further modules.

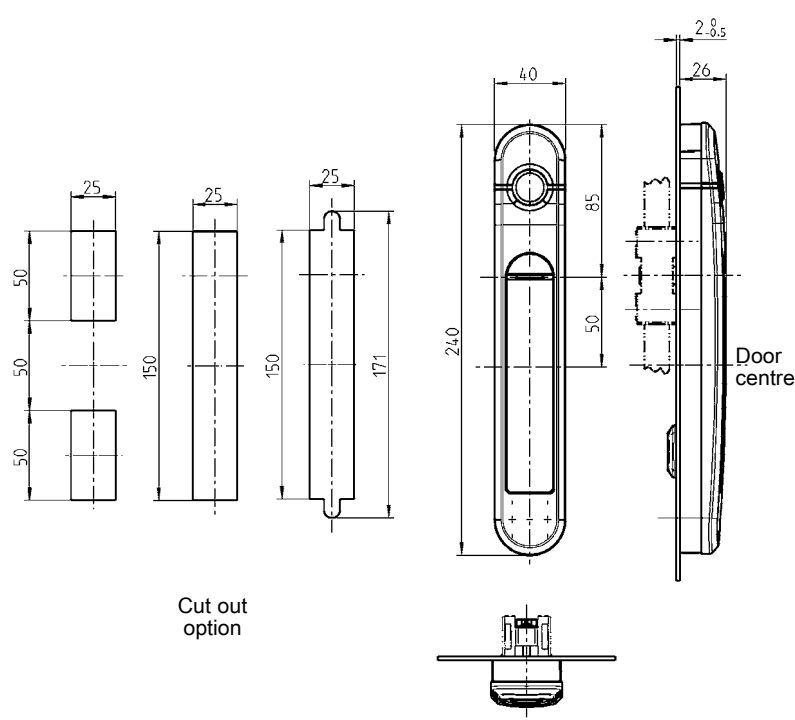


Control access reliably

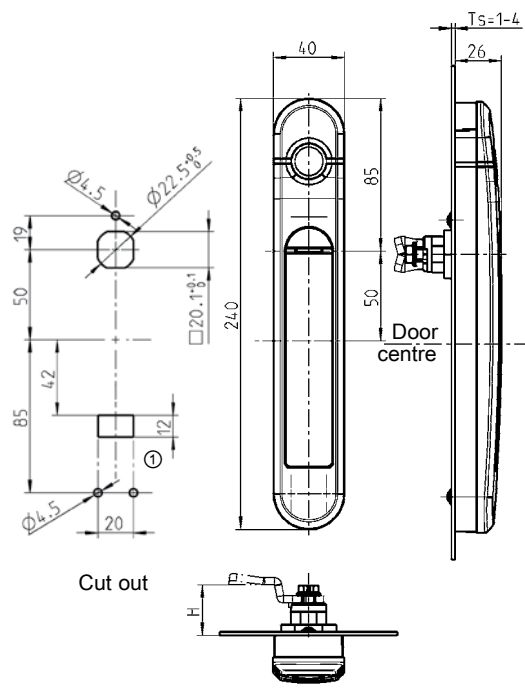
With the software Control Cockpit you can monitor all Control Units. The views of access control or operating status can be configured according to your requirements. All access attempts to server racks are logged and completely documented. All operating status are displayed and alarms directly transmitted to the operator. The open database structure with SQL interface enables a simple integration into higher level systems.

Swinghandle Agent E Wireless

Swinghandle for rod control or bearing bush



Swinghandle for cam



Swinghandle Agent E Wireless - functions

Tk = door contact

Mode of operation	Authentication	Power	Opening standard	Opening Optional	Connection option
Wireless	RFID card (125 kHz or 13.56 MHz)	Battery	immediately	--	Tk

max. 16 Access Units Wireless per Control Unit ≅ 1,200 handles Agent E Wireless



The Agent E Wireless is still the only swinghandle with wireless communication.

Due to its wireless and thus cost-saving mounting it is most suitable for retrofitting in data centres.

The authentication is done via RFID cards.

A highly-efficient power management guarantees a long battery life.



Features

- Wireless communication for data exchange via wireless network with Access Units Wireless (industrial standard according to national regulations)
- One Control Unit can actuate up to 1,200 handles Agent E Wireless using Access Units Wireless in one wireless network
- The authentication can be effected by RFID cards with 125 kHz or 13.56 MHz. Remote opening is always possible in addition
- Extremely energy-efficient battery operation (battery life min. 3 years)
- 4 eyes principle for authentication with 2 authorised RFID cards
- The handle has a connector for adding a door contact
- An emergency power function is possible with the integrated USB port
- Agent E Wireless is most suitable for retrofitting due to its wireless mounting
- The installation in cabinets / racks of different manufacturers is solved with various adapters. On request



Swinghandle AGENT E consisting of:
 dish polyamide GF black;
 handle and shaft zinc-die powder-coated white aluminium;
 2 batteries;
 mounting and operating instructions

③ WIRELESS type for all EU countries plus Switzerland and Norway

for rod control or bearing bush

for cam

Wireless with RFID 125 kHz

on request

on request

Wireless with RFID 13.56 MHz

3000-U911-41

3000-U911-42

RFID Card

125 kHz

3000-87

13.56 MHz

3000-88

Adapter set for bearing bush, adapter plate polyamide GF black; adapter m. s. precision casting zinc plated; fixing material m.s. zinc plated

for door thickness 1.0 - 3.0

3000-U104-01

Adapter set for retrofitting

various cabinet types

on request

③ Note:

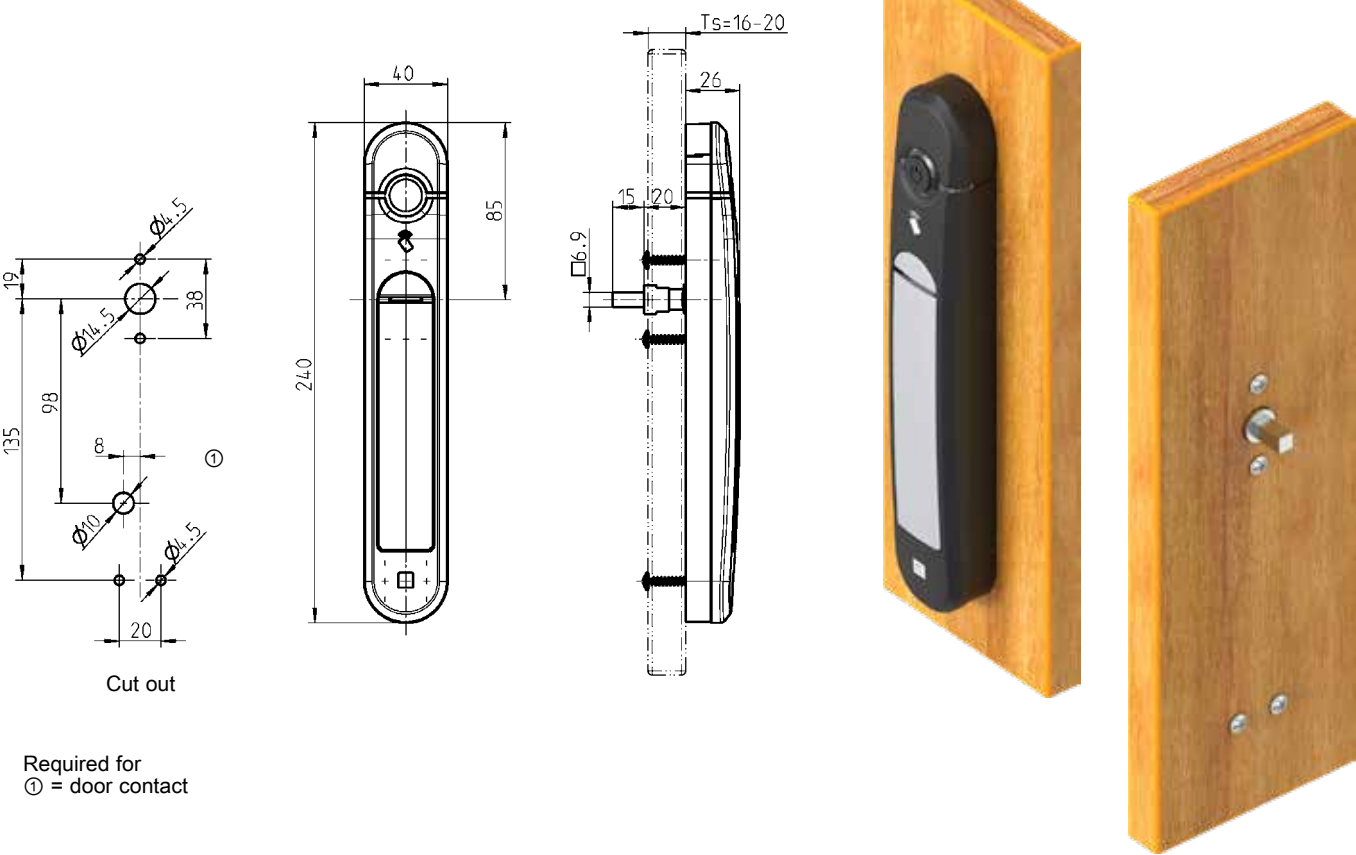
Wireless types for other countries on request

Further parts see page

– Access Unit Wireless	11A-220
– Door contact	11A-400
– rod control	3YA-120
	3YA-140
– Bearing bush	3YB-120
– Cam (GH=18)	1C-120

Swinghandle Agent E Wireless

Swinghandle for furniture doors



Required for
① = door contact

Swinghandle Agent E Wireless - functions

Tk = door contact

Mode of operation	Authentication	Power	Opening standard	Opening Optional	Connection option
Wireless	RFID card (125 kHz or 13.56 MHz)	Battery	immediately	--	Tk

max. 16 Access Units Wireless per Control Unit ÷ 1,200 handles Agent E Wireless

RFID

Agent E Wireless

Access Unit Wireless

Control Unit

Control Cockpit

© EMKA Beschlagteile GmbH & Co. KG • 2020 • www.emka-electronics.com

The Agent E Wireless is still the only swinghandle with wireless communication.

Due to its wireless and thus cost-saving mounting it is most suitable for retrofitting in data centres.

The authentication is done via RFID cards.

A highly-efficient power management guarantees a long battery life.



Features

- Wireless communication for data exchange via wireless network with Access Units Wireless (industrial standard according to national regulations)
- One Control Unit can actuate up to 1,200 handles Agent E Wireless using Access Units Wireless in one wireless network
- The authentication can be effected by RFID cards with 125 kHz or 13.56 MHz. Remote opening is always possible in addition
- Extremely energy-efficient battery operation (battery life min. 3 years)
- 4 eyes principle for authentication with 2 authorised RFID cards
- The handle has a connector for adding a door contact
- An emergency power function is possible with the integrated USB port
- Agent E Wireless is most suitable for retrofitting due to its wireless mounting
- The installation in furniture doors, in conjunction with different lock manufacturers, is solved with various adapters. On request



Swinghandle AGENT E consisting of:
 dish polyamide GF black;
 handle and shaft zinc-die powder-coated white aluminium;
 2 batteries;
 mounting and operating instructions

③ **WIRELESS type for all EU countries plus Switzerland and Norway**

for furniture doors

Wireless with RFID 125 kHz

on request

Wireless with RFID 13.56 MHz

3000-U911-48

RFID Card

125 kHz

3000-87

13.56 MHz

3000-88

Adapter AISI 303 for Agent E for furniture doors

for □ 7 mm, 15 mm long

3000-115

other adapter

on request

③ **Note:**

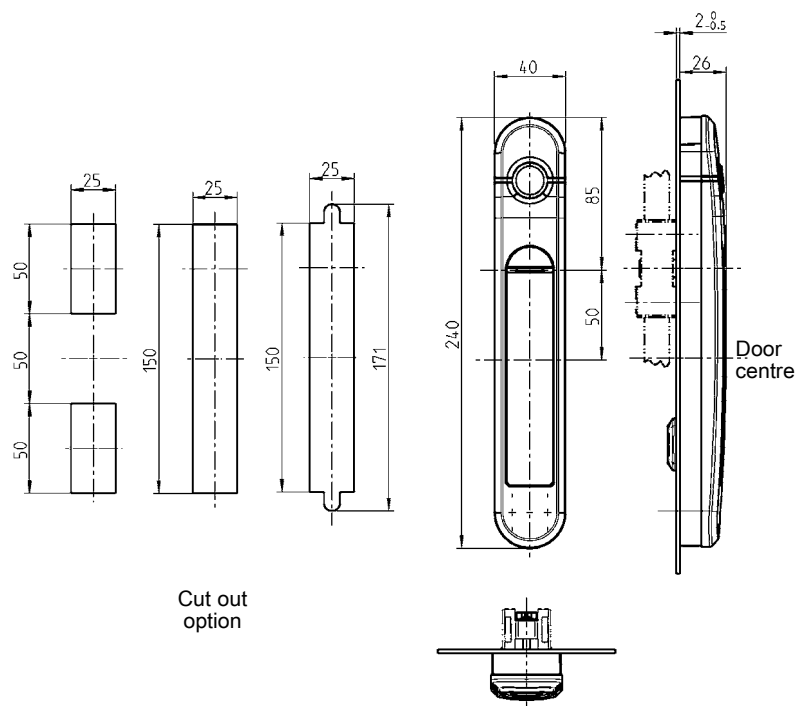
Wireless types for other countries on request

Further parts see page

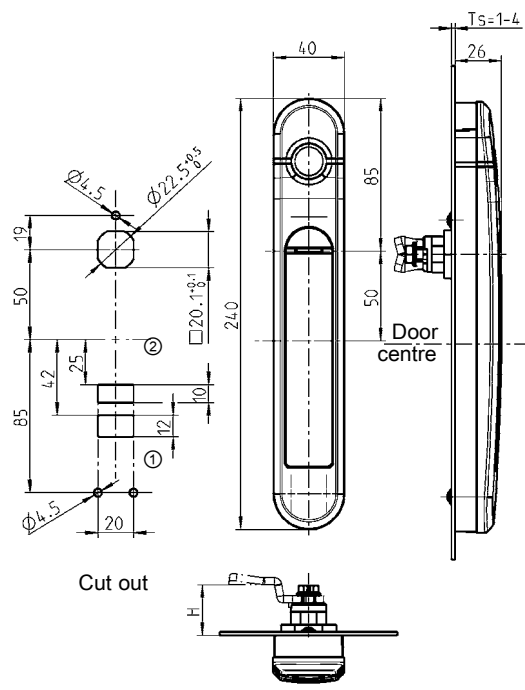
– Access Unit Wireless 11A-220
 – Door contact 11A-400

Swinghandle Agent E Wired

Swinghandle for rod control or bearing bush



Swinghandle for cam

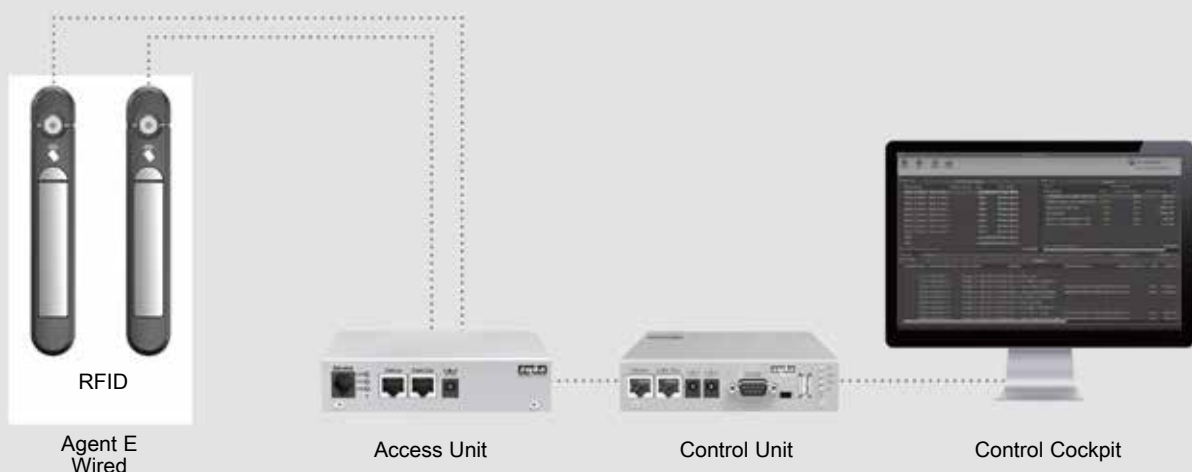


Swinghandle Agent E Wired - functions

Tk = door contact

Mode of operation	Authentication	Power	Opening standard	Opening optional	Connection option
Wired	RFID card (125 kHz or 13.56 MHz)	Cable	touch	--	Tk

max. 32 Access Units per Control Unit ≙ max. 64 handles Agent E Wired



Agent E wired is the cabled version of the electromechanical swinghandle program.
 It enables a central and complete logging of events.
 The authentication is done via RFID-cards.

Features

- Authentication by 125 kHz or 13.25 MHz RFID cards. Remote opening is always possible in addition
- Handle type Wired Slave does not have its own authentication and is released in combination with master handle, central keypad / central card reader or by remote opening. The opening is done by touching the sensor field
- 4 eyes principle for authentication with 2 authorised RFID cards
- The handle has a connector for adding a door contact
- In combination with the Access Unit the centre LED in the sensor field can be actuated in order to signal possible malfunctions in the rack such as increased temperature
- Two handles Agent E Wired can be connected to one Access Unit
- Max. 32 Access Units can be administered by one Control Unit
- An emergency opening is possible by using the integrated USB port
- The installation in cabinets / racks of different manufacturers is solved with various adapters.
On request



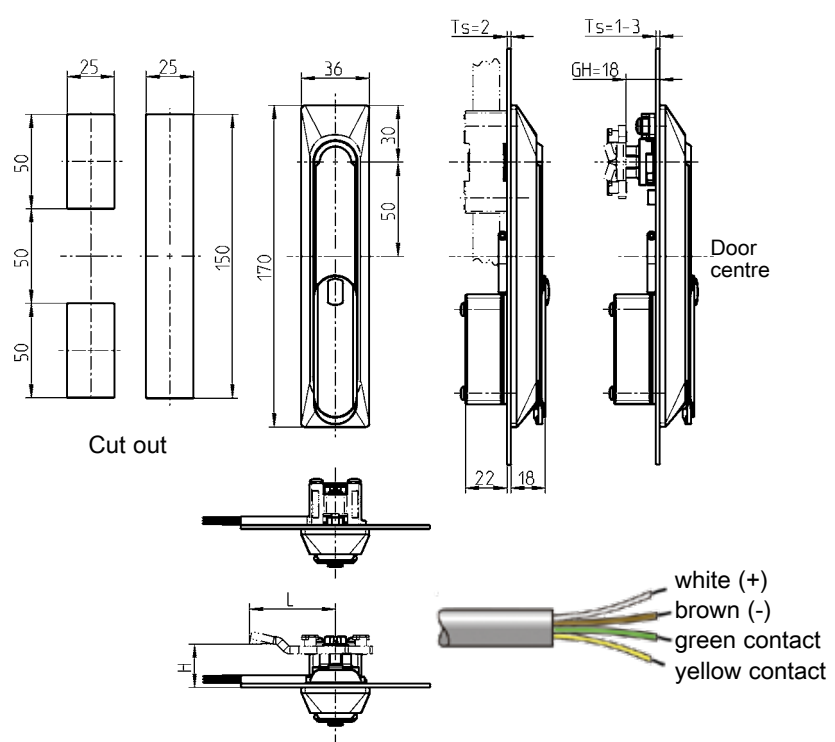
Swinghandle AGENT E consisting of:
 dish polyamide GF black;
 handle and shaft zinc-die powder-coated white aluminium;
 cable with RJ45 plug 4 m;
 mounting and operating instructions

	for rod control or bearing bush	for cam
Wired with RFID 125 kHz	on request	on request
Wired with RFID 13.56 MHz	3000-U900-41	3000-U900-42
Wired Slave	on request	on request
RFID Card		
125 kHz		3000-87
13.56 MHz		3000-88
Adapter set for bearing bush, adapter plate polyamide GF black; adapter m. s. precision casting zinc plated; fixing material m.s. zinc plated		
for door thickness 1.0 - 3.0		3000-U104-01
Adapter set for retrofitting		
various cabinet types		on request
USB adapter cable		
USB Standard-A on USB Micro-B		3000-U102

Further parts see page

– Access Unit	11A-230
– Door contact	11A-400
– Rod control	3YA-120
	3YA-140
– Bearing bush	3YB-120
– Cam (GH=18)	1C-120

Swinghandle 1150 with electromechanical release and emergency opening



Swinghandle 1150-U56-x / 1150-U58-x					Tk = door contact
Mode of operation	Authentication	Power	Opening standard	Opening Optional	Connection option
Wired	Central RFID card reader (125 kHz or 13.56 MHz)	by Locking Unit	release, actuate	Key	Tk; external
Wired	Central keypad	by Locking Unit	release, actuate	Key	Tk; external

per Control Unit max. 64 Locking Units \cong max. 512 handles or door contacts
Keypad / card reader with Access Unit optional



This handle is suitable for locking indoor cabinets.

The release is effected by applying a voltage signal of 12 V or 24 V DC. After pushing the handle briefly into the dish, it can be opened.

Features

- Integrated LED for signalling a released handle
- Potential-free reed contact for remote monitoring of handle status
- Emergency opening with key possible in case of power failure
- Dust cap will be destroyed in case of an emergency opening via key and needs to be replaced
- Connection option to Locking Unit 3000-U32-x or Access Unit 3000-U47-x connector plug optional



During release of handle the LED is illuminated.

cylinder cover



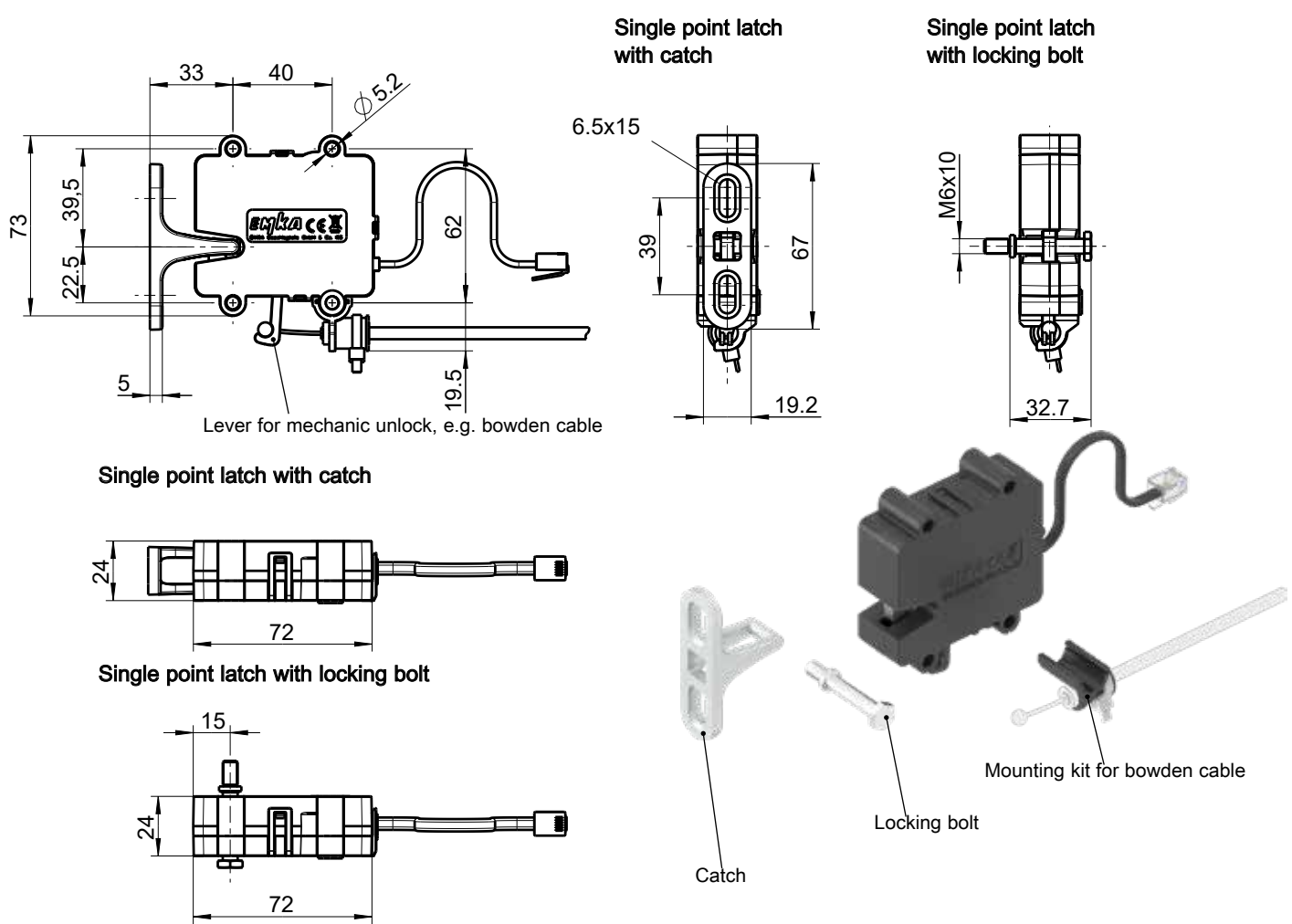
Handle zinc die black powder coated; dish and cap polyamide GF black; cylinder cover Bio-Flex black; shaft AISI 303, round cylinder with stainless steel cap and dust cap; solenoid with electronics; reed contact and LED; connecting cable (4 m); fixing material m.s. zinc plated. Each round cylinder has one silver steel key with polyamide grip GF black.
Contact switching power: 48 VDC, 0.5 A

	Keyed EK 333	Keyed different
Handle 12 V, for rod control or cam	1150-U56	1150-U56-V
Handle 24 V, for rod control or cam	1150-U56-01	1150-U56-01V
Cylinder cover Bio-Flex black (spare part)		
		1150-B33

Further parts see page

– Access Unit	11A-230
– Locking Unit	11A-240
– Cams (GH = 18)	3YC-120
– Rod control	3YA-110
	3YA-120
	3YA-140
– Spare key	12B-140

Single point latch with emergency opening



Single Point Latch 3000-U301-x			Tk = door contact		
Mode of operation	Authentication	Power	Opening standard	Opening Optional	Connection option
Wired	Central RFID card reader (125 kHz or 13.56 MHz)	by Locking Unit	immediately	Bowden cable	--
Wired	Central keypad	by Locking Unit	immediately	Bowden cable	--

per Control Unit max. 64 Locking Units ≙ max. 512 single point latches
Keypad / card reader with Access Unit optional



The single point latch is used in various applications as concealed lock.

The following types are available:

- Basic = latch is opened by switching on the power supply and locked as soon as the door is closed again
- Basic delayed Re-Lock = latch is opened by switching on the power supply and remains in the position 'open' as long as the power supply is applied
- Energy store = latch opens when switching off of the power supply (alternative to magnetic locks)
- Battery backup = latch is permanently powered and opened via electrical pulse; with UL508 approval, Ex approval to UL HazLoc; protection class IP 55

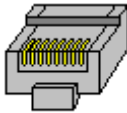


Features

- Wide supply voltage range from 9 ... 32 V
 - Potential-free switch for remote monitoring of latch status
 - Emergency opening via bowden cable in case of power failure
- Access Unit 3000-U47-x;
adapter cable optional
- UL508, Ex (UL HazLoc), IP 55 (only at version „Battery Backup“)

Connection possible to
Locking Unit 3000-U32-x or

Wiring information for

RJ45 plug front view	PIN	Basic Basic delayed Re-Lock Energy store	Battery backup	wire colours
 87654321	2	—	V -	white
	3	contact	V -	black
	4	V -	V -	red
	5	V +	Release +	green
	6	contact	Open collector output	yellow
	7	—	V +	blue

Single point latch with integrated status contact,
housing polyamide GF black;
ratch and pawl steel lubricant varnished;
cable 150 mm with RJ45 plug;
catch in zinc die (1 piece enclosed)
with mounting and operating instructions

Power supply: 9 ... 32 VDC, 100 mA
Contact switching power: max. 30 VDC, min. 1 mA, max. 100 mA

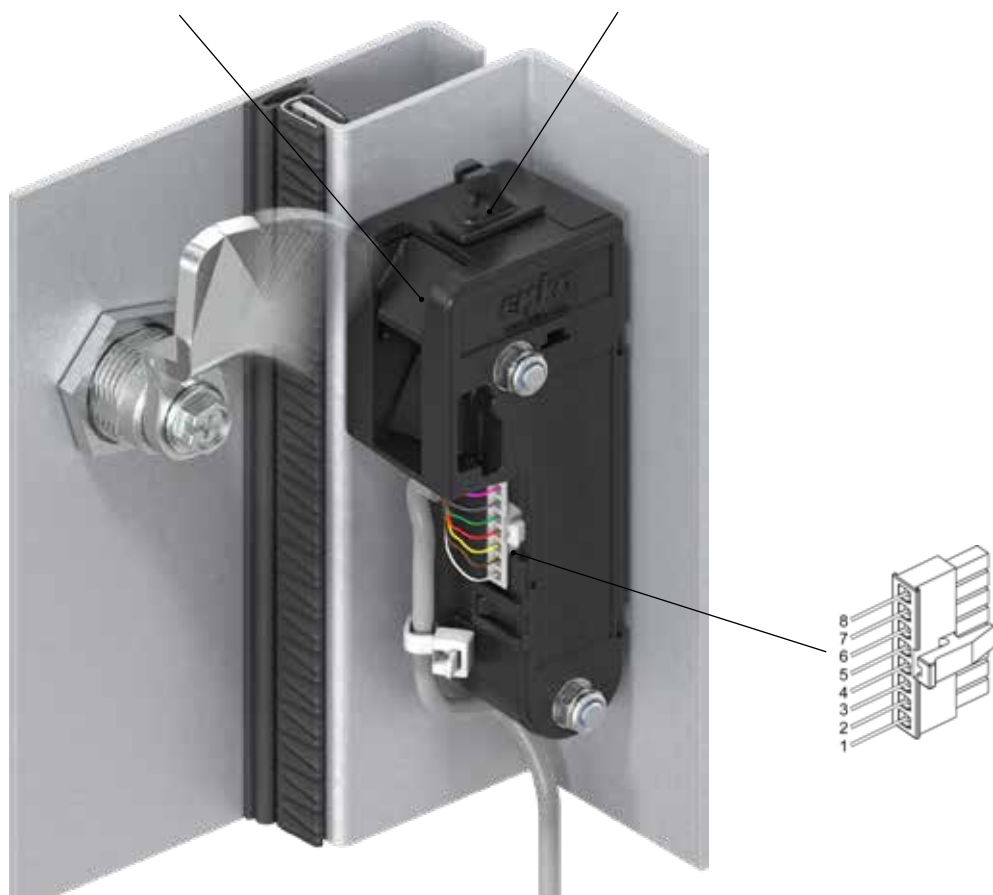
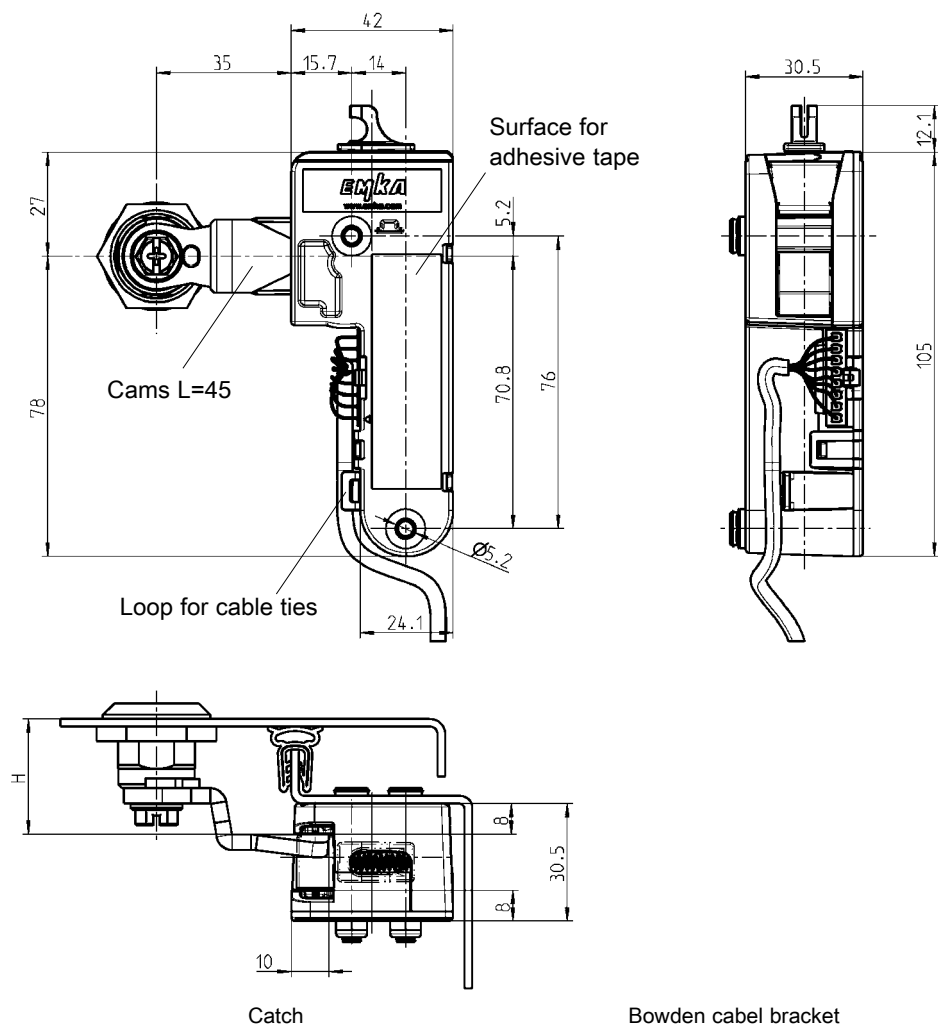
Basic	3000-U301-01
Basic delayed Re-Lock	3000-U301-02
Energy store; automatic unlock in case of power failure	3000-U301-03
Battery backup, UL508, Ex (UL HazLoc), IP 55	3000-U301-04
Catch material of your choice	
AISI 316	3000-78-PH
GD-Zn	3000-78-01KA
Striker bolt m.s. zinc plated	
	3000-102-JB
Mounting kit for bowden cable polyamide GF black; washer m.s. zinc plated and cable tie	
	3000-U303

On request:
– Mounting plate
– Bowden cable

Further parts see page
– Access Unit 11A-230
– Locking Unit 11A-240

eCam

Electromechanical cam lock



The electromechanical lock for cams is used as concealed lock in different applications.

The following types are available:

- Basic: lock for cam without status feedback, UL508 certified
- Basic Plus: lock for cam with status feedback, UL508 certified
Open collector output A1 indicates if cam is engaged in the catch
- Energy store: lock for cam with status feedback and automatic unlock of the catch in case of power failure, UL508 certified
Open collector output A1 indicates if cam is engaged in the catch
- Safety: Type approved as “position switch, design type 1” acc. to EN ISO 14119 (Machine Directive) and as “monitoring device with performance level d” acc. to EN ISO 13849

Features

- Wide supply voltage range from 9 ... 32 V
- Open collector output for remote monitoring of lock status

Emergency opening via bowden cable in

Wiring information for version

PIN	Basic	Basic Plus	Energy store	Safety
1	—	Output A1	Output A1	NC R1
2	—	—	—	NC R2
3	Control input	Control input	Control input	Control input
4	V -	V -	V -	V -
5	V +	V +	V +	V +
6	—	—	—	—
7	—	Door contact A1	Door contact A1	COM R2
8	—	Door contact A2	Door contact A2	COM R1

eCam

Housing, catch, cam disc, plunger polyamide GF;
magnet; gear motor; with springs; installation and operating manual
Power supply: 9 ... 32 VDC, max. 100 mA, stand-by 3 mA
Output signal: Open collector (max. 30 V, 50 mA)

Basic: lock for cam without status feedback	3000-U304-01
Basic Plus: lock for cam with status feedback	3000-U304-02
Energy store: lock for cam with status feedback	3000-U304-03
Safety: lock for cam with status feedback	3000-U304-04

Connection cable 2 m with connector and open wire ends

3000-111

Adhesive tape for quick assembly

2834

Mounting kit for bowden cable

on request

Further parts see page

- Power supply plug 11B-210
- further components please ask.

- Cam 1B-140
3YA-820
3YA-840
3YB-420
3YB-440
3YC-120
3YC-140

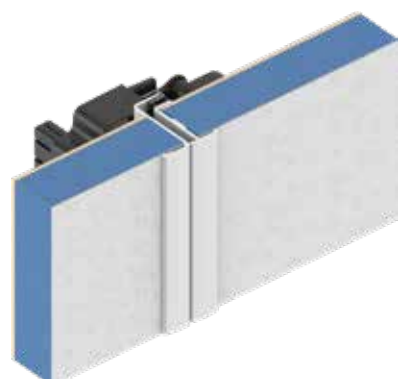
Fitting quarter turns, escutcheons or swinghandles can be found on the cam catalog pages



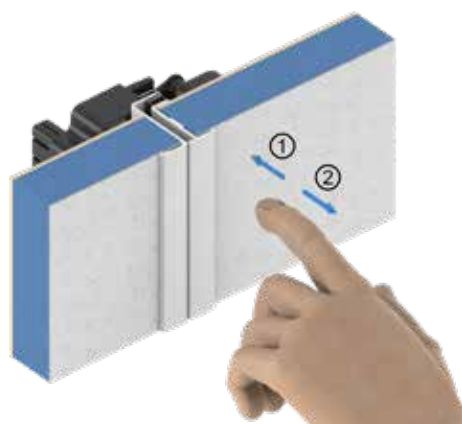
ePush-Lock

Electromechanical push locking system (Push-Push)

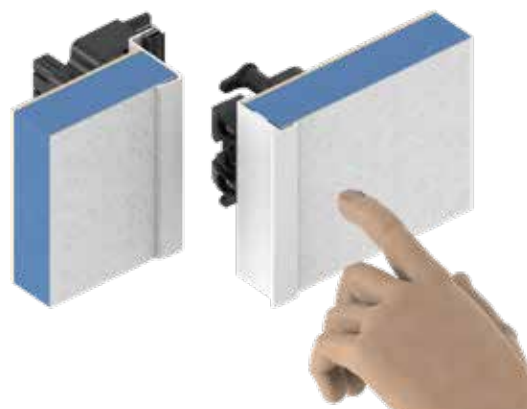
The electromechanical push lock ePush Lock is used as an invisible lock from the outside in different applications.



Locked and invisible from the outside

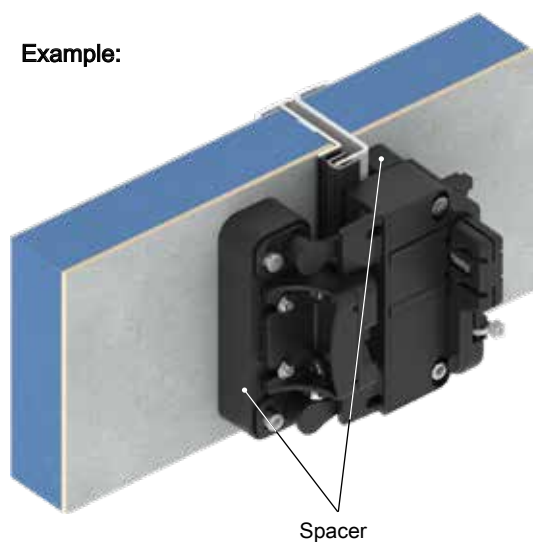


Open by pushing

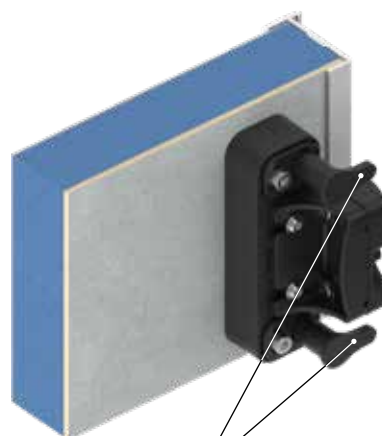


Close by pushing

Example:



Spacer



Ejector



Cable cover

Closed



Opening



Open

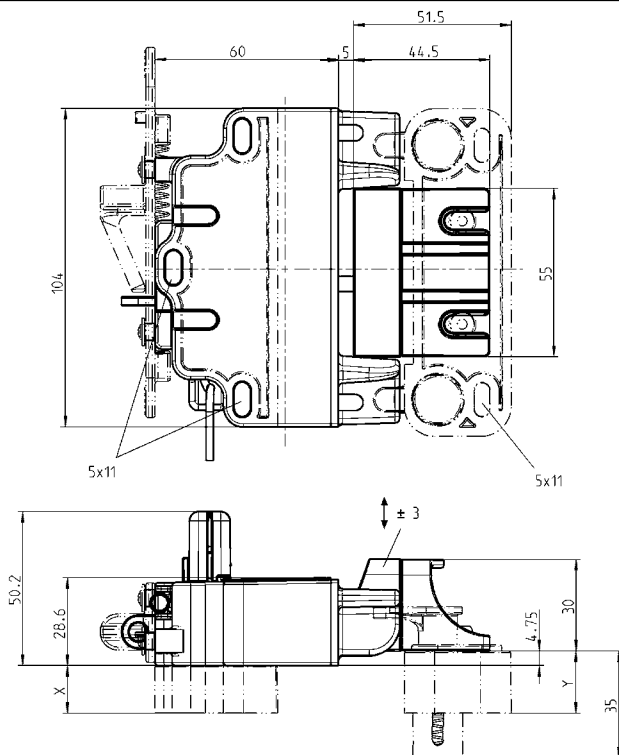


Closing



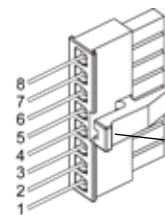
Closed





Features

- Wide supply voltage range from 9...32V DC, 200mA
- Digital output max. 26V, 30mA
- Open collector output for monitoring of lock status and door status
- Emergency opening possible via bowden cable in case of power failure



Wiring information for version (plug type: Micro MATE-N-LOK 1445022-8)

PIN	Button / Switch, central locking + permanent current (equal voltage level)	Central locking
1	Locking	Locking, channel 1
2	Unlocking	Unlocking, channel 1
3	—	—
4	V +	—
5	V -	V -
6	—	—
7	Lock status	Lock status
8	Door status	Door status

ePush-Lock

Housing, catch, cap and cam disc polyamide GF black; locking pin AISI 303; emergency opening slider polyamide GF red; spring AISI 301; screw ms.s zinc plated; mounting and operating instructions

Lock with emergency opening for central locking	3000-U600-01
Lock with emergency opening for switch / button	3000-U600-02
Lock with emergency opening for central locking and turn for emergency opening	3000-U600-03
Lock with emergency opening for switch / button and turn for emergency opening	3000-U600-04
Lock for manual operation	3000-U600-05

Ejector

Housing polyamide GF black; plunger POM black; spring AISI 301

3000-U600

Cable cover polyamide GF black

3000-112-10

Spacer for lock housing and catch polyamide GF black

Dimension X and Y by choice of customer; X = 13 - 32.25 ; Y = 4.75 - 40

on request

Connection cable 2 m with connector and open wire ends

3000-111

Emergency opening

Turn for emergency opening

Note:

Mirror image version of catch, lock housing and turn for emergency opening on request

Further parts see page

— power supply plug 11B-210
— further components please ask.

Standards

- Test according to RC2 DIN EN 1630
- Rating IK 10 following DIN EN 50102
- Integrated scratch protection prevents surface damage (handle / dish)

Features

- Zinc die type fulfills the requirements of resistance level RC2 (protection against vandalism) according to DIN EN 1630
- tested and approved by Deutsche Telekom
- great flexibility regarding cost / benefit due to the big variety of types

OUTDOOR



Swing handle 'long' or 'short' dish and handle zinc die, surface on request
shaft brass;
cylinder cover polyamide black or grey (RAL 7038);
cap zinc die black powder coated;
adapter plate polyamide GF black for cut out version A;
blind plug polyamide GF black (loose), spring, data sheet and assembling instruction included in the electromechanical version;
fixing m.s. zinc plated; with seal

Swinghandle 'long' (189.5) GD-Zn black powder coated

electromechanical version optional for 40 and 45 mm profile half cylinder	1317-U161-02
--	--------------

Swinghandle 'long' (189.5) GD-Zn grey powder coated (RAL 7038) and anti-graffiti coated

electromechanical version optional for 40 and 45 mm profile half cylinder	1317-U161-02HJ
--	----------------

Swinghandle 'short' (164.5) GD-Zn black powder coated

electromechanical version optional for 40 and 45 mm profile half cylinder	1317-U151-02
--	--------------

Swinghandle 'short' (164.5) GD-Zn grey powder coated (RAL 7038) and anti-graffiti coated

electromechanical version optional for 40 and 45 mm profile half cylinder	1317-U151-02HJ
--	----------------

Building key polyamide black

1004-44-01AA

Note:
The electromechanical version is also available in 12 V DC on request.

Further parts see page

– Cam	3YC-120
– 3-point cam	3YC-180
– ** Profile half cylinder	3XB-120

Swinghandle 1154 with electromechanical release and emergency opening



This handle is suitable for locking outdoor cabinets.
 By applying a 12 V, 24 V or 48 V DC signal, the handle can be released. After pushing the handle briefly into the dish, it can be opened.
 The integrated reed contact is for monitoring the handle status remotely. To lock the handle it must be pressed into the dish until the closing mechanism engages. The key provided is used to open the handle in case of power failure. To open the cylinder cover the screw M3 has to be removed. Then it is possible to unlock by means of round / pin cylinder.

OUTDOOR

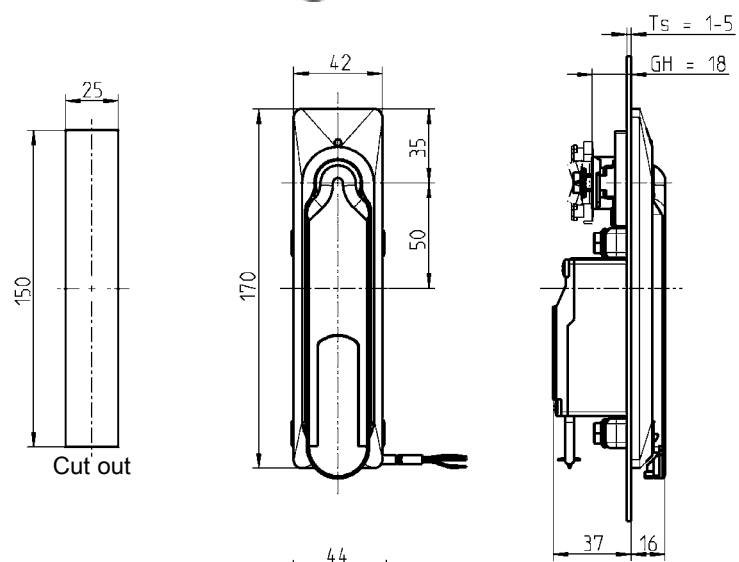
Round cylinder EK



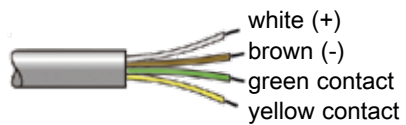
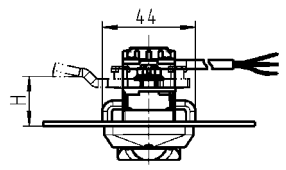
During release of handle the LED is illuminated.



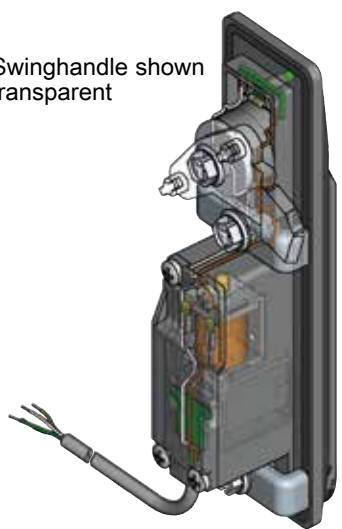
max. power-on time: 1 minute



H-dimension starting at 33 mm



Swinghandle shown transparent



Swinghandle zinc die black powder coated, cap and dust cap polyamide GF black, shaft zinc die zinc plated, holder AISI 304, round cylinder EK with stainless steel cap and shutter, solenoid with electronics, reed contact and LED, cable (4 m), screw M3 for cylinder cover AISI 304, fixing material m.s. zinc plated, with seal.
 Each cylinder EK with one key silver steel with grip polyamide GF black
 Contact switching power: 48 VDC, 0.5 A

Further parts see page
 – Cam (stroke 26) 3YC-120
 H-dimension as of 33 mm on request
 – Connecting rod
 – Spare key EK 12B-140

	keyed EK 333	Keyed different
Round cylinder EK ; 48V	1154-U6	1154-U6-V
Round cylinder EK ; 24V	1154-U6-02	1154-U6-02V
Round cylinder EK ; 12V	1154-U6-03	1154-U6-03V

Notes:

1 Locks

2 Units

3 Sensors

4 Accessories

5 Software

Index

System for access control and rack monitoring

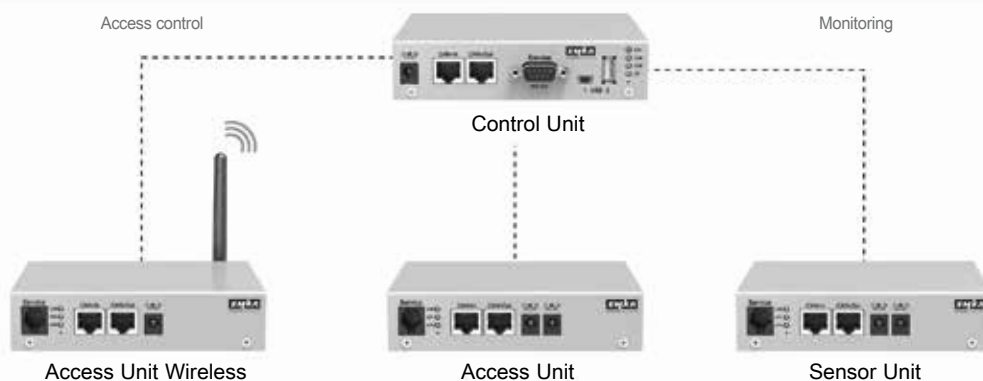
The Rack Management System by EMKA Electronics consists of the central Control Unit and the connected components for access control and rack monitoring. Due to its modular structure it is scalable for any application: from a single cabinet in stand-alone operation up to centrally administered server racks in data centres.



Control Cockpit

Access control

Monitoring



RFID

Agent E Wireless



RFID

Agent E Wired



Sensor

19" Rack

19" plug-in box RMS 490

- The EMKA 19" rack includes several function units in one compact housing:
- one Control Unit
- one Locking Unit for eight locks or door contacts
- one Sensor Unit for four sensors
- optionally one Access Unit
- optionally one GSM Unit
- To control the temperature there are two continuous control outputs available which control the speed of fans or the output of the airconditioning unit following different control strategies.
- The two-line display can be configured according to customer specifications
- All components can be connected quickly by plugs
- Using the CAN bus the functionality can be enhanced by further units almost infinitely



Power supply:	85 ... 264 VAC, 47 ... 63 Hz
Handle / lock inputs:	8 (12 V, max 1 A)
Sensor inputs:	4 (with sensor feed)
Relay outputs:	4 (30 VDC, max. 1.0 A; 48 VAC, max. 0.5 A)
Control outputs:	2 (max. 10 VDC, 1 mA)
Interfaces:	serial RS 232C and USB interface (front)
network interface:	Ethernet, 100 Mbit, RJ45 (back)
Communication protocols:	SNMP 1.0 and 2c, http
CAN bus ports:	3, for external modules
Operating temperature:	+5 ... +50° C
Dimensions (L x W x H):	210 x 481 x 43.5 (1 HE) mm
Scope of supply:	2 terminating resistors; power cord

on request

Further parts see page
– EMKA Control Cockpit 11A-510

Control Unit; Access Unit Wireless

Control Unit

- Central Control Unit of the EMKA Rack Management System for wired and wireless systems
- Configuration and operation of all connected Units is effected by the network interface using a standard webbrowser or the software EMKA Control Cockpit
- Fail-safe and tamper-proof logging of all events in the system with real-time clock and additional memory
- Time synchronisation via NTP server
- Two ports for different alarm states on the back of the housing
- Simple integration into higher level management systems via SNMP protocol
- Redundant power supply possible



Power supply:	12 ... 24 VDC, 325 mA
Relay outputs:	2 (30 VDC, max. 1.0 A; 48 VAC, max. 0.5 A)
Interfaces:	serial RS 232C interface (front)
network interface:	Ethernet, 100 Mbit, RJ45 (back)
Communication protocols:	SNMP 1.0 and 2c
CAN bus ports:	2
Operating temperature:	+5 ... +45° C
Dimensions (L x W x H):	123 x 140 x 33 mm
Scope of supply:	2 terminating resistors, assembly bracket

3000-U141-02

Further parts see page

– Access Unit Wireless	11A-220
– Locking Unit	11A-240
– Sensor Unit	11A-250
– EMKA Control Cockpit	11A-510
– Power supply	11A-400

Access Unit Wireless

- In combination with a Control Unit Wireless up to 1,200 Agent E Wireless handles can be administered under one IP address with one Access Unit Wireless.
- To improve the range of the wireless signal max. 15 further Access Units Wireless can be connected to the Access Unit Wireless
- Frequency 868 MHz (Europe) or 922 MHz (US, Singapore)



Power supply:	12 ... 24 VDC, 200 mA
RS 485 ports:	2 for connecting further Access Units Wireless
CAN bus ports:	2
Operating temperature:	+5 ... +45° C
Dimensions (L x W x H):	126 x 135 x 33 mm
Scope of supply:	Assembly bracket

Access Unit Wireless Europe

3000-U980-02

other regions

on request

Further parts see page

– AGENT E Wireless	11A-110
– Control Unit	11A-210
– Power supply	11A-400

Access unit for 2 handles and / or card readers HID

- Direct connection of 2 swinghandles of the line Agent E Wired
- Actuation of the central LED in the handle via terminal block on the back
- Alternative connection of 2 electromechanical locks and 2 external card readers
- Max. 32 Access Units per Control Unit:
- Administration of up to 64 handles under one IP address



Power supply:	12 ... 24 VDC, 200 mA + outputs
Handle outputs:	2 (RJ45), max. 12 V / 1,000 mA, or max. 24 V / 500 mA per output
Ports for card reader:	2 (RJ45), HID
Relay outputs:	2 (max. 10 VDC, 1 mA)
CAN bus ports:	2
Operating temperature:	+5 ... +45° C
Dimensions (L x W x H):	107 x 135 x 33 mm
Scope of supply:	Assembly bracket

Access Unit HID for installation in RMS 490	3000-U47-01
---	-------------

Access Unit HID in metal housing	3000-U47-02
----------------------------------	-------------

RFID Card

125 kHz	3000-87
---------	---------

13.56 MHz	3000-88
-----------	---------

Note:
The handle outputs are not available in case of the versions for mounting in RMS 490.

Further parts see page

– Card reader	11A-260
– Power supply	11A-400

Access Unit for 2 handles and / or card readers Legic®

- Direct connection of 2 swinghandles of the line Agent E Wired
- Actuation of the central LED in the handle via terminal block on the back
- Alternative connection of 2 electromechanical locks and 2 external card readers
- Max. 32 Access Units per Control Unit:
- Administration of up to 64 handles under one IP address



Power supply:	12 ... 24 VDC, 200 mA + outputs
Handle outputs:	2 (RJ45), max. 12 V / 1,000 mA, or max. 24 V / 500 mA per output
Port for card reader:	1 (round connector) Legic®
CAN bus ports:	2
Operating temperature:	+5 ... +45° C
Dimensions (L x W x H):	107 x 135 x 33 mm
Scope of supply:	Reader antenna with two RFID cards; assembly bracket

Access Unit Legic® for installation in RMS 490	3000-U47-07
--	-------------

Access Unit Legic® for metal housing	3000-U47-08
--------------------------------------	-------------

RFID Card

Legic®	1417
--------	------



Note:
The handle outputs are not available in case of the versions for mounting in RMS 490.

Further parts see page

– Power supply	11A-400
----------------	---------

Locking unit for 8 releasable handles and single point latches

- This unit can actuate up to 8 single point locking systems or handles of the program 1150 and read 8 status contacts
- It is possible to activate several locks simultaneously. In this case it is recommended to connect a power-supply unit to each Locking Unit
- The opening signal for the respective lock is triggered by keypad, RFID card or management software - EMKA Control Cockpit
- Using the existing inputs the states (open/closed) of locking systems, doors and side walls can be evaluated
- For supplying the locking systems with 24 V operating voltage a suitable power-supply unit can be connected in addition at the input 'ext. DC'



Power supply:	12 VDC, 140 mA + outputs
Handle outputs:	8, max. 12 V / 1.000 mA, or max. 24 V / 500 mA per output
Maximum current:	2,000 mA
CAN bus ports:	2
Operating temperature:	+5 ... +45° C
Dimensions (L x W x H):	235 x 135 x 33 mm
Scope of supply:	Assembly bracket

Further parts see page

– Swinghandle 1150	11A-130
– Single-point latch	11A-140
– Control Unit	11A-210
– Door contact	11A-400
– Power supply	11A-400

3000-U32-02

Sensor Unit

- Capturing and analysing of different measurements such as temperature, humidity, smoke or electrical parameters
- Connection of max. 4 sensors
- Switching of max. 4 alarm relay outputs (e. g. switching on or off of fans) depending on the set limits



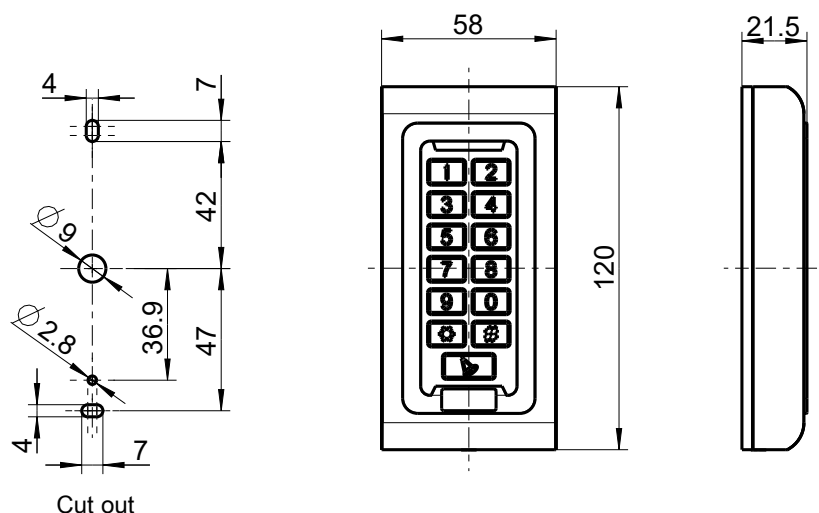
Power supply:	12 VDC, 200 mA
Sensor inputs:	4 (with sensor feed)
Relay outputs:	4 (30 VDC, max. 1.0 A; 48 VAC, max. 0.5 A)
CAN bus ports:	2
Operating temperature:	+5 ... +45° C
Dimensions (L x W x H):	235 x 135 x 33 mm
Scope of supply:	Assembly bracket

Further parts see page

– Control Unit	11A-210
– Sensors	11A-310
	to 11A-330
– Power supply	11A-400

3000-U13-02

- The card reader is designed for connection to existing access control systems and is suitable for indoor and outdoor use
- RFID cards in Mifare Classic format can be read and the data can be transferred with the integrated Wiegand 26 bit interface
- The card reader can be connected as a reader unit to the Access Unit 3000-U47-02. An adapter is required for the electrical connection, which is not included in the scope of delivery.
- The integrated keyboard cannot be used because the Wiegand interface cannot process keyboard inputs



Power supply:	12 ... 24 VDC, <60 mA, standby <30 mA
Output:	Wiegand 26
Protection Class:	IP 68
Operating temperature:	-45 ... +60° C
Air humidity:	10...90 % r.h. (non-condensing)
Dimensions (L x W x H):	120 x 58 x 21.5 mm
Scope of supply:	Connection cable 250 mm with open wire ends

3000-U45-05

Further parts see page

- Access Unit (3000-U47-02)	11A-230
- RFID card (3000-88)	11A-410

Card reader for wall / door mounting

- The card reader is connected to the Access Unit 3000-U47-01 or 3000-U47-02 as an external reader and can read various contactless cards on the basis of HID and other card technologies
- The reader has terminals and is connected to the Access Unit using a 4-core cable. The maximum cable length between the Unit and reader amounts to 10 m



Power supply:	5 ... 16 VDC, 45 mA 75 mA during the reading process
Port	Screw terminals
Operating temperature:	+5 ... +45° C
Dimensions (L x W x H):	235 x 135 x 33 mm
Scope of supply:	Fixing frame for wall or door mounting

on request

RFID Card

125 kHz	3000-87
13.56 MHz	3000-88

Keypad

- The keypad in combination with a Locking Unit is used for locally opening selected locks by entering a PIN code
- In combination with the Access Unit the lock number is entered via the keypad while the RFID card receives the authentication
- Alternatively a two-factor authentication for opening a lock is possible in this constellation (personal PIN code + RFID card)



Power supply:	12 VDC, 50 mA
CAN bus ports:	2
Operating temperature:	+5 ... +45° C
Dimensions (L x W x H):	113 x 64 x 12 mm
Scope of supply:	Connection cable 3 m RJ11

3000-U08-01

Locking System Unit with Reed Contact Switch

- This set is activated via a Locking Unit 3000-U11-XX
- This set is used for opening spring-loaded handles. It is used instead of a mechanical push button or locking cylinder set



Lock system component with reed contact PC+ABS-FR(40) black; solenoid; electronics; fixing material m.s. zinc plated

Control:	via Lock Unit 3000-U11-XX
Contact switching power:	max. 48 VDC, 0.5 A
Scope of supply:	Connection cable 3 m

Connection cable with open cable ends	on request
---------------------------------------	------------

Connection cable with plug for Locking Unit 3000-U11-02	on request
---	------------

Further parts see page

– Swinghandle 1151	3C-420
– Swinghandle 1180	3E-320
– Swinghandle 1185	3E-520
– Locking Unit	11A-240

Process stability in operation by monitoring the operating states

By means of specific sensors by EMKA Electronics a wide range of different parameters is monitored in the server racks. The measured values are captured centrally and evaluated. When limit values are exceeded, they can trigger alarms, switch on fans or air-conditioning units or effect emergency openings of the rack doors.

In combination with the software EMKA Control Cockpit, the data provide a basis for increasing the energy efficiency of data centres.

The sensor program of EMKA Electronics includes all relevant parameters for measuring and monitoring the operating status of server racks.

Danger

Smoke detector and vandalism sensor for signalling immediate danger

Power

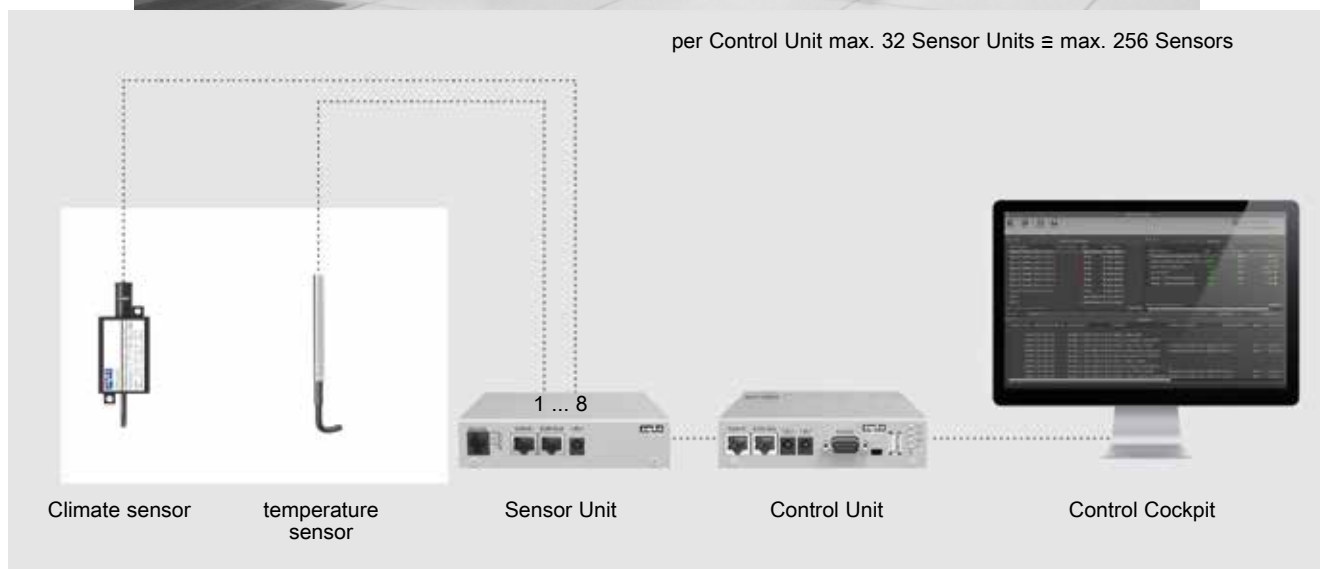
Sensors for electrical parameters (current, voltage, power) for measuring and optimising the power consumption

HVACR

Temperature, humidity and leakage sensor for climatic parameters



per Control Unit max. 32 Sensor Units ≙ max. 256 Sensors



Climatic sensor - temperature and humidity

- The analog climate sensor measures both, air humidity and the ambient temperature
- The sensor is connected to the Sensor Unit 3000-U13-0X and occupies two inputs of this unit

Operating voltage:	7.5 ... 27 VDC (provided by the system)
Current consumption:	approx. 0.8 mA
Measuring range humidity:	0...100 % relative humidity
Deviation:	± 3.5 % (20...80 % relative humidity)
Response time:	< 4 sec.
Output humidity:	0.5 ... 5.5 V
Measuring element:	capacitive (non-condensing)
Measuring range temperature:	-20 ... +80° C
Deviation:	± 0.5 K at 25° C
Response time:	< 20 sec
Output temperature:	0.5 ... 5.5 V
Measuring element:	Semiconductor
Dimensions L x W x H:	65 x 31 x 22 mm
Cable length:	2 m

Plastic housing with two fixing bore holes

connection cable with open cable ends for modules of type Kit	3000-U25-00
Connection cable with plug for Sensor Unit 3000-U13-02 and 19" rack RMS 490	3000-U25-01



Further parts see page
– Sensor Unit

11A-250

Temperature sensor

- The sensor is suitable for monitoring temperatures of both gaseous and liquid media
- The sensor is connected to the Sensor Unit 3000-U13-0X

Operating voltage:	+12 V ±10 % (provided by the system)
Current consumption:	approx. 0.8 mA
Measuring range temperature:	-50 ...150 °C
Deviation:	< 2 %
Output voltage at -50° C:	0.25 V
Output voltage at 150° C:	4.75 V
Dimensions diameter x L:	Ø 6 mm x 50 mm
Cable length:	2 m

Housing stainless steel

connection cable with open cable ends for modules of type Kit	3000-U39-00
Connection cable with plug for Sensor Unit 3000-U13-02 and 19" rack RMS 490	3000-U39-01



Further parts see page
– Sensor Unit

11A-250

Acceleration sensor

- This sensor is suitable in safety-relevant applications to protect against vandalism, destruction and theft. It measures the accelerations in one axis
- The sensor is connected to the Sensor Unit 3000-U13-0X



Operating voltage:	7.5 ... 15 VDC (provided by the system)
Current consumption:	ca. 2 mA
Measuring axis:	Z-axis
Measuring range:	± 5 g
Output voltage at 0 g:	2.5V ± 0.25V
Sensitiveness:	0.4 ± 0.02) V/g
Non-linearity:	±1.0 % FSO
Band width:	50 Hz
Protection against overload:	up to 1,500 g
Measuring element:	capacitive
Operating temperature:	−40 ... +70° C
Dimensions L x W x H:	65 x 31 x 22 mm
Cable length:	2 m
IP rating:	IP 65
EMC and ESD tested acc. to	EN 50082-1 EN 50082-2

Plastic housing with two fixing bore holes

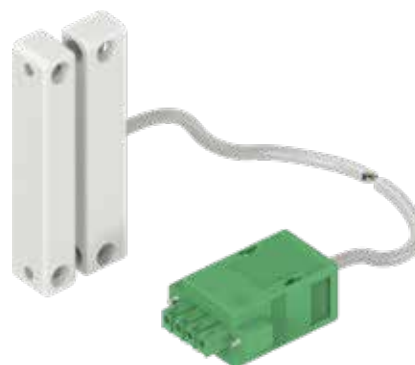
connection cable with open cable ends for modules of type Kit	on request
Connection cable with plug for Sensor Unit 3000-U13-02 and 19" rack RMS 490	on request

Further parts see page
– Sensor Unit

11A-250

Door contact with connection cable

- This sensor is used to monitor the status of a door or side panel
- It is designed for the connection to the Units 3000-U11-02 and 3000-U32-02



Dimensions L x W x H: 60 x 11 x 9 mm

Cable length: 6 m

Plastic housing with two fixing bore holes;
loose side with permanent magnet

Connection cable with open cable ends for module type Kit	3000-U35-00
Connection cable with plug for Sensor Unit 3000-U13-02 and 19" rack RMS 490	3000-U35-01
Connection cable with connector for Agent E, cable length 2 m	on request

Door contact with screw connectors

- This sensor is used to monitor the status of a door or side panel
- Use cable 2807 to connect to Agent E swing handles
- Suitable for connection cables up to 1.5 mm²



Dimensions L x W x H: 50 x 9.5 x 7 mm

Plastic housing with two fixing bore holes and special adhesive tape

Door contact with screw connectors	3000-U35-05
Connection cable with connector for Agent E, cable length 2 m	2807

Power supply plug



Power supply plug, stabilised with Euro plug (Schuko), housing made of plastic black
Output: 12 VDC 2,000 mA stabilised

Connection cable with open cable ends for modular system kit	3000-03-00
Connection cable with plug for all Units	3000-03-02

RFID Card



125 kHz



13,56 MHz

- Further parts see page
- AGENT E Wireless 11A-110
 - AGENT E Wired 11A-120
 - Access Unit HiD 11A-230
 - Card reader HID 11A-260
 - Agent E RFID Stand-Alone 11B-110

ISO 7816 ID-1		
125 kHz		3000-87
13,56 MHz		3000-88

RFID Card

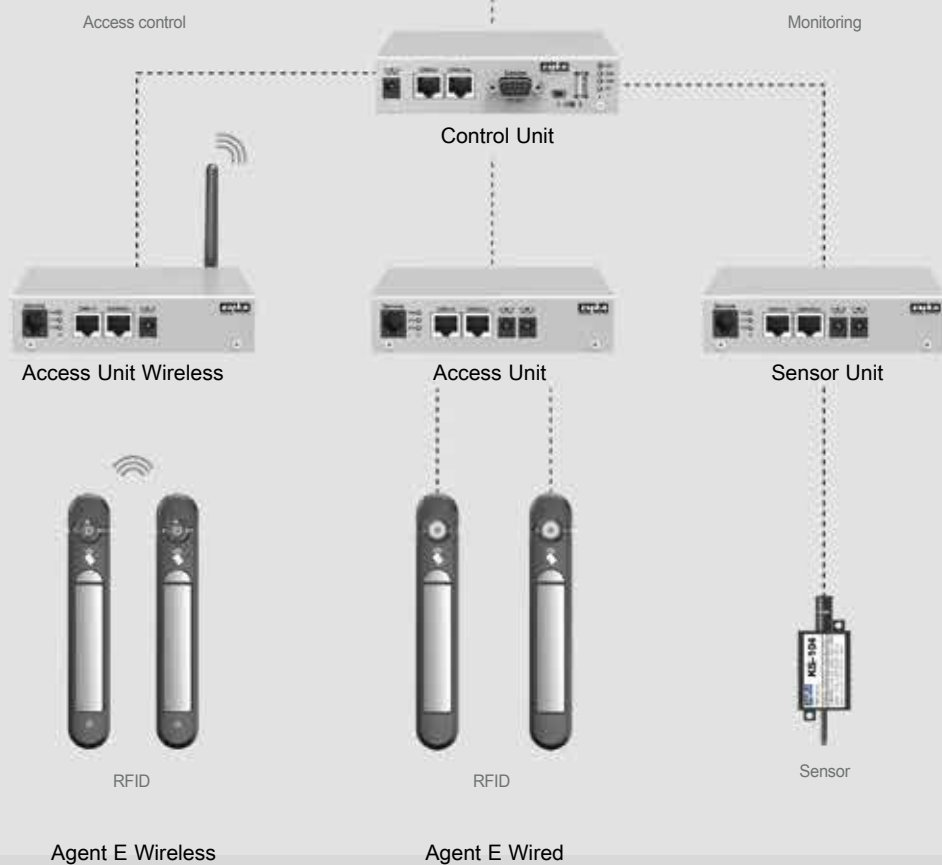


- Further parts see page
- Access Unit Legic® 11A-230

ISO 7816 ID-1		
Legic®		1417



Control Cockpit



The databased software EMKA Control Cockpit administers the access authorisations. It logs and documents all accesses to server racks. Measured variables of sensors are continuously captured and monitored with respect to limit violations.

The integration in superordinate systems is effected via an SQL interface.

Larger IT systems are often controlled by several different rack management systems. This might be necessary due to the great number of server racks or the distribution across several rooms or locations.

Such systems are often linked to higher-level control or management systems. This covers central operation, control and configuration of critical importance.

Features

User administration

- Easy addition of users and assignment of user groups
- Individual allocation of authorisations and personal PIN codes

System administration

- Administration of up to 50 rack management systems with the connected components such as handles, sensors or card readers
- Basic functions:
 - Reading of RFID cards
 - Rights management for RFID cards with discretionary assignment
 - Access rights management for locks
 - Allocation of rack groups
 - Setting of limit values for sensors and activation of alarms

Real-time features

- Convenient opening of handles after entering a PIN code
- Comprehensive control and monitoring functions
- Display of alarm states of handles or sensors by colour change
- Comprehensive filter functions for displaying the most important information

Configurable screen views

- Individual design of the screen views in different windows

Measured value storage

- Monitoring and logging of temperature values to identify the thermal strain
- Graphic trend display of the measurements of historical or life data in user-definable time slots
- Simple storage or print out of the diagrams using the export function

Logging and analysis

- Archiving of events of all connected systems in one common database
- Creation of customer-specific reports with comprehensive filter and export functions

Remote access

- Installation of the client software in any number of places
- Access to central database as client
- Encrypted data transfer within the network

Integration into external systems

- Open database structure enables the simple integration in superordinate systems via SQL interface



EMKA Control Cockpit

Basic package for 2 systems	3000-U68
Extension for 1 further system	3000-U68-101
Extension for 10 further systems	3000-U68-102
Extension for 20 further systems	3000-U68-103
Extension for 48 further systems	3000-U68-104

Further parts see page
– Control Unit

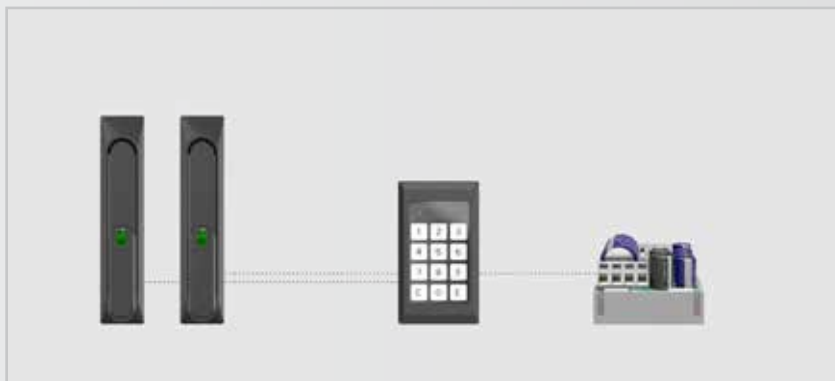
11A-210

Article No.	catalogue page	Article No.	catalogue page	Article No.	catalogue page	Article No.	catalogue page
Chapter 11A		3000-87	11A-410	3000-U301-02	11A-140		
1417	11A-230	3000-88	11A-110	3000-U301-03	11A-140		
1417	11A-410	3000-88	11A-115	3000-U301-04	11A-140		
		3000-88	11A-120	3000-U303	11A-140		
2807	11A-400	3000-88	11A-230	3000-U304-01	11A-144		
2834	11A-144	3000-88	11A-260	3000-U304-02	11A-144		
		3000-88	11A-410	3000-U304-03	11A-144		
1004-44-01AA	11A-150	3000-102-JB	11A-140	3000-U304-04	11A-144		
		3000-111	11A-144	3000-U600	11A-146		
1150-B33	11A-130	3000-111	11A-146	3000-U600-01	11A-146		
		3000-112-10	11A-146	3000-U600-02	11A-146		
		3000-115	11A-115	3000-U600-03	11A-146		
1150-U56	11A-130			3000-U600-04	11A-146		
1150-U56-01	11A-130	3000-U08-01	11A-260	3000-U600-05	11A-146		
1150-U56-V	11A-130	3000-U13-02	11A-240	3000-U900-41	11A-120		
1150-U56-01V	11A-130	3000-U25-00	11A-310	3000-U900-42	11A-120		
		3000-U25-01	11A-310	3000-U911-41	11A-110		
1154-U6	11A-160	3000-U32-02	11A-240	3000-U911-42	11A-110		
1154-U6-02	11A-160	3000-U35-00	11A-400	3000-U911-48	11A-115		
1154-U6-03	11A-160	3000-U35-01	11A-400	3000-U980-02	11A-220		
1154-U6-V	11A-160	3000-U35-05	11A-400				
1154-U6-02V	11A-160	3000-U45-05	11A-250				
1154-U6-03V	11A-160	3000-U39-00	11A-310				
		3000-U39-01	11A-310				
1317-U151-02	11A-150	3000-U47-01	11A-230				
1317-U151-02HJ	11A-150	3000-U47-02	11A-230				
1317-U161-02	11A-150	3000-U47-07	11A-230				
1317-U161-02HJ	11A-150	3000-U47-08	11A-230				
		3000-U68	11A-510				
3000-03-00	11A-400	3000-U68-101	11A-510				
3000-03-02	11A-400	3000-U68-102	11A-510				
3000-78-PH	11A-140	3000-U68-103	11A-510				
3000-78-01KA	11A-140	3000-U68-104	11A-510				
3000-87	11A-110	3000-U102	11A-120				
3000-87	11A-115	3000-U104-01	11A-110				
3000-87	11A-120	3000-U104-01	11A-120				
3000-87	11A-230	3000-U141-02	11A-220				
3000-87	11A-260	3000-U301-01	11A-140				

Notes:

Electronic Locking & Monitoring Systems

Stand-alone solutions



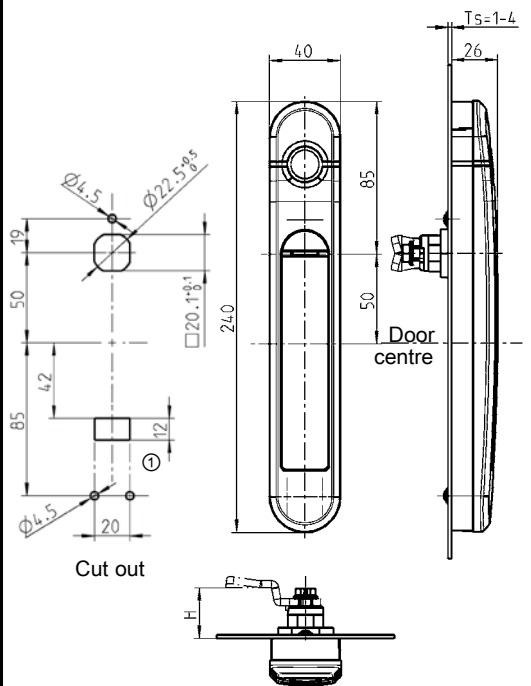
Stand-alone systems are electronic locks with their own intelligence for accessing up to two electromechanical locks.

They are suitable for access control for individual racks not requiring central monitoring.

Depending on the chosen lock the opening is either effected by RFID cards or by entering a PIN code on a keypad.

Systems with RFID cards are specially easy to install as no further wiring in the rack is required.

1 Stand-alone



Required for
① = door contact

2 Accessories

Agent E RFID Stand-alone

This version consist of a battery-operated AGENT E handle with integrated card reader for 125 kHz or 13.56 MHz RFID cards.

By holding an authorised RFID card in front the integrated reader, the handle will open.

Easy to configure by software.

This handle does not require any external cabling to work.

Features

- Battery-operated handled with integrated RFID reader
- Authentication by 125 kHz or 13.56 MHz RFID cards
- Extremely energy-efficient battery operation (battery life min. 3 years)
- Configuration via USB port with Agent E configuration software (card administration, time profiles, reading out event logs)
- All handles has a connector for adding a door contact
- Data storage for 2,000 events
- Emergency power function and emergency opening via integrated USB port
- The installation in cabinets / racks of different manufacturers is solved with various adapters. On request



Swinghandle AGENT E consisting of:
 dish polyamide GF black;
 handle and shaft zinc-die powder-coated white aluminium;
 2 batteries, mounting and operating instructions

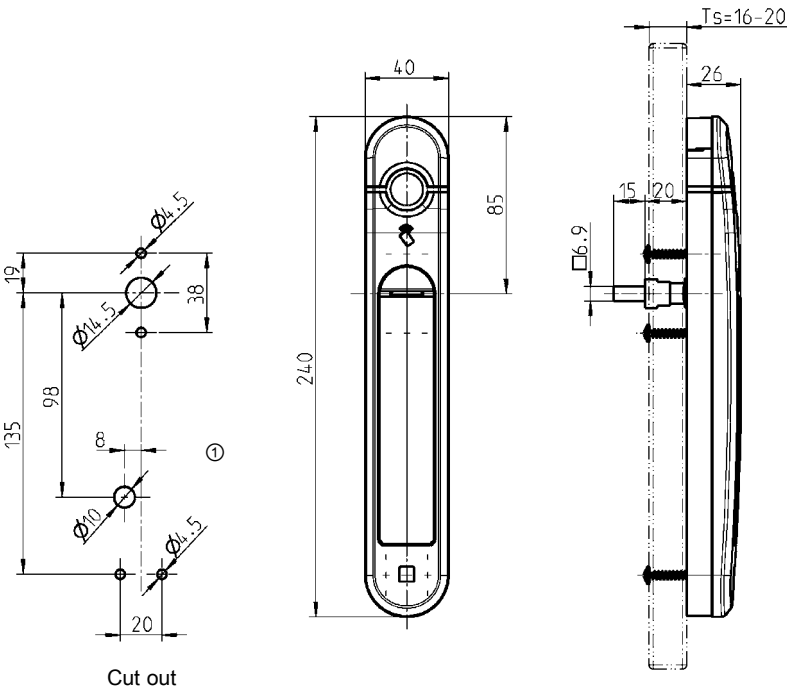
	for rod control or bearing bush	for cams
Stand-alone with RFID 125 kHz	on request	on request
Stand-alone with RFID 13.56 MHz	3000-U910-21	3000-U910-22
RFID Card		
125 kHz		3000-87
13.56 MHz		3000-88
Adapter set for bearing bush, adapter plate polyamide GF black; adapter m. s. precision casting zinc plated; fixing material m.s. zinc plated		
for door thickness 1.0 - 3.0		3000-U104-01
Adapter set for retrofitting		
various cabinet types		on request
USB adapter cable		
USB Standard-A on USB Micro-B		3000-U102

Further parts see page

– Rod control	3YA-120
	3YA-140
– Bearing bush	3YB-120
– Cam (GH=18)	1C-120
– Door contact	11A-400


Stand-alone version with swinghandle Agent E RFID Stand-alone

Swinghandle for furniture doors



Required for
① = door contact



Schwenkgriff Agent E RFID Stand-alone - functions						Tk = door contact ; SA = status display
Mode of operation	Authentication	Power	Opening standard	Opening optional	Connection option	
Stand-alone	RFID card (125 kHz or 13.56 MHz)	Battery	immediately		Tk	
<div><div></div><div>max. 128 RFID cards per handle Card management via USB with software tool</div></div>						

Agent E RFID Stand-alone

This version consist of a battery-operated AGENT E handle with integrated card reader for 125 kHz or 13.56 MHz RFID cards.

By holding an authorised RFID card in front the integrated reader, the handle will open.

Easy to configure by software.

This handle does not require any external cabling to work.

Features

- Battery-operated handled with integrated RFID reader
- Authentication by 125 kHz or 13.56 MHz RFID cards
- Extremely energy-efficient battery operation (battery life min. 3 years)
- Configuration via USB port with Agent E configuration software (card administration, time profiles, reading out event logs)
- All handles has a connector for adding a door contact
- Data storage for 2,000 events
- Emergency power function and emergency opening via integrated USB port
- The installation in furniture doors, in conjunction with different lock manufacturers, is solved with various adapters. On request



Swinghandle AGENT E consisting of:
dish polyamide GF black;
handle and shaft zinc-die powder-coated white aluminium;
2 batteries, mounting and operating instructions

	for furniture doors
Wireless with RFID 125 kHz	on request
Wireless with RFID 13.56 MHz	3000-U910-28
RFID Card	
125 kHz	3000-87
13.56 MHz	3000-88
Adapter AISI 303 for Agent E for furniture doors	
for □ 7 mm, 15 mm long	3000-115
other adapter	on request
USB adapter cable	
USB Standard-A on USB Micro-B	3000-U102

Further parts see page
– Door contact

11A-400

Electronic keypad lock for spring-loaded handles

Description:

Two handles can be connected to the electronic keypad lock systems. By entering a correct PIN code the respective handle will open.

Features

- Up to 5 PIN codes per handle, can be set by master code
- Blocking function in case of repeated failed attempts
- Simple to mount solenoid for spring-loaded handles
- Central control module for connecting all components
- Compact solution for single cabinets

Note:

Stabilised power supply unit 12 V at least 500 mA required (see page 11B-210).

Handle series suitable for the installation of solenoids

Program 1150



Program 1180



Program 2100



Program 2400



Technical Data

- Protection Class IP 40
- Temperature Range 0-60 °C

Further parts see page

Program 1150
– Swinghandle 1151 3C-420
3C-440

Program 1180
– Swing handle 3E-120
to 3E-520

Program 2100
– Swing handle 3H-320

Program 2400
– Swing handle 3K-220

– Power supply 11B-210

Stand-alone version
numeric keypad with electronics;
terminal strip with voltage conditioning unit for connecting the number keypad;
control module for actuating up to two solenoids;
fixing material;
operating and mounting instructions

and 1 solenoid for spring-loaded handles
(connection cable open 4 m)

3000-U01

and 2 solenoids for spring-loaded handles
(connection cable open 4 m)

3000-U02

Stand-alone version with combination handle

Combination handle with keypad lock

Description:

The integration of the keypad in the handle module of the handle series 2100 facilitates the mounting on the rack

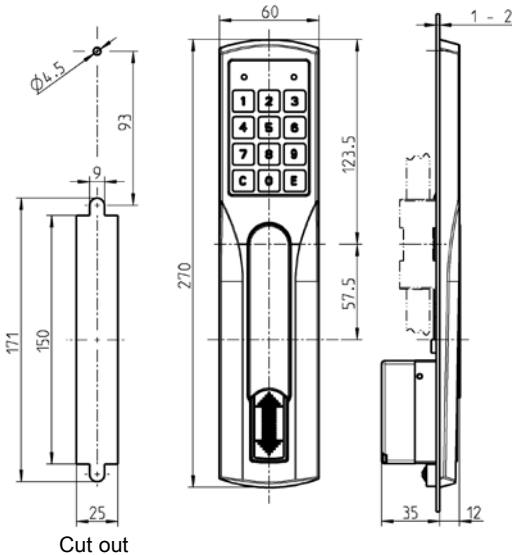
One further handle can be connected to the electronic keypad locking system. By entering a correct PIN code the respective handle will open.

Features

- Up to 5 PIN codes per handle, can be set by master code
- Blocking function in case of repeated failed attempts
- Simple to mount solenoid for spring-loaded handles
- Central control module for connecting all components
- Compact solution for single cabinets

Note:

Stabilised power supply unit 12 V at least 500 mA required (see page 11B-210).



Technical Data

- Protection Class IP 40
- Temperature Range 0-60 °C

Further parts see page

- Rod control 3YA-520
- 3YA-540

For the second solenoid Program 1150

- Swinghandle 1151 3C-420
- 3C-440

Program 1180

- Swing handle 3E-120
- to 3E-320

Program 2100

- Swing handle 3H-320

Program 2400

- Swing handle 3K-220

- Power supply 11B-210

Stand-alone version

swinghandle polyamide GF black; handle and shaft zinc-die black powder-coated;
solenoid and numeric keypad installed with electronics;
connection cable 4 m;
fixing material St zinc-plated;
terminal strip with voltage conditioning unit for connecting the number keypad;
control module with holder for DIN rail mounting

2100-U151

and 1 solenoid for spring-loaded handles
(connection cable open 4 m)

2100-U152

Stand-alone version with keypad lock

Electronic keypad lock for releasable handles and latches

Description:

Two handles or latches can be connected to the electronic keypad locking system. By entering a correct PIN code the respective lock will open. Alternatively both locks can be released simultaneously.

The release time is programmable.

Features

- Up to 5 PIN codes per handle, can be set by master code
- Blocking function in case of repeated failed attempts
- Simple to mount solenoid for spring-loaded handles
- Central control module for connecting all components
- Compact solution for single cabinets



Program 1150



Program 3000



Technical Data
Protection Class IP 40
Temperature Range 0-60 °C

Stand-alone version
numeric keypad with electronics;
terminal strip with voltage conditioning unit for connecting the number keypad;
control module for actuating up to two handles or locking devices;
power supply unit;
fixing material;
operating and mounting instructions

Set for releasable handles and single-point latches

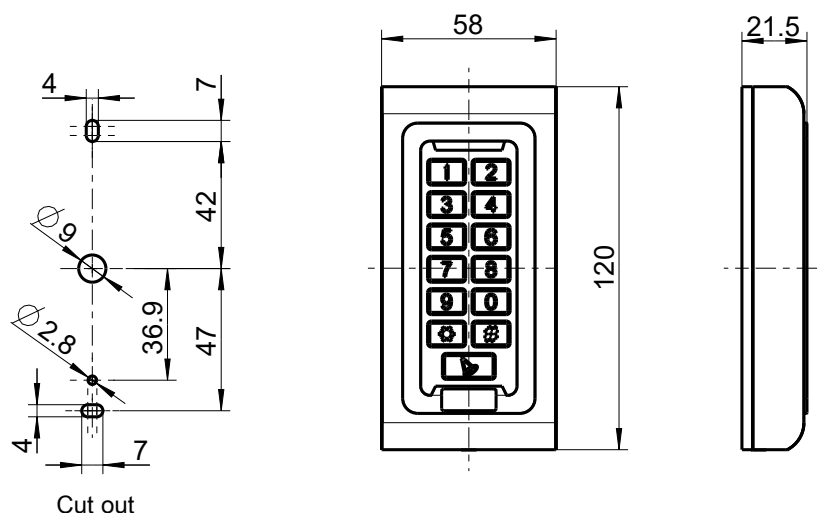
3000-U200

Further parts see page

Program 1150
– Swinghandle 1150 3C-160
11A-130

Keypad with integrated card reader

- The keypad with integrated card reader for cards in Mifare Classic format can be used in stand-alone applications in indoor and outdoor areas
- Authentication is done via RFID card, PIN or card and pin (2 factor authentication)
- 2,000 users can be stored locally
- A potential-free relay contact is available for controlling locks
- In case of unauthorised opening/vandalism, the reader may give an audible alarm



Power supply:	12 ... 24 VDC, <60 mA, standby <30 mA
Output:	Relay: max. 30 V DC, max. 1 A
Protection Class:	IP 68
Operating temperature:	-45 ... +60° C
Air humidity:	10...90 % r.h. (non-condensing)
Dimensions (L x W x H):	120 x 58 x 21.5 mm
Scope of supply:	Connection cable 250 mm with open wire ends

3000-U45-05

Further parts see page

– RFID card (3000-88)	11A-410
– Power supply	11B-210

Locking system unit

- This locking set is activated via control module of the Stand-alone versions for spring-loaded handles 3000-U07
- This set is used for opening spring-loaded handles. It is used instead of a mechanical push button or locking cylinder set



Locking system set PC+ABS-FR(40) black;
solenoid; electronics;
fixing material St zinc-plated

Control: via Lock Unit 3000-U07
Contact switching power: max. 48 VDC, 0.5 A
Scope of supply Connection cable 3 m

Connection cable with open cable ends

3000-U05

Further parts see page

- | | |
|------------------------------|---------|
| – Swinghandle 1151 | 3C-420 |
| – Swinghandle 1180 | 3E-320 |
| – Swinghandle 1185 | 3E-520 |
| – Control module for handles | 11B-210 |

power supply plug



Power supply plug, stabilised with Euro plug (Schuko), housing made of plastic black	
Output:	12 VDC 2,000 mA stabilised
connection cable with open cable ends for modules of type Kit	3000-03-00

control module for handles with locking system unit

Control module to control locking system units 3000-U05 for spring-loaded handles.

- The voltage conditioning for the triggering is done by this control module
- Connection option for max. 2 sets
- For the power supply a stabilised power supply unit 12 V DC min. 500 mA is required



Control for handles with solenoid

3000-U07

Control module for single point latches and handles 1150-U56/U58

Control module for control single point latches or handles of the type 1150-U56/U58. The module releases the latches or handles for a time period programmable in the Stand-Alone Keypad.

- Max. 2 locking devices or handles and max. 2 trigger buttons can be connected
- Stabilised power supply unit 12 V DC min. 700 mA required



Control module for single-point latches and handles 1150-U56/U58

3000-U07-01

Article No.	catalogue page	Article No.	catalogue page	Article No.	catalogue page	Article No.	catalogue page
Chapter 11A		3000-87	11A-410	3000-U301-02	11A-140	Chapter 11B	
1417	11A-230	3000-88	11A-110	3000-U301-03	11A-140	2100-U151	11B-130
1417	11A-410	3000-88	11A-115	3000-U301-04	11A-140	2100-U152	11B-130
2807	11A-400	3000-88	11A-120	3000-U303	11A-140	3000-03-00	11B-210
2834	11A-144	3000-88	11A-230	3000-U304-01	11A-144	3000-87	11B-110
1004-44-01AA	11A-150	3000-88	11A-260	3000-U304-02	11A-144	3000-87	11B-115
1150-B33	11A-130	3000-88	11A-410	3000-U304-03	11A-144	3000-88	11B-110
1150-U56	11A-130	3000-102-JB	11A-140	3000-U304-04	11A-144	3000-88	11B-115
1150-U56-01	11A-130	3000-111	11A-144	3000-U600	11A-146	3000-U01	11B-120
1150-U56-V	11A-130	3000-111	11A-146	3000-U600-01	11A-146	3000-U02	11B-120
1150-U56-01V	11A-130	3000-112-10	11A-146	3000-U600-02	11A-146	3000-U05	11B-200
1154-U6	11A-160	3000-115	11A-115	3000-U600-03	11A-146	3000-U07	11B-210
1154-U6-02	11A-160	3000-U08-01	11A-260	3000-U600-04	11A-146	3000-U07-01	11B-210
1154-U6-03	11A-160	3000-U13-02	11A-240	3000-U600-05	11A-146	3000-U45-05	11B-180
1154-U6-V	11A-160	3000-U25-00	11A-310	3000-U900-41	11A-120	3000-U102	11B-110
1154-U6-02V	11A-160	3000-U25-01	11A-310	3000-U911-41	11A-110	3000-U102	11B-115
1154-U6-03V	11A-160	3000-U32-02	11A-240	3000-U911-42	11A-110	3000-U104-01	11B-110
1317-U151-02	11A-150	3000-U35-00	11A-400	3000-U911-48	11A-115	3000-U200	11B-140
1317-U151-02HJ	11A-150	3000-U35-01	11A-400	3000-U980-02	11A-220	3000-U910-21	11B-110
1317-U161-02	11A-150	3000-U35-05	11A-400			3000-U910-22	11B-110
1317-U161-02HJ	11A-150	3000-U45-05	11A-250			3000-U910-28	11B-115
3000-03-00	11A-400	3000-U39-00	11A-310				
3000-03-02	11A-400	3000-U39-01	11A-310				
3000-78-PH	11A-140	3000-U47-01	11A-230				
3000-78-01KA	11A-140	3000-U47-02	11A-230				
3000-87	11A-110	3000-U47-07	11A-230				
3000-87	11A-115	3000-U47-08	11A-230				
3000-87	11A-120	3000-U68	11A-510				
3000-87	11A-230	3000-U68-101	11A-510				
3000-87	11A-260	3000-U68-102	11A-510				
		3000-U68-103	11A-510				
		3000-U68-104	11A-510				
		3000-U102	11A-120				
		3000-U104-01	11A-110				
		3000-U104-01	11A-120				
		3000-U141-02	11A-220				
		3000-U301-01	11A-140				

Notes:

A strong partner
by your side!



www.EMKA.com

EMKA Subsidiaries Worldwide:

ALGERIA EMKA France Tel. +33/254/320862 emka@emka-france.com	CHINA EMKA Industrial Hardware CO.Ltd. Tel. +86/22/82123759 info@emka.cn	ISRAEL * Kornass Mechanical Engineering Tel. +972/76/5400789 sales@kornass.com	PORTUGAL EMKA Beschlagteile Ibérica S.L. Tel. +351/910904688 info@emka-iberica.pt	TURKMENISTAN EMKA Kilit Sistemleri Metal Sanayi ve Ticaret Ltd. Şti. Tel. +90/262/2909097 info@emkakilit.com.tr
ARMENIA EMKA Kilit Sistemleri Metal Sanayi ve Ticaret Ltd. Şti. Tel. +90/262/2909097 info@emkakilit.com.tr	CROATIA EMKA Okovi d.o.o. Tel. +385/35/270073 info@emka-okovi.hr	ITALY EMKA Italia s.r.l. Unipersonale Tel. +39/045/6471070 info@emka.it	ROMANIA S.C. EMKA Beschlagteile S.R.L. Tel. +40/269/222700 info@emka.ro	TURKEY EMKA Kilit Sistemleri Metal Sanayi ve Ticaret Ltd. Şti. Tel. +90/262/2909097 info@emkakilit.com.tr
AUSTRIA EMKA Beschlagteile Ges.m.b.H. Tel. +43/2143/43063 info@emka-beschlagteile.at	CZECH REPUBLIC EMKA Beschlagteile CZ Tel. +43/2143/43063 info@emka-solutions.cz	JAPAN * TOCHIGIYA Co., Ltd. Tel. +81/48/2283072 support@tochigiya.co.jp	RUSSIA * OOO "EmTechProm" Tel. +7/812/6424397 info@emtechprom.ru	UAE EMKA Middle East FZE Tel. +971/42844528 info@emka.ae
AUSTRALIA * Lock Focus Pty. Ltd. Tel. +61/3/97981322 lockf@lockfocus.com.au	DENMARK * A/S Megatrade Beslag Tel. +45/44916700 mega@megatrade.dk	KAZAKHSTAN EMKA Kilit Sistemleri Metal Sanayi ve Ticaret Ltd. Şti. Tel. +90/262/2909097 info@emkakilit.com.tr	SERBIA EMKA Okovi d.o.o. Tel. +385/35/270073 info@emka-okovi.hr	UKRAINE EMKA Ukraine Tel. +38/096/7535875 info@emka.in.ua
AZERBAIJAN EMKA Kilit Sistemleri Metal Sanayi ve Ticaret Ltd. Şti. Tel. +90/262/2909097 info@emkakilit.com.tr	ESTONIA EMKA Polska Sp. Z o.o. Tel. +48/323606026 info@emka.net	LATVIA EMKA Polska Sp. Z o.o. Tel. +48/323606026 info@emka.net	SINGAPORE * VF Fastening Systems PTE Ltd. Tel. +65/675/23033 vincent@vffastening.com.sg	UNITED KINGDOM EMKA (UK) Ltd. Tel. +44/2476/616505 info@emka.co.uk
BELARUS EMKA Polska Sp. Z o.o. Tel. +48/323606026 info@emka.net	FINLAND EMKA Scandinavia Tel. +46/36/314130 info@emka.se	LITHUANIA EMKA Polska Sp. Z o.o. Tel. +48/323606026 info@emka.net	SLOVAKIA EMKA Beschlagteile Ges.m.b.H. Tel. +43/2143/43063 miro.emka@ba.telecom.sk	USA EMKA Inc. Tel. +1/717/9861111 info@emkausa.com
BELGIUM EMKA Benelux B.V. Service Office Tel. +31/413/323510 sales@emka.org	FRANCE EMKA France Tel. +33/254/320862 emka@emka-france.com	MEXICO EMKA Mexico Beschlagteile Tel. +52/44/22095217 info@emka.mx	SOUTH AFRICA * Enclosure Solutions Tel. +27/11/9737260 info@enclosuresolutions.co.za	UZBEKISTAN EMKA Kilit Sistemleri Metal Sanayi ve Ticaret Ltd. Şti. Tel. +90/262/2909097 info@emkakilit.com.tr
BOSNIA-HERZEGOVINA EMKA Bosnia d.o.o. Goražde Tel. +38/738/241310 info@emka.ba	GEORGIA EMKA Kilit Sistemleri Metal Sanayi ve Ticaret Ltd. Şti. Tel. +90/262/2909097 info@emkakilit.com.tr	MONTENEGRO EMKA Bosnia d.o.o. Goražde Tel. +38/738/241310 info@emka.ba	SOUTH KOREA * Geo Jeon Co. Ltd. Tel. +82/314/335508 geojeon@emkakorea.co.kr	VIETNAM * Terramar Engineering and Machinery (Pte.) Ltd. Tel. +84/8/39153209 cam@terramar.com
CANADA EMKA Inc. Tel. +1/717/9861111 info@emkausa.com	GREECE * EMKA Hellas Tel. +30/21041/83183 info@emka-hellas.com	NETHERLANDS EMKA Benelux B.V. Tel. +31/413/323510 info@emka.org	SPAIN EMKA Beschlagteile Ibérica S.L. Tel. +34/672262672 info@emka-iberica.es	
CHILE * NDU Ingenieria Ltda. Tel. +56/22/9639861 ventas@ndu.cl	HUNGARY EMKA Beschlagteile Tel. +36/1/2360032 info@emka.hu	NORWAY EMKA Scandinavia Tel. +46/36/314130 info@emka.se	SWEDEN EMKA Scandinavia Tel. +46/36/314130 info@emka.se	
	INDIA EMKA India P. A. Pvt. Ltd. Tel. +91/80/48542727 info@emka.in	POLAND EMKA Polska Sp. z o.o. Tel. +48/326663300 info@emka.net	SWITZERLAND EMKA Beschlagteile AG Tel. +41/33/8260220 info@emka.ch	

* Agencies

EMKA Production Sites:



Company Headquarters: Velbert



Goražde (Plant 1)



Arnedo



Birmingham



Tianjin



Wuppertal



Goražde (Plant 2)



Henriville



Mionica



Bhilai

www.emka-electronics.com

www.EMKA.com



EMKA Beschlagteile GmbH & Co. KG

Langenberger Str. 32 • 42551 Velbert, Germany • Tel.: +49/2051/273-0 • Fax: +49/2051/273-128 • E-Mail: info@emka.com • www.emka.com