

ENCONNEX

Product Catalog



Innovation. Speed. Design.

Contents

Cabinets

Server/Network Cabinet4

Radio Frequency (RF) Shielded Cabinet6

Multi-Bay Cabinets7

Office-in-a-Box Solution (OIB)8

Advanced Office-in-a-Box Solution (AOIB)9

Cabinet Accessories

Blanking Panels10

Cable Management10

Equipment Shelves11

Connectivity

Copper Cabling12

High Speed Copper Cabling13

Transceivers14

Fiber15

Connector Cleaners18

Adapters18

Panels19

Containment

Aisle Containment20

Power

PDU22

Basic PDUs22

Switched PDUs22

Outlet Metered, Outlet Switched PDUs22

Input Metered PDUs22

Outlet Metered PDUs22

Power Cords23

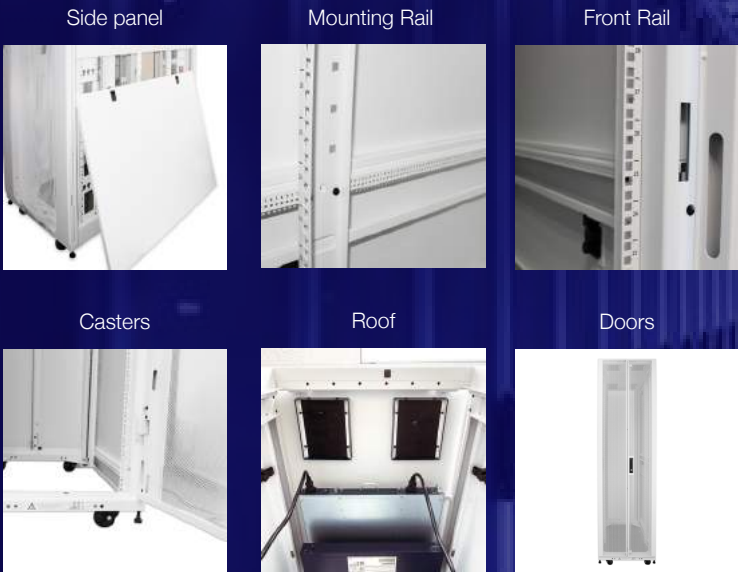
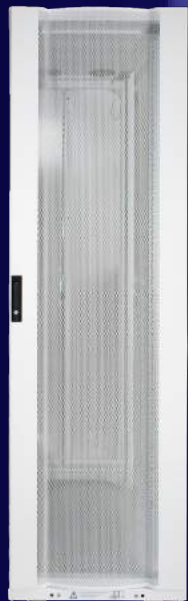
UPS24

Cooling

In-Row Cooling (IRC) Units26



Enconnex is a global manufacturer of data center infrastructure solutions, including racks and cabinets, power and cooling, connectivity products, PDUs, and accessories. All of our products are manufactured to our exacting standards to ensure maximum value. Our pedigree lies in product development and highly efficient manufacturing processes. We can move rapidly from concept to design to finished product, so our customers can go to market faster and accelerate ROI. We keep our most popular products in stock and ready to ship which helps to improve our customers speed to market. Our team is here to help you select the right products, and to develop solutions to meet your specific needs.



The Enconnex ECX series server cabinet is the ultimate solution designed and engineered for demanding data center environments. The durable solid steel construction provides some of the best load ratings in the industry.



Server Cabinet Configurations

SKU	Depth	Width	Height
ECX-61124-C3	1100mm	600mm	24U
ECX-61142-C3	1100mm	600mm	42U
ECX-61145-C3	1100mm	600mm	45U
ECX-61148-C3	1100mm	600mm	48U
ECX-61152-C3	1100mm	600mm	52U
ECX-61224-C3	1200mm	600mm	24U
ECX-61242-C3	1200mm	600mm	42U
ECX-61245-C3	1200mm	600mm	45U
ECX-61248-C3	1200mm	600mm	48U
ECX-61252-C3	1200mm	600mm	52U

Network Cabinet Configurations

SKU	Depth	Width	Height
ECX-81124-C3	1100mm	800mm	24U
ECX-81142-C3	1100mm	800mm	42U
ECX-81145-C3	1100mm	800mm	45U
ECX-81148-C3	1100mm	800mm	48U
ECX-81152-C3	1100mm	800mm	52U
ECX-81224-C3	1200mm	800mm	24U
ECX-81242-C3	1200mm	800mm	42U
ECX-81245-C3	1200mm	800mm	45U
ECX-81248-C3	1200mm	800mm	48U
ECX-81252-C3	1200mm	800mm	52U

All Server and Network Cabinets are offered in standard black and white. Custom colors and configurations are available upon request.



Radio Frequency (RF) Shielded Cabinet

The RF Shielded Cabinet provides industry leading radio frequency shielding technology, isolating interference with outside equipment and networks. The enclosure is designed with a standard 45U rack height and 1200mm depth to go within a proper form fit and function for the unit.

I/O Panel



Honeycomb Door Vents



Mobile Testing Trays



Electrical



Cooling



Locking Door



Multi-Bay Cabinets

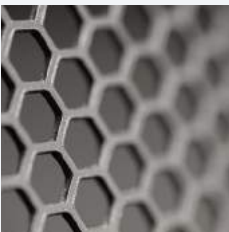
The Multi-Bay Server Cabinet is available in a two, three, or four compartment configuration. Each compartment is secured through a three-digit combination lock with key override and comes with 19" rack-mounting rails and optional cable management.



Doors include three-digit combination lock with key override



Secure separation panel inside the rack



Mesh doors for airflow



Casters - 3-inch heavy-duty



SKU	Overall Space			Usable Space		
	Width	Depth	Height	Width	Depth	Height
ECX-RFC-61445-1P2X20	673mm	1447mm	45U	673mm	1219mm	42U
ECX-RFC-61345-1P2X20	600mm	1303mm	45U	600mm	1100mm	42U

Name	SKU	Width	Depth	Height
2-Bay Cabinet	ECX-61245-2BAY	600mm	1200mm	45U
3-Bay Cabinet	ECX-61245-3BAY	600mm	1200mm	45U
4-Bay Cabinet	ECX-61245-4BAY	600mm	1200mm	45U

Office-in-a-Box Solution (OIB)

The OIB (OFFICE-IN-A-BOX) from Enconnex is an enclosed, soundproof cabinet solution built with an integrated rack-mounted cooling unit. This system is ready for your IT equipment, and is ideal for areas where space is limited and high noise levels could be a concern. The smart cabinet is a perfect solution for small to medium offices, retail outlets, educational institutions, and remote edge computing locations. With plexiglass doors and sound dampening walls, roof, and floor panels, this all-in-one cabinet can be installed nearly anywhere. **Available with AC6000*

The Enconnex OIB and AOIB Cabinets make doing business easier than ever before making sure you and your customer’s information is safe and secure.

Custom intake and exhaust

5kW Rack Cooling Unit (RCU)

Plexiglass doors with key lock front and rear door

Sound dampening, custom OIB side panels

3” casters and leveling feet



SKU	Compatibility	Specifications	
	Region	Cooling	AC Frequency
ECX-OIB-5K60	US	5kW	60Hz
ECX-OIB-5K50	EU	5kW	50Hz

Advanced Office-in-a-Box Solution (AOIB)

The AOIB (ADVANCED OFFICE-IN-A-BOX) from Enconnex is a fully integrated enclosure system that provides the power, cooling, management, and security you need in a small footprint. Equipped with 3.5kw of cooling, power management, environmental sensors, remote monitoring and intuitive controls, this turn-key solution is 100% ready to be outfitted with whatever equipment you need for your business to be successful. The AOIB is ideal for areas where space is limited and / or heat levels could be a concern, and is a perfect solution for small to medium offices, retail outlets, educational institutions, and remote edge computing locations. **Available with AC6000*



Top-mounted, self-contained cooling unit for managing up to a 3.5kw IT load

Integrated monitoring system with HMI touch-screen for intuitive system management and monitoring

Power control module with breaker panel for precise power management and protection

Electro-magnetic, auto-opening door system forces the doors open in emergency high-heat and power outage situations

Magnetic, movable temperature / humidity and smoke detection sensors for monitoring your enclosed environment

Front plexiglass door and split metal rear doors w/ key locks provide a secure solution for your IT equipment

Locking side panels for quick side access and added security

Leak detection cord at the bottom of the unit to quickly alert you to any moisture risks

SKU	Compatibility	Specifications	
	Region	Cooling	AC Frequency
ECX-AOIB-3K50-42U	EU	3kW	50Hz

Blanking Panels

The Enconnex Clip-on Blanking Panels are designed to provide our customers with a low cost, high quality airflow management solution. These panels are the best way to ensure cabinets are provided with excellent airflow management and heat mitigation by blocking off any unused cabinet space.



Clip-on Blanking Panel 1U

ECX-IUBLANPAN-1U



Clip-on Blanking Panel 2U

ECX-IUBLANPAN-2U

Cable Management

The Enconnex line of cable managers are designed to provide our customers with the best cable retention available, with the best value. We offer a wide range of sizes designed to maximize usable cabinet space and maintain proper airflow efficiency.

Single-Sided Cable Manager

ECX-CBLMGR-HZ-SGL



Double-Sided Cable Manager

ECX-CBLMGR-HZ-DBL



Single-Sided Metal Cable Manager

ECX-CBLMGR-HZMTL



4-Ring Cable Manager

ECX-CBLMGR-HZMTL-DRNG



HD Cable Manager

ECX-CBLMGR-HZ



Vertical Cable Duct

ECX-CBLMGR-VRT



Equipment Shelves



1RU Sliding Shelf 750mm Depth

ECX-SLDGSHLF-750MM-TL

The Enconnex Sliding Shelf provides all of the features required for cabinet storage needs. Our shelves are engineered from high-quality, rigid material that allows a variety of equipment to be properly stored and accessed with ease.



Apple Mac Mini 4x Shelf

ECX-MM4-G118RSHELF

The Enconnex Apple Mac Mini Sliding Shelf is a 1U sliding metal shelf that holds four (4) Mac Mini devices including an airflow management channel and thumbscrews to secure the Mac Minis in place. Our efficient design provides maximum airflow and secure, isolated cable management for your equipment.



Mobility Shelf

ECX-MBL-TRAY

The Enconnex Mobility Shelf is a 2U metal shelf with slots to hold up to 57 mobile phones. This shelf is engineered from high-quality, rigid material for long-lasting durability.



Apple Mac Pro 2x Sliding Shelf

ECX-MPRO-2X-SHLF

The Enconnex 2X Sliding Shelf is designed to easily mount up to two Mac Pro devices per shelf in your standard 19-inch cabinet rack in a 2x1 configuration. The included dual cable management arms and accessories help to manage your device cables to keep them out of the way when sliding the shelf.



Apple Mac Pro 4x Sliding Shelf

ECX-MPRO-1RU-4X

The Enconnex 4x Sliding Shelf is designed to easily mount up to four Mac Pro devices per shelf in your standard 19 inch cabinet rack in a 2x2 configuration. The included front air plate provides device protection as well as excellent ventilation for your Mac Pro devices.



Apple Mac Pro 4x Power Chassis

ECX-MACPRO-PWRCHS

The Enconnex Apple Mac Pro Power Chassis is a 4U high shelf engineered to safely mount and protect your current generation Apple Mac Pro devices. Our efficient design provides maximum airflow and secure, isolated cable management for your equipment in a 1x4 configuration with sliding rails for easy access.

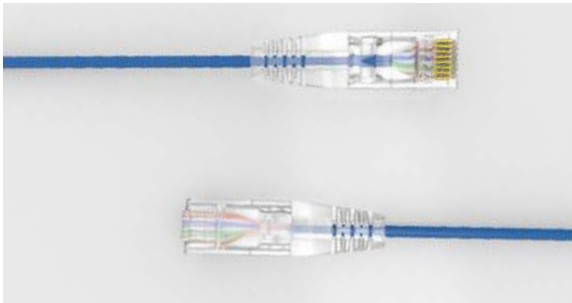
Copper Cabling

All Enconnex patch cords are manufactured and tested for the highest quality standards.
**Available in multiple lengths*



Cat6*
ECX-CAT6-BL-XXFT

The Enconnex Cat6 patch cord ensures premium connectivity and also backwards compatibility.



Cat6 Small OD*
ECX-CAT6-28AWG-BL-XXFT

Enconnex Cat6 Small OD patch cord allows for more space and airflow than the standard Cat6 cable.



Cat6A*
ECX-CAT6A-BL-XXFT

The Enconnex Cat6A patch cord is made with copper wiring to ensure premium connectivity, and supports networks running up to 10Gbps.



Cat6A Small OD*
ECX-CAT6A-28AWG-BL-XXFT

The Enconnex Cat6A Small OD patch cord allows for more space and airflow than the standard Cat6A cable.



Cat5E*
ECX-CAT5E-BL-XXFT

The Enconnex Cat5E patch cord is made for high-performance network connections supporting speeds of up to 1,000 Mbps and significantly reduces crosstalk.



Cat5E Small OD*
ECX-CAT5E-28AWG-BL-XXFT

The Enconnex Cat5E Small OD patch cord allows for more space and airflow than the standard Cat5E cable.

High Speed Copper Cabling



The Enconnex Direct Attach Copper (DAC) cable offers high performance at a low cost with less power consumption, and low latency connectivity option. Each DAC cable is fully tested for compatibility and are MSA compliant. **Available in multiple lengths*



SFP+ (10G) DAC*
ECX-SFP-DAC-XX-XM

This SFP+ supports data rates of up to 10G.



SFP28 (25G) DAC*
ECX-SFP28-DAC-XX-XM

This SFP28 supports data rates of up to 25G.



QSFP+ (40G) DAC*
ECX-QSFP-DAC-XX-XM

This QSFP+ supports data rates of up to 40G.



QSFP+ (40G) to 4x SFP+ (10G) DAC*
ECX-QSFP-4SFP-DAC-XX-XM

This QSFP+ supports data rates of up to 40G.



QSFP28(100G) DAC*
ECX-QSFP28-DAC-XX-XM

This QSFP28 supports data rates of up to 100G.

Transceivers

The Enconnex Transceivers are fully tested for compatibility and are designed to be MSA compliant.

**Available in multiple configurations*



SFP+ (10G) SR*
ECX-SFP10-SR-XX

The SFP+ SR Transceiver supports data rates of up to 10G with an enhanced fiber connection.



QSFP+ (40G) SR4*
ECX-QSFP40-SR-XX

The QSFP+ SR4 Transceiver supports data rates of up to 40G with an enhanced fiber connection.



QSFP28 (100G) SR4*
ECX-QSFP28-SR-XX

The QSFP28 SR4 Transceiver supports data rates of up to 100G with an enhanced fiber connection.



SFP+ (10G) LR*
ECX-SFP10-LR-XX

The SFP+ LR Transceiver supports data rates of up to 10G with an enhanced fiber connection.



QSFP+ (40G) LR4*
ECX-QSFP40-LR-XX

The QSFP+ LR4 Transceiver supports data rates of up to 40G with an enhanced fiber connection.



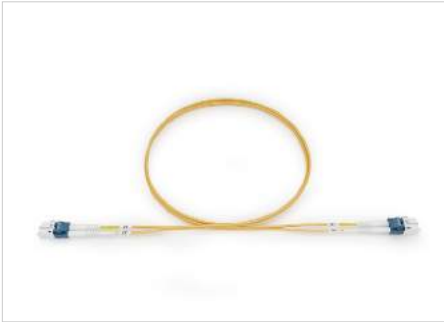
QSFP28 (100G) LR4*
ECX-QSFP28-LR-XX

The QSFP28 LR4 Transceiver supports data rates of up to 100G with an enhanced fiber connection.

Fiber

The Enconnex fiber patch cords are manufactured and tested to the highest quality standards.

**Available in multiple lengths*



LC-LC Duplex Singlemode*
ECX-LCLC2-502R-XM

The core of a single mode fiber optic cable is 9/125µ (micron) and supports long haul applications.



LC-LC Duplex Multimode OM3*
ECX-LCLC1-302R-XM

This patchcord is an OM3 “Aqua” laser-optimized, multimode cable with a 50 µm core and 125 µm cladding diameter.



LC-LC Duplex Multimode OM4*
ECX-LCLC1-402R-XM

This patchcord is an OM4 “Aqua” laser optimized, multimode cable with a 50 µm core and is backwards compatible with OM3/OM2 fibers.



LC-LC Uni-Boot Multimode OM4 Fiber Cable with Polarity Switching and Pull Tab*
ECX-LCPPI-402L-XM

The Enconnex LC-LC Uni-Boot Multimode OM4 patch cords are manufactured and tested to the highest quality standards. This patchcord is an OM4 “Aqua” laser-optimized, multimode cable with a 50 µm core and 125 µm cladding diameter.



LC-LC Uni-Boot Multimode OM3 Fiber Cable with Polarity Switching and Pull Tab*
ECX-LCPPI-302L-XM

The Enconnex LC-LC Uni-Boot Multimode OM3 patch cords are manufactured and tested to the highest quality standards. This patchcord is an OM3 “Aqua” laser-optimized, multimode cable with a 50 µm core and 125 µm cladding diameter.



LC-LC Uni-Boot Singlemode Fiber Cable with Polarity Switching and Pull Tab*
ECX-LCPP2-502L-XM

The Enconnex LC-LC Uni-Boot Single Mode SM patch cords are manufactured and tested to the highest quality standards. This patchcord is an OS2 “Yellow” laser-optimized, multimode cable with a 9 µm core and 125 µm cladding diameter.



Fiber Loopbacks Singlemode
ECX-LCLC2-501R-LB

The Enconnex Fiber Loopbacks Singlemode is intended to test the send and receive capabilities by providing a looped signal. This can help validate the cabling infrastructure without needing to have all hardware fully deployed.



Fiber Loopbacks OM3
ECX-LCLC1-301R-LB

The Enconnex LC OM3 Loopback is used for port testing and network troubleshooting. Loopbacks are available in singlemode/multimode, and various connector types.

All Enconnex fiber patch cords include a test report and are assigned a unique serial number for traceability. The Enconnex MTP patch cords are designed for use in all highdensity applications and follows MPO standards. This fiber breakout cable is used to directly connect legacy ports or between panels/cassettes. The Enconnex MTP patch cords are designed for use in all high-density applications and follows MPO standards. **Available in multiple lengths*



MTP-MTP 12F Singlemode*
ECX-MTMT3-512P-XM

This fiber breakout cable is used to directly connect QSFP+ 40G and QSFP28 100G LR ports.



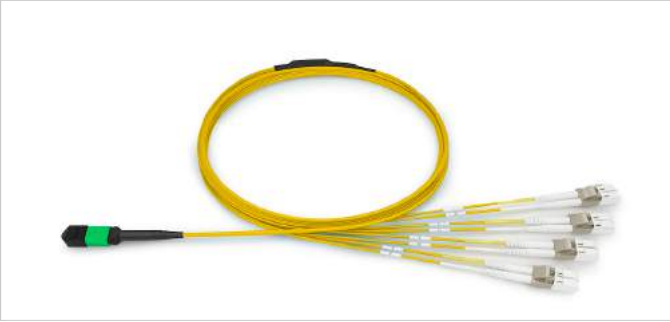
MTP-MTP 12F Multimode OM3*
ECX-MTMTI-312P-XM

This fiber breakout cable is used to directly connect QSFP+ 40G and QSFP28 100G SR ports.



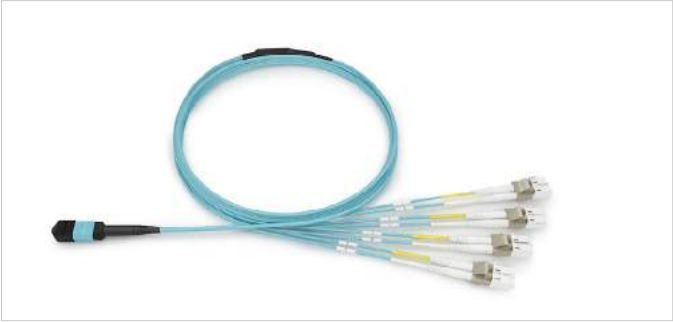
MTP-MTP 12F Multimode OM4*
ECX-MTMTI-412P-XM

This fiber breakout cable is used to directly connect QSFP+ 40G and QSFP28 100G SR ports.



MTP-LC 8F Singlemode
ECX-MTLC4-508P-XM

This fiber breakout cable is used to directly connect QSFP+ to (4) SFP+ LR ports.



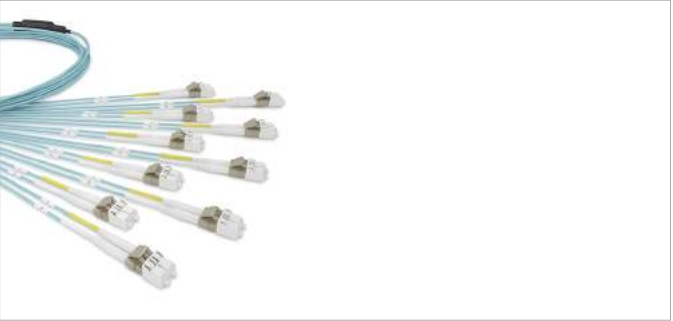
MTP-LC 8F Multimode OM3
ECX-MTLCI-308P-XM

This fiber breakout cable is used to directly connect QSFP+ to (4) SFP+ SR ports.



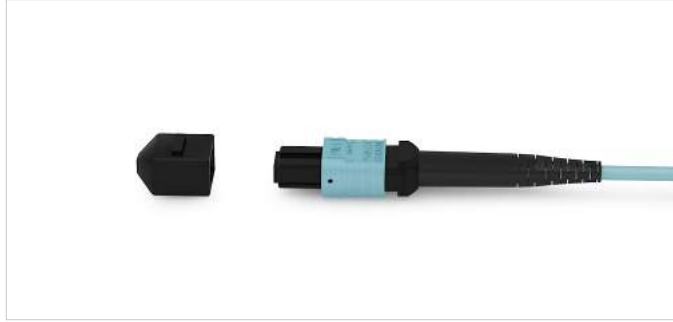
MTP-LC 8F Multimode OM4
ECX-MTLCI-408P-XM

This fiber breakout cable is used to directly connect QSFP+ to (4) SFP+ SR ports.



MTP-LC 20F Multimode OM3
ECX-MTLCI-320

This fiber breakout cable is used to directly connect legacy CFP SR10 to (20) SFP+ SR ports.



MTP-MTP 24F Multimode OM3
ECX-MTMTI-324P-XM

This fiber breakout cable is used to directly connect legacy 100G SR10 ports or between panels/cassettes.



MTP-MTP 24F Multimode OM4
ECX-MTMTI-424P-XM

This fiber breakout cable is used to directly connect legacy 100G SR10 ports or between panels/cassettes.

Connector Cleaners

The Enconnex Connector Cleaners have the ability to be inserted into the patch cord or patch panel to clean the connector endface. Our Connector Cleaners are designed to act as the first step of troubleshooting signal loss.



IBC SC
ECX-SC-CLNR

The 2.5mm connector cleaner is designed for cleaning the 2.5mm ferrule endfaces for SC, ST, and FC connectors with UPC and APC polishes.



IBC MTP
ECX-MPO-CLNR

The MTP-MPO connector cleaner is designed to clean the endfaces of the MTP and MPO connectors.



IBC LC
ECX-LC-CLNR

The 1.25mm connector cleaner is designed for cleaning the 1.25mm ferrule endfaces for LC and MU.

Adapters



MTP Adapter (Inverted)
ECX-ADP-MTP-GY

The Enconnex Adapters allow users to interconnect and precisely align two connectors of the same type. The adapter is inverted (Key up - Key up) and can accommodate 4F to 72F MTP/MPO connectors. These adapters perform exceedingly well with repeatable results.



LC Singlemode Adapter
ECX-ADP-LC-DX-AQ

The Enconnex fiber optic mating sleeve adapters allow users to interconnect and precisely align two connectors of the same type. The multimode aqua adapters are manufactured with ceramic zirconia sleeves and exceeds performance with repeatable results.



MTP Adapter Faceplate (Inverted)
ECX-ADP-MTP-6PK-GY

6xMTP Gray (Non Inverted) Feed-Through Face Plate



MTP Adapter (Non-Inverted)
ECX-ADP-MTP-BK

The Enconnex fiber optic mating sleeve adapters allow users to interconnect and precisely align two connectors of the same type. The multimode aqua adapters are manufactured with ceramic zirconia sleeves and exceeds performance with repeatable results. Adapter MTP, Key up-Key down, Black



LC Multimode Adapter
ECX-ADP-LC-DX-BL

The Enconnex fiber optic mating sleeve adapters allow users to interconnect and precisely align two connectors of the same type. The multimode aqua adapters are manufactured with ceramic zirconia sleeves and exceeds performance with repeatable results.



MTP Adapter Faceplate (Non-Inverted)
ECX-ADP-MTP-6PK-BK

6xMTP Gray (Inverted) Feed-Through Face Plate

Panels



Blank Panel Plate
ECX-PL-BP

Compatible with both Enconnex 5 Slots (1U) and 14 Slots (2U) fiber panels. It covers empty spaces to prevent dust contamination, and prevent hot air penetration. The 2 pins quickly snap into the fiber panel for easy network deployment and changes.



1U 24 Port Cat6 Pass Through Panel w/ Module with Cable Manager
ECX-24-CAT6-PNL-FT

The Enconnex 1U Cat6 panel is designed with 24 ports for quick and easy access with minimum installation time. The rear cable management bars can be removed and keystone jacks can easily be replaced in the field.



1U 48 Port Cat6
ECX-48-CAT6-PNL-FT

The Enconnex 1U Cat6 panel is designed with 48 ports for quick and easy access with minimum installation time. The rear cable management bars can be removed and keystone jacks can easily be replaced in the field.



1U High Density Patch Panel 5 Slot
ECX-1UPL-5

The 1U Modular Cassette patch panel supports up to five high density modular cassettes in a 1U form factor, allowing for maximized rack space. With a removable fold-down door panel features on the front of the unit, connections are protected.



2U High Density Patch Panel 14 Slot
ECX-2UPL-14

The 2U Modular Cassette patch panel supports up to 14 high density modular cassettes in a 2U form factor, allowing for maximized rack space. With a removable fold-down door panel features on the front of the unit, connections are protected.



Aisle Containment

Enconnex hot- and cold-aisle containment systems isolate chilled supply air from hot exhaust air and minimize cooling loss by focusing chilled air on equipment. Aisle containment contributes to energy savings by enabling you to increase supply air and water temperature set points, and protects sensitive equipment by eliminating hotspots and improving the overall cooling potential of data center air conditioning units.

Enconnex aisle containment solutions are ideal for new data center buildouts as well as retrofits, and work in both raised-floor and slab environments. You can easily design your solution by choosing the type of containment, type of aisle, and the doors, roof, panels, security, and accessories. One of our containment specialists will help you select from our steel, aluminum, tempered glass and polycarbonate panel, based upon the conditions in your data center and your energy savings plan.



Product Features

Eliminates hot and cold air mixing

Works in both raised-floor and slab environments

Increases cooling capacity and airflow

Energy savings

Less investment, yielding more savings

Maximizes data center cooling efficiencies

Enconnex cooling products are deployed in some of the most demanding facilities. Contact us for guidance in designing your solution and ask about our fully customized offerings.

Applications

- Data Center
- High-density applications
- Energy rebate programs





PDU Type	SKU	Region	Input Voltage	Input Current	Phase Connection	Input Plug Type	Outlet Count C13 + C19
Basic	ECX-BV1236060-P	International	230V	32A	1 Phase	IEC 60309 2P+E 6h (IP44)	36 + 6
	ECX-BV1224000-P	International	230V	32A	1 Phase	IEC 60309 2P+E 6h (IP44)	24 + 0
	ECX-BV1120020-N	International	230V	16A	1 Phase	IEC 60309 2P+E 6h (IP44)	20 + 2
	ECX-BV1636060-R	International	400V	16A	3 Phase	IEC 60309 3P+N+E 6h (IP44)	36 + 6
	ECX-BV1730120-T	International	415/230V	32A	3 Phase	IEC 60309 3P+N+E 6h (IP44)	30 +12
	ECX-BH1724000-T	International	415/230V	32A	3 Phase	IEC 60309 3P+N+E 6h (IP44)	24 + 0
Input Metered	ECX-MV1724120-T	International	415/230V	32A	3 Phase	IEC 60309 3P+N+E 6h (IP44)	24 + 12
	ECX-MV1120040-N	International	230V	16A	1 Phase	IEC 6039 2P+E 6h (IP44)	20 +4
	ECX-MV1636060-R	International	400V	16A	3 Phase	IEC 60309 3P+N+E 6h (IP44)	36 + 6
	ECX-MV1236060-P	International	230V	32A	1 Phase	IEC 60309 2P+E 6h (IP44)	36 + 6
	ECX-MV1232060-E	North America	200-240V	30A	1 Phase	NEMA L6-30P	32 + 6
	ECX-MV1730060-G	North America	208V	30A	3 Phase	NEMA L21-30P	30 + 6 *
	ECX-MV1824120-L	North America	208V	60A	3 Phase	IEC 60309 460P9 (IP44)	24 + 12
Switched	ECX-SV1712120-T	International	400V	32A	3 phase	IEC 60309 532P6 (IP44)	12 + 12
	ECX-SV1212121-P	International	230V	32A	1 Phase	IEC 60309 2P+E 6h (IP44)	12 + 12
	ECX-SV1220040-P	International	230V	32A	1 Phase	IEC 60309 2P+E 6h (IP44)	20 + 4
	ECX-SV1120040-N	International	230V	16A	1 Phase	IEC 60309 2P+E 6h (IP44)	20 + 4
	ECX-SV1630060-R	International	400V	16A	3 Phase	IEC 60309 3P+N+E 6h (IP44)	30 + 6
	ECX-SV1812120-K	North America	208V	50A	3 Phase	Hubbell CS8365C	12 + 12
	ECX-SV1212120-E	North America	200-240V	30A	1 Phase	NEMA L6-30P	12 + 12
Outlet Metered	ECX-PV1724120-T	International	415/230V	32A	3 Phase	IEC 60309 3P+N+E 6h (IP44)	24 + 12
	ECX-PV1812120-L	North America	208V	60A	3 Phase	IEC 60309 460P9 (IP44)	12 + 12
Outlet Metered, Outlet Switched	ECX-WV1724121-T	International	415/230V	32A	3 Phase	IEC 60309 3P+N+E 6h (IP44)	24 + 12
	ECX-WV1224080-P	International	230V	32A	1 Phase	IEC 60309 2P+E 6h (IP44)	24 + 8
	ECX-WV1220040-P	International	230V	32A	1 Phase	IEC 60309 2P+E 6h (IP44)	20 + 4
	ECX-WV1224120-E	North America	200-240V	30A	1 Phase	NEMA L6-30P	24 + 12
	ECX-WV1724120-G	North America	208V	30A	3 Phase	NEMA L21-30P	24 + 12
	ECX-WH1208000-E	North America	200-240V	30A	1 Phase	NEMA L6-30P	8 + 0
	ECX-WV1824120-L	North America	208V	60A	3 Phase	IEC 60309 460P9 (IP44)	24 + 12
	ECX-WV1730060-G	North America	208V	30A	3 Phase	NEMA L21-30P	30 + 6
	ECX-WV1730061-G	North America	208V	30A	3 Phase	NEMA L21-30P	30 + 6

* Plus two NEMA 5-20R outlets



The Enconnex Power Cords are most commonly used between a device and a PDU mounted in a rack or a cabinet. These power cords can connect directly to standard outlets, a compatible UPS or PDU with AC outlets.

**Available in multiple lengths*

SKU	Power Cord Type	Description
ECX-C13C14-18AWG-XX	C13 to C14 18AWG	Power Cord, Black, C13/C14, 18AWG
ECX-C13C14-14AWG-XX-90X	C13 to C14 14AWG 90 Degree	Power Cord, Black, C13/C14, 14AWG (90 dregree on c20 plug angle right or left)
ECX-C13C20-14AWG-XX	C13 to C20 14AWG	Power Cord, Black, C13/C20, 14AWG
ECX-C14C15-14AWG-XX	C14 to C15 14AWG	Power Cord, Black, C14/C15, 14AWG
ECX-C14C19-14AWG-XX	C14 to C19 14AWG	Power Cord, Black, C14/C19, 14AWG
ECX-C14C15-16AWG-XX	C14 to C15 16AWG	Power Cord, Black, C14/C15, 16AWG
ECX-C15C20-16AWG-XX	C15 to C20 16AWG	Power Cord, Black, C14/C19, 14AWG
ECX-C19C20-12AWG-XX	C19 to C20 12AWG	Power Cord, Black, C19/C120, 12AWG
ECX-C19N515P-14AWG-XX	C19 to NEMA 5-15 14AWG	Power Cord, Black, C19/CNEMA 5-15, 14AWG



ENCONNEX AC6000
ECX-AC6000

The AC6000 is the first line-interactive UPS designed to both protect IT equipment from power outages and to supplement the AC grid during peak energy consumption. The UPS operates with an input and output of 208 V or 240 V AC, supporting equipment drawing up to 6kW. The AC6000’s power-dense 2U form factor also contains highly efficient power electronics with a state-of-the-art lithium-ion battery pack and management system. We believe it’s the last UPS you’ll ever need and it’s made in the USA.

SKU	Input Plug	Capacity	Lithium Battery Life	Form Factor
ECX-UPS-AC6000-0	North America: L6-30	6,000 W	7 Years	2U Horizontal
ECX-UPS-AC6000-1	International: IEC309	6,000 W	7 Years	2U Horizontal
ECX-UPS-AC6000-2	North America: CS8265	6,000 W	7 Years	2U Horizontal

Product Features

6kW of Lithium-ion Power

- For 6 full minutes
- 330% increased life over lead acid

Fast Recharge

- 1 hour recharge to 90%

Maintenance Free/Service Free

- Up to 7 years of battery life Compact Design
- 2U of rack space
- 50% - 75% lighter than lead acid

Advanced Battery Management

- Full state of health and charge
- Controls, protects and informs
- Thermal management of cells

Larger Operating Temperature

- Deliver full power and run-time, even at 40C

Peak Shave Capability

- Supplements the grid with available Lithium-ion power

Smart Communication

- Supports Serial & SNMP
- Remote HTTP dashboard
- Supports IPv4 and IPv6
- Multifunction LCD panel
- Reports critical performance metrics

Cost of Ownership

- No battery replacement necessary
- ROI in as little as 2 years
- Operational savings using “peak shave” feature

Looking to Power Up your Integrated Cabinet?

The AC6000 is a perfect fit with our Office-in-a-Box (OIB) and Advanced Office-in-a-Box (AOIB) Solutions.

In-Row Cooling (IRC) Units

The Enconnex In-Row Cooling unit (IRC) is an industry-leading, row-based cooling unit designed to offer a high-density cooling option for customers looking to increase operational efficiency, remove dangerous heat build-up, and reduce overall operating costs in your data center. Engineered with high-quality components, and managed by intelligent controls, the Enconnex IRC is the perfect solution for your high-density hot aisle and cold aisle containment environments.

IRC Benefits

Exceptional ROI: The Enconnex IRC is one of the top performing row-based cooling units in the industry with outstanding cost per kW performance.

High-Density in a Small Package: The IRC can manage up to 100kW of compute capacity in a single cabinet footprint.

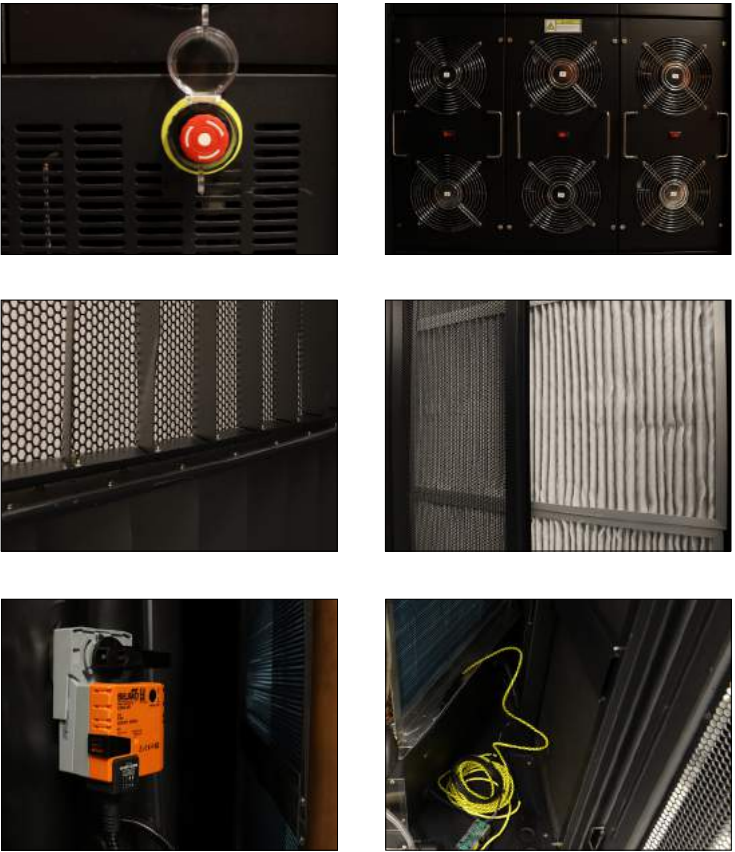
Flexible Solutions: Our IRC units are available in both chilled water and direct expansion versions and come in various cabinet sizes to meet the needs of your environment.

Robust Design: The Enconnex IRC has been engineered using the best quality components found in the market today which helps improve performance and efficiency, and ensures a longer product life.

Intelligent Controls: The IRC is available with different levels of intelligent controls. Our controls are designed to be intuitive and informative, giving you all of the management features you need to maintain your environment.

Expandable: Our units are designed to work together. Expanding your capacity is as simple as adding more units to your solution so that you can purchase the cooling capacity you need today, and expand as your needs change in the future.

SKU	Cooling Type	Region	Width	Height	Depth	Weight
ECX-IRC-CW91245GL1W1S	Chilled Water (CW)	International	900mm	2154mm	1200mm	510Kg (1125 lbs)
ECX-IRC-CW91245US1W2S	Chilled Water (CW)	North America	900mm	2154mm	1200mm	510Kg (1125 lbs)
ECX-IRC-DX91245GL1W3S	Direct Expansion (DX)	International	900mm	2154mm	1200mm	620Kg (1365 lbs)
ECX-IRC-DX91245US1W4S	Direct Expansion (DX)	North America	900mm	2154mm	1200mm	620Kg (1365 lbs)



Applications

- High density / high compute environments
- Hot aisle / cold aisle containment pods
- New data center builds or legacy expansions
- Used in conjunction with legacy room-cooling solutions
- Colocation sites
- Managed service providers
- Testing facilities where temperature control is critical

Enconnex Product Catalog

Contact Us

Address:
2700 Mill Street, Unit 400,
Reno, NV 89502

Email: sales@enconnex.com

Phone: +1 (833) TALK ECX