



S4 Benelux

IT INFRASTRUCTURE



S-RACK



SMART RACK SOLUTIONS FOR DATACENTERS AND BUILDINGS



S·RACK

High quality racks designed and manufactured in Europe
conform IEC 60297, IEC 60529, IEC 61587-1 and ISO 9001.

Static load rating: 1500kg

S4 BENELUX BV

A Higher Standard of Support and Service

S4 Benelux, an independent and privately owned Belgian company, was founded in 2006 as Saifor Benelux. Our offices and 600m2 warehouse are centrally located in Kontich/Belgium.

S4 domains of expertise:

- Standard and tailor-made racks
- Cooling and containment
- Monitoring and access control
- Basic and intelligent power distribution units (PDU's)
- Structured cabling (copper and fiber)
- Fiber optic ducting systems
- Cable management
- Consoles for control rooms

S4 mission:

Delivering high-end products, responding to the most exigent requirements of IT infrastructure in datacenters, (intelligent) buildings, control and telecom rooms.

S4 vision:

Offering our customers stability, top products and end-to-end solutions with the best-in-class support and service.

Rack types	04
S-RACK Standard	05
S-RACK Extension	06
S-RACK Installer	07
S-RACK Colocation	08
Doors and panels	10
19" Mounts	14
Top & bottom covers	16
Shelves	18
Cable management	20
Door handles	25
Installation and maintenance	25
Basic & Intelligent PDU's	29
Dimensions S-RACK Standard & Extension	30
Dimensions S-RACK Colocation	31





RACK TYPES



S-RACK STANDARD & EXTENSION 19" RACKS FOR DATACENTERS AND BUILDINGS

S-RACK has been created to provide easy installation and maximum natural ventilation in the most demanding projects. The racks can virtually accommodate all 19" equipment on the market. The longitudinal openings with big brushes on the top area allow easy entry of cables through the cabinet sides. Optional, the racks can be equipped with the revolutionary sliding ZAF (zero airflow) mount system, assuring air containment. S-RACKS can be build on specification and a full range of accessories is available.

Static load capacity : 1500kg



S-RACK INSTALLER 19" RACKS FOR NETWORKING AND STRUCTURED CABLING

The installer rack is available in 42U 800x800 and comes standard with double perforated doors in the front and the rear. This version is standard equipped with a 100mm plinth, 2 cable trays of 42U 225mm and 10 cable hoops. A full range of accessories is available.

Static load capacity : 1500kg



S-RACK COLOCATION 19" RACKS WITH MULTIPLE SECURED COMPARTMENTS

A full range of racks for colocation projects with 2, 3 or 4 compartments. The racks offer a high level of security. All compartments are separated from each other and have independent and secured vertical cable trays on both sides.

Static load capacity : 1500kg



S-RACK STANDARD is our base stand-alone configuration with 2 side panels.

STANDARD CONFIGURATION

- Widths 600 / 800 mm
- Heights 24U / 42U / 47U and 52U on request
- Depths 600* / 800 / 1000 / 1200 and 1400 on request
- 1x Frame
- 2x Side panel
- 1x Top cover with 2 brushes
- 2x Vented door** (1-point locking)
- 4x 19" Cabling mount
- 4x Adjustable foot
- 1x Earth kit + 1x bolt M8

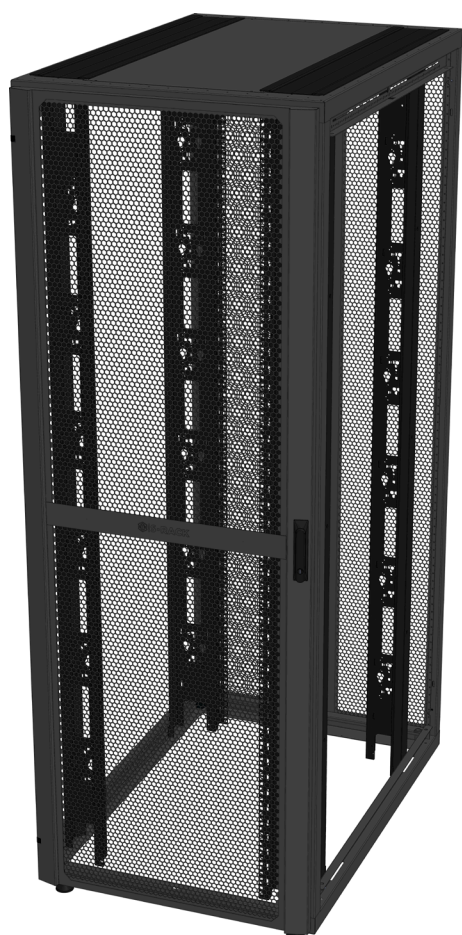
* 600mm depth only available in 24U heights
Other heights only on request.

** 600w : vented front door / vented rear door.
800w : vented front door / double vented rear door.

Other configurations on request.



Part Number	Height (U)	Height (mm)	Width (mm)	Depth (mm)	Doors	
					Front	Rear
CO000881	24U	1200	600	600	Vented	Vented
CO000883				800		
CO000884				1000		
CO000885				1200		
CO000886			800	600		Double Vented
CO000887				800		
CO000888				1000		
CO000889				1200		
CO000902	42U	2000	600	800	Vented	Vented
CO000890				1000		
CO000892				1200		
CO000903			800	800		Double Vented
CO000891				1000		
CO000893				1200		
CO000904	47U	2200	600	800	Vented	Vented
CO000938				1000		
CO000896				1200		
CO000905			800	800		Double Vented
CO000895				1000		
CO000897				1200		



S-RACK EXTENSION is our base configuration with a baying kit (without side panels)

EXTENSION CONFIGURATION

- Widths 600 / 800 mm
- Heights 24U / 42U / 47U and 52U on request
- Depths 600* / 800 / 1000 / 1200 and 1400 on request
- 1x Frame
- 1x Top cover with 2 brushes
- 2x Vented door* (1-point locking)
- 4x 19" Cabling mount
- 4x Adjustable foot
- 1x Baying kit
- 1x Earth kit + 1x bolt M8

* 600mm depth only available in 24U heights
Other heights only on request.

** 600w : vented front door / vented rear door.
800w : vented front door / double vented rear door.

Other configurations on request.

S-RACK EXTENSION

Part Number	Height (U)	Height (mm)	Width (mm)	Depth (mm)	Doors	
					Front	Rear
CO000906	42U	2000	600	800	Vented	Vented
CO000878				1000		
CO000899				1200		
CO000907			800	800		Double Vented
CO000898				1000		
CO000867				1200		
CO000908	47U	2200	600	800	Vented	Vented
CO000894				1000		
CO000901				1200		
CO000909			800	800		Double Vented
CO000870				1000		
CO000866				1200		



S-RACK INSTALLER

S-RACK INSTALLER is our base configuration for Installer use.

INSTALLER CONFIGURATION

- Width 800 mm
- Height 42U
- Depth 800
- 1x Frame
- 2x Side panel
- 1x Top cover with 2 brushes
- 2x Double vented door (2-point locking)
- 1x Plinth 100mm
- 2x Cable tray 225mm
- 10x Cable hoop
- 4x 19" Cabling mount
- 4x Adjustable foot
- 1x Earth kit + 1x bolt M8

Other configurations on request.



Part Number	Height (U)	Height (mm)	Width (mm)	Depth (mm)	Doors	
					Front	Rear
CO000952	42U	2000	800	800	Double Vented	Double Vented



COLOCATION CONFIGURATION

- Widths 600 / 800 mm
- Heights 42U / 47U
- Depths 1000 / 1200mm
- 42U compartments: 4x9U / 3x13U / 2x21U
- 47U compartments: 4x10U / 3x14U / 2x23U
- 1x Frame
- 2x Side panel
- 1x Top cover with individual access to each compartment
- 2x Vented door (1-point locking) per compartment
- 4x 19" Cabling mount per compartment
- 1x Tray per compartment
- 2x Secured cable channel to each compartment
- 4x Adjustable foot
- 1x Earth kit + 1x bolt M8

A minimum order quantity may apply. Please contact our sales department.

Part Number	Height (U)	Height (mm)	Width (mm)	Depth (mm)	Number of Compartments
CO000911	42U	2000	600	1000	2
CO000913				1200	2
CO000919				1000	3
CO000920				1200	3
CO000927				1000	4
CO000928				1200	4
CO000914			800	1000	2
CO000912				1200	2
CO000921				1000	3
CO000922				1200	3
CO000929				1000	4
CO000930				1200	4
CO000915	47U	2200	600	1000	2
CO000916				1200	2
CO000923				1000	3
CO000924				1200	3
CO000931				1000	4
CO000932				1200	4
CO000917			800	1000	2
CO000918				1200	2
CO000925				1000	3
CO000926				1200	3
CO000933				1000	4
CO000934				1200	4

 **S-RACK**



STEEL DOOR

Steel door for extra privacy or protection requirements. 1-Point locking, 4-point locking on request. Multiple handles available.

Color: RAL 7021 (RAL 7035 on request).

Part Number	Height	Width
S000031	24U	600
S000032	24U	800
S000033	42U	600
S000034	42U	800
S000035	47U	600
S000036	47U	800



DOUBLE STEEL DOOR

Double steel door suitable for narrow aisles and with extra privacy or protection requirements. 2-Point locking. Multiple handles available.

Color: RAL 7021 (RAL 7035 on request).

Part Number	Height	Width
S000037	24U	600
S000038	24U	800
S000039	42U	600
S000040	42U	800
S000041	47U	600
S000042	47U	800



VENTED DOOR

Vented door for an improved efficiency, combining an increased ventilation surface and a honeycomb pattern allowing 80.4 % free air passage. On project base a perforation rate of up to 85% can be offered. 1-Point locking, 4-point locking on request. Multiple handles available.

Color: RAL 7021 (RAL 7035 on request).

Part Number	Height	Width
S000013	24U	600
S000014	24U	800
S000015	42U	600
S000016	42U	800
S000017	47U	600
S000018	47U	800



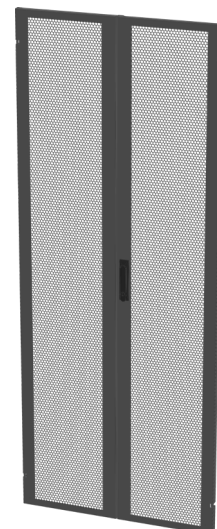
DOORS

Part Number	Height	Width
S000019	24U	600
S000020	24U	800
S000021	42U	600
S000022	42U	800
S000023	47U	600
S000024	47U	800

DOUBLE VENTED DOOR

Double perforated door, particularly suitable for narrow aisles. Allows 80.4% free air passage. On project base a perforation rate of up to 85% can be offered. 2-Point locking. Multiple handles available.

Color: RAL 7021 (RAL 7035 on request).



Part Number	Height	Width
S000025	24U	600
S000026	24U	800
S000027	42U	600
S000028	42U	800
S000029	47U	600
S000030	47U	800

GLASS DOOR

Glass door with security glass for interior visibility. 1-Point locking, upgradable to 4. Multiple closing handle options available.

Color: RAL 7021 (RAL 7035 on request).

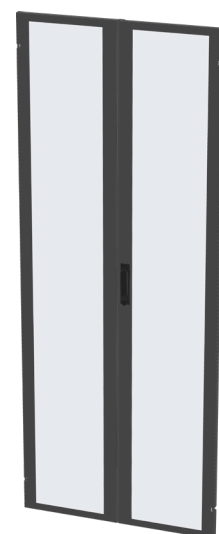


Part Number	Height	Width
S000013	24U	600
S000014	24U	800
S000015	42U	600
S000016	42U	800
S000017	47U	600
S000018	47U	800

DOUBLE GLASS DOOR

Double glass door with security glass for interior visibility. Particularly suitable for narrow aisles. 2-Point locking. Multiple handles available.

Color: RAL 7021 (RAL 7035 on request).





SIDE PANEL

Easy removable side panels with slam lock system. No tools required. The lock includes a security key. Can also be used as an intermediate panel. The 1000 and 1200mm deep panels come with 2 locks. 1400mm deep on request.

Color: RAL 7021 (RAL 7035 on request).

Part Number	Height	Depth
S000001	24U	600
S000002	24U	800
S000003	24U	1000
S000004	24U	1200
S000006	42U	800
S000007	42U	1000
S000008	42U	1200
S000010	47U	800
S000011	47U	1000
S000012	47U	1200



SIDE PANEL WITH CABLE ENTRY

Easy removable intermediate panels with 3 cable brushes of 250cm² on each side. Slam lock system with a security key. No tools required. Can also be used as intermediate panel. The 1000 and 1200mm deep panels come with 2 locks. 1400mm deep on request.

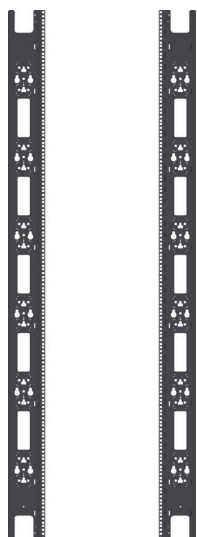
Color: RAL 7021 (RAL 7035 on request).

Part Number	Height	Depth
S000074	42U	1000
S000075	42U	1200
S000076	47U	1000
S000077	47U	1200





19" MOUNTS



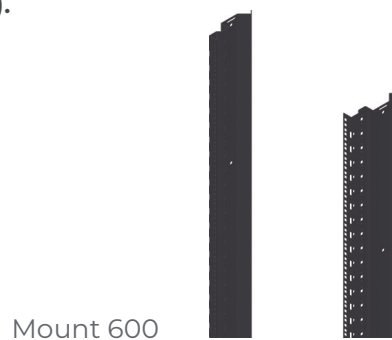
19" CABLING MOUNT

The 19" cabling mounts are continuously adjustable in depth. The 800w versions are ready to accept fingers for high density cable management, metal or plastic rings, edge protection frames, spools, pdu's etc.

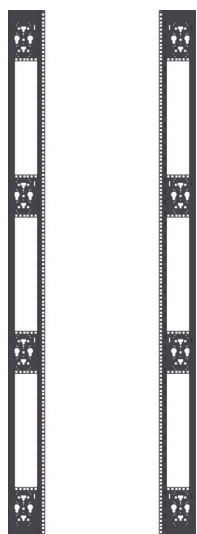
Color: RAL 9005 (RAL 7035 on request).

Mount 800

Part Number	Height	Width
S000043	24U	600
S000044	42U	600
S000045	47U	600
S000046	24U	800
S000047	42U	800
S000048	47U	800



Mount 600



19" 2U CABLING MOUNT

The 19" 2U cabling mounts are continuously adjustable in depth. This version is only available in 800w and comes with vertical cutouts for mounting extra 19" equipment, pdu's, cable management accessories etc. 2x 2U for the 24U mount. 3x 2U for the 42 / 47U mounts.

Color: RAL 9005 (RAL 7035 on request).

Part Number	Height	Width
S000055	24U	800
S000056	42U	800
S000057	47U	800



19" MOUNT SUPPORT

19" mount supports providing extra rigidity to the rack structure.

Color: RAL 9005 (RAL 7035 on request).

Part Number	Depth
SR000113	600
SR000114	800
SR000115	1000
SR000116	1200



19" MOUNTS

Part Number	Height	Width
S000049	24U	600
S000050	42U	600
S000051	47U	600
S000052	24U	800
S000053	42U	800
S000054	47U	800

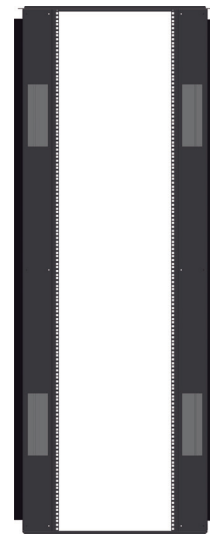


Mount 600

19" ZERO AIRFLOW MOUNT

The 19" zero airflow mounts are designed for use in containments. They seal the entire front surface of the rack to create a barrier against air flows. The mounts can be adjusted in depth while retaining the sealing capability. Including 2 cable entries (brushes) per mount.

Color: RAL 9005 (RAL 7035 on request).



Mount 800

Part Number	Height	Width
S000125	24U	800
S000126	42U	800
S000127	47U	800

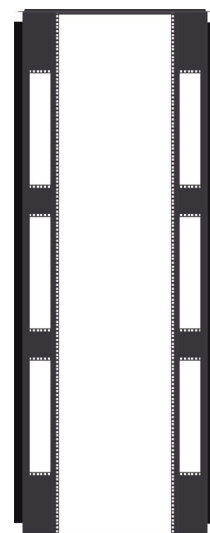
19" ZERO AIRFLOW 2U MOUNT

The 19" zero airflow mounts are designed for use in containments. They seal the entire front surface of the rack to create a barrier against air flows. The mounts can be adjusted in depth while retaining the sealing capability. This version is only available in 800w and comes with vertical cutouts for mounting extra 19" equipment, pdu's, cable management accessories etc.

2x 2U for the 24U mount.

3x 2U for the 42 / 47U mounts.

Color: RAL 9005 (RAL 7035 on request).



FRONT TO BACK CABLE DUCT (INNER SIDE)

Allows cable routing from the front to the rear of the rack. Mounted between the holes of two 800w 19" mounts. Adjustable in depth.

Color: RAL 9005 (RAL 7035 on request).

Part Number

E0003524



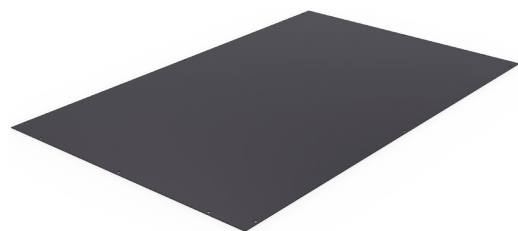
FRONT TO BACK CABLE DUCT (OUTER SIDE)

Allows cable routing from the front to the rear of the rack. Mounted between two 800w 19" mounts and the side panel. Adjustable in depth.

Color: RAL 9005 (RAL 7035 on request).

Part Number

E0003525

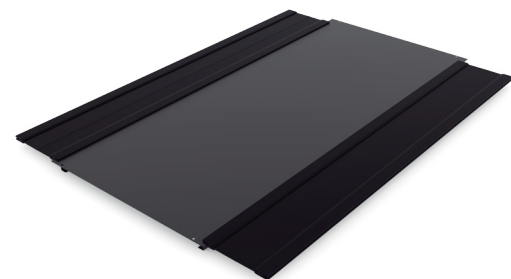


STEEL COVER

Steel cover used to protect the equipment against dust or objects and to prevent air recirculation in containments.

Color: RAL 7021 (RAL 7035 on request).

Part Number	Width x Depth
SR000123	600 x 600
SR000124	600 x 800
SR000125	600 x 1000
SR000126	600 x 1200
SR000127	800 x 600
SR000128	800 x 800
SR000129	800 x 1000
SR000130	800 x 1200

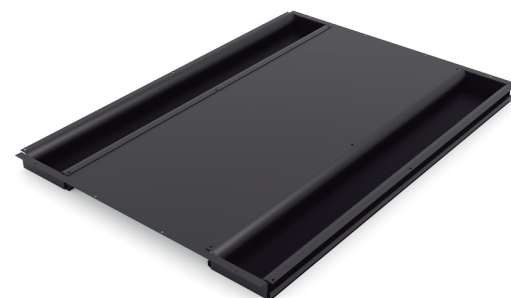


BRUSH COVER

Steel covers with longitudinal quality brushes on both sides. Used to protect the equipment against dust or objects and to prevent air recirculation in containments while allowing cable entry into the rack.

Color: RAL 7021 (RAL 7035 on request).

Part Number	Width x Depth
S000058	600 x 600
S000059	600 x 800
S000060	600 x 1000
S000061	600 x 1200
S000062	800 x 600
S000063	800 x 800
S000064	800 x 1000
S000065	800 x 1200



CABLING COVER

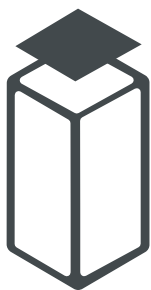
Steel covers with rounded inlets for cable protection and longitudinal quality brushes on both sides. Used to protect the equipment against dust or objects and to prevent air recirculation in containments while allowing cable entry into the rack.

Color: RAL 7021 (RAL 7035 on request).

Part Number	Width x Depth
S000066	600 x 600
S000067	600 x 800
S000068	600 x 1000
S000069	600 x 1200
S000070	800 x 600
S000071	800 x 800
S000072	800 x 1000
S000073	800 x 1200



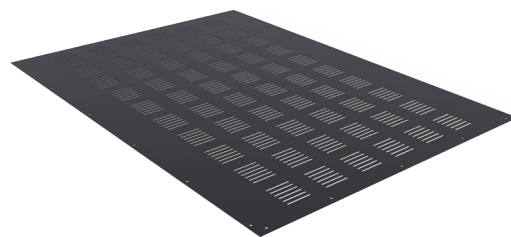
TOP & BOTTOM COVERS



VENTED COVER

Steel vented covers for natural ventilation.

Color: RAL 9005 (RAL 7035 on request).



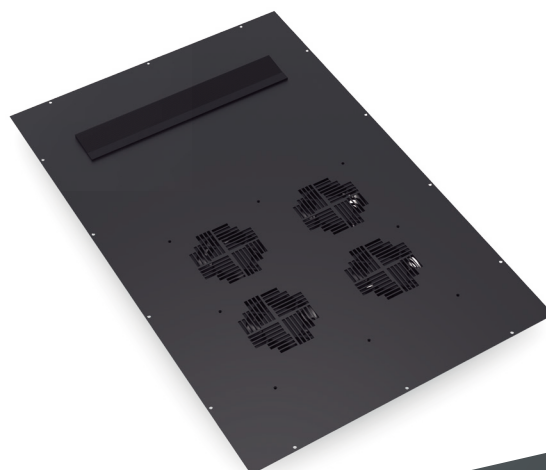
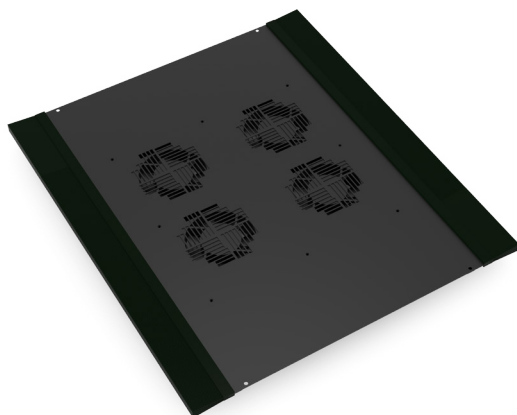
Part Number	Width x Depth
SR000139	600 x 600
SR000140	600 x 800
SR000141	600 x 1000
SR000142	600 x 1200
SR000143	800 x 600
SR000144	800 x 800
SR000145	800 x 1000
SR000146	800 x 1200

FAN UNIT

Top covers with 4 or 6 low noise fans and a digital thermostat for the extraction of hot air inside the rack. Equipped with a C14 connector.

Color: RAL 9005 (RAL 7035 on request).

Part Number	Number of fans	Width x Depth
S000087	4	600 x 600
S000088	4	600 x 800
S000089	4	600 x 1000
S000090	4	600 x 1200
S000091	6	600 x 1000
S000092	6	600 x 1200
S000093	4	800 x 600
S000094	4	800 x 800
S000095	4	800 x 1000
S000096	4	800 x 1200
S000097	6	800 x 1000
S000098	6	800 x 1200





SHELVES



FIXED SHELF

4 point fixed shelf for equipment support.
Load capacity : 50Kg.

Color: RAL 9005 (RAL 7035 on request).

Part Number	Rack Depth	Shelf Depth
S000120	600	325 mm
S000121	800	525 mm
S000122	1000	725 mm
S000123	1200	925 mm



SLIDING SHELF

4 point sliding shelf for equipment support.
Load capacity : 50Kg.

Color: RAL 9005 (RAL 7035 on request).

Part Number	Rack Depth	Shelf Depth
S000116	600	325 mm
S000117	800	525 mm
S000118	1000	725 mm
S000119	1200	925 mm

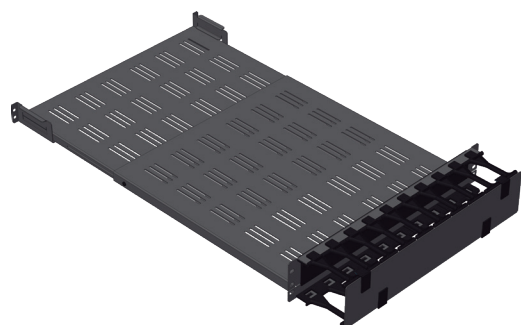


19" CANTILEVER SHELF

19" cantilever shelf 2U for light equipment. Load capacity : 20Kg.

Color: RAL 9005 (RAL 7035 on request).

Part Number	Depth
DR080256	300
DR080257	400



ADAPTIVE CABLE SHELF

Adaptive depth shelf equipped with a 2U cable management panel. Adjustable between 800 and 1200mm.

Color: RAL 9005 (RAL 7035 on request).

Part Number	Rack Depth
E0002306	800 to 1200



CABLE MANAGEMENT ACCESSORIES

www.s4benelux.be





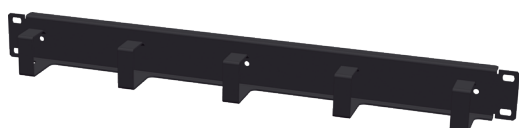
19" BRUSH PANEL

1U panel with brush and edge protection.

Color: RAL 9005 (RAL 7035 on request).

Part Number

IR020212



19" 1U CABLE MANAGEMENT PANEL

1U panel with 5 metal rings for horizontal cable organization. Available with 50 and 85mm deep rings.

Color: RAL 9005 (RAL 7035 on request).

Part Number

Depth

A100498

50mm

A100483

85mm



19" CABLE MANAGEMENT PANEL WITH COVER

19" panel with removable cover for horizontal cable organization.

Color: RAL 9005 (RAL 7035 on request).

Part Number

Height

DR080245

1U

DR080246

2U



19" CABLE MANAGEMENT PANEL WITH PLASTIC RINGS

1U or 2U panels with 4 thermoplastic rings for horizontal cable organization.

Color: RAL 9005 (RAL 7035 on request).

Part Number	Height	Ring Depth
S000215	1U	65 mm
S000216	1U	130 mm
S000217	2U	65 mm
S000218	2U	120 mm

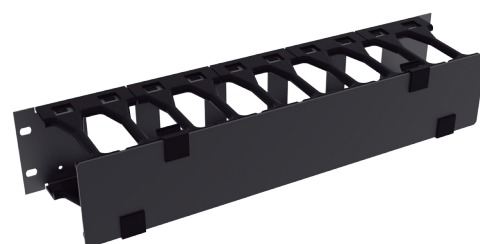


19" CABLE MANAGEMENT PANEL WITH FINGERS AND COVER

1U, 2U or 3U panels with fingers and removable cover for horizontal cable organization.

Color: RAL 9005 (RAL 7035 on request).

Part Number	Height
S000219	1U
S000220	2U
S000221	3U

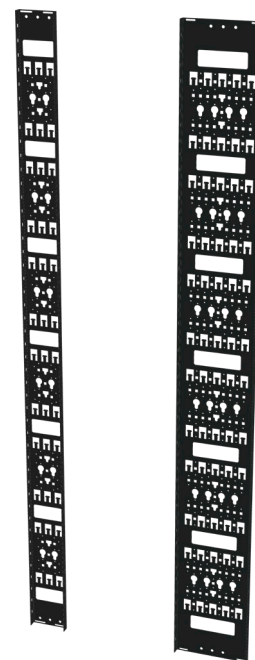


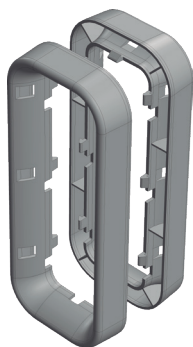
VERTICAL CABLE TRAY

Vertical cable trays for side mounting. Easy use of Velcro TM or cable ties and ready to accept fingers, spools, plastic frames and pdu's. 52U available on request.

Color: RAL 9005 (RAL 7035 on request).

Part Number	Height	Width
SR000117	24U	125 mm
SR000118	42U	125 mm
SR000119	47U	125 mm
SR000120	24U	250 mm
SR000121	42U	250 mm
SR000122	47U	250 mm





PROTECTIVE FRAMES

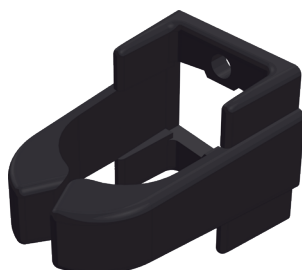
Plastic frames for the 19" cabling mounts. Used to protect the cables going from the front to the rear of the rack. Kit of 10 pcs.

Color : Grey

Part Number	
SR000315	
Pieces x Mount	Quantity
Mount 24U	4
Mount 42U	10
Mount 47U	10



CABLE MANAGEMENT

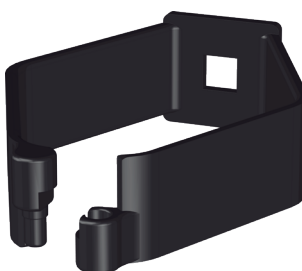
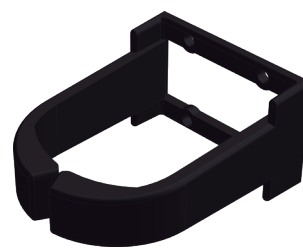
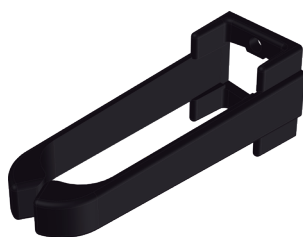


RING KITS

Thermoplastic rings used for cable routing. Can be mounted on the 19" mounts or the vertical cable trays. Kit of 4 pcs.

Color : Black

Part Number	Width x Depth
SR000309	1U 65 mm
SR000310	1U 130 mm
SR000311	2U 65 mm
SR000312	2U 120 mm

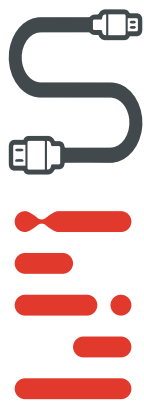


CLAMP KIT

Thermoplastic clamps can be fitted in horizontal or vertical position on the 19" cabling mounts or on the vertical cable trays. Kit of 4 pcs.

Color : Black

Part Number
S000222

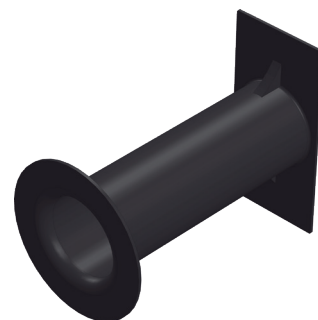


SPOOL FOR CABLE MANAGEMENT

Thermoplastic spool for the roll up of copper or fiber cables. Can be mounted on the 19" cabling mounts or on the vertical cable trays.

Color : Black

Part Number	Depth
SR000307	150mm

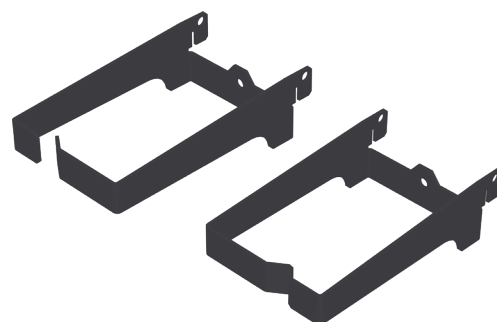


METAL CABLE HOOPS

Metal cable hoops for the vertical management of the cables on the 19" cabling mounts. Kit of 4 pcs (2 left and 2 right).

Color: RAL 9005 (RAL 7035 on request).

Part Number	Depth
SR000302	135mm

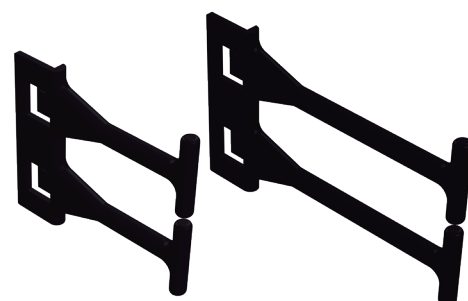


FINGERS

The 2U thermoplastic fingers can be mounted on the 800w 19" cabling mounts or on the vertical cable trays. Suitable for high density application.

Color: Black

Part Number	Depth
SR000304	100 mm
SR000305	150 mm



VELCRO™

Fine Velcro™ for copper and fiber cabling.

Color: Black

Part Number	Type
E0020709	Velcro™ 12,5mm reel 25m
E0020708	Velcro™ 20mm reel 25m





DOOR HANDLE WITH KEY LOCK

Security door handle with key.
Different keys or master keys on request.

Color : Black (Polyamide)

Part Number

SR000233



DOOR HANDLE WITH COMBINATION LOCK + KEY

Security door handle with combination lock + key.

Color : Black (Polyamide)

Part Number

ES002956



DOOR HANDLE WITH PUSH BUTTON

Door handle with push button for easy access.

Color : Black (Polyamide)

Part Number

SR000241



ELECTRONIC LOCKING SOLUTIONS

Access control solutions from a number of best-of-breed manufactures can be integrated.

Contact our sales department.



DOOR DETECTOR

Magnetic switch that indicates the status of the door.

Color : White

Part Number

ES002250



GROUNDING BAR

Vertical copper bar 20x5mm for grounding the equipment or the shielded patch panels inside the rack.

Color : Copper

Part Number

Height

S000374

24U

S000375

42U

S000376

47U



GROUNDING BOLT

M8x20 zinc plated bolt for grounding of the rack.

Part Number

SR000274



MAGNETIC LED LAMP

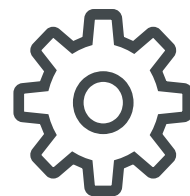
LED lamp for illuminating the rack. Easy magnetic mounting.

Color : White / Grey

Part Number

ES001231



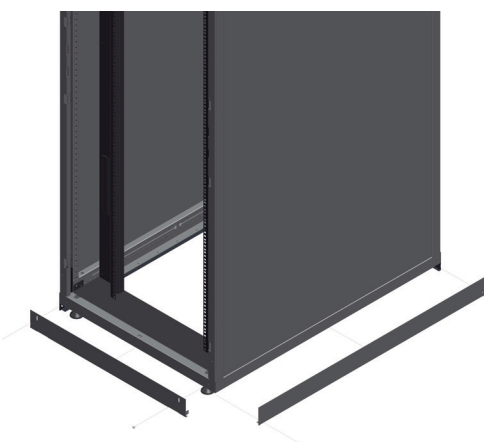


CASTORS AND FEET SUPPORT

The castors and feet supports can be used for racks that are frequently moved or relocated. Load capacity: 320kg.

Color: RAL 7021 (RAL 7035 on request).

Part Number	Width
S000223	600
S000224	800



ADJUSTABLE FEET COVERS

The adjustable feet covers close the gap between the floor and the rack frame. This is useful in aisles to prevent air recirculation.

Color: RAL 7021 (RAL 7035 on request).

Part Number	Depth	Length
SR000190	Frontal	600
SR000191	Frontal	800
SR000192	Lateral	600
SR000193	Lateral	800
SR000194	Lateral	1000
SR000195	Lateral	1200



PLINTH

The 100mm plinth can be used when cables are entering the rack from the bottom at locations where no technical floor is available.

Color: RAL 7021 (RAL 7035 on request).

Part Number	Width x Depth
S000099	600 x 600
S000100	600 x 800
S000101	600 x 1000
S000102	600 x 1200
S000103	800 x 600
S000104	800 x 800
S000105	800 x 1000
S000106	800 x 1200

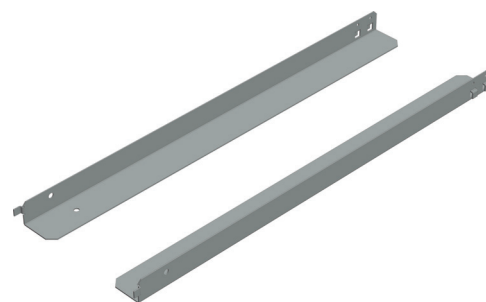


CHASSIS SUPPORTS

L-guides to support heavy equipment.

Color: Galvanized steel

Part Number	Rack Depth	Support Depth
S000225	600	315 mm
S000150	800	515 mm
S000226	1000	715 mm
S000227	1200	915 mm



PDU MOUNTING BRACKET

The universal bracket fits on the vertical PDU cable tray for compatibility with almost all PDU brands on the market. Kit of 2 pcs.

Color: RAL 9005 (RAL 7035 on request).

Part Number
SR000168

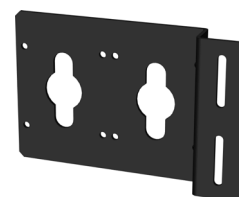


PDU COLUMN BRACKET

This PDU bracket can be mounted on the column of the rack. Max. 2 PDU's.

Color: RAL 9005 (RAL 7035 on request).

Part Number
SR000225



PDU CABLE TRAY

The 120mm wide recessed PDU cable tray minimizes the space taken by the PDU'S at the rear of the rack. Easy use of Velcro™ or cable ties and cable management accessories.

Color: RAL 9005 (RAL 7035 on request).

Part Number	U	Width
SR000226	24U	118 mm
SR000227	42U	118 mm
SR000228	47U	118 mm





ESD WRIST STRAP

Wrist strap and quick connector assembly, required to ensure the controlled discharge of the electrostatic charge generated by human contact. Comfortable and ergonomic wrist strap with 2m flexible cable. Complies with EN 61340-5-1/-2.

Part Number	Part Number
SR000216	ANTISTATIC EARTH ESD
SR000217	ANTISTATIC WRISTBAND ESD



CAGED NUTS AND SCREWS

Kit of 100 pcs.

Part Number	
A100435	M6 screws / plastic washers
A100436	M6 caged nuts



HOTLOK BLANKING PANELS

Tool-free, snap-in installation.

Color : Black (Gray or White on request)

Part Number	U
10031	1U
10033	2U



BASIC & INTELLIGENT PDU's



BASIC & INTELLIGENT PDU's

S4 Benelux will help you to select the right PDU and monitoring solution that manages power capacity, improves energy efficiency and reduces downtime.

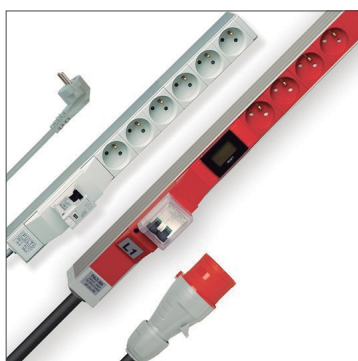
Intelligent PDU's

Selecting a reliable and cost-effective Power Distribution Unit can be challenging. S4 Benelux has more than 15 years' experience in basic and intelligent PDU's for racks and datacenters. We know the strengths and weaknesses of most PDU's on the market.

We offer a full product line of 1 and 3 phase versions : '**Basic**', '**Input metered**', '**Outputs metered**', '**Outputs switched**' and '**Outputs switched and metered**'. From Server Technology, we offer -48VDC 'Switched' versions.

Our specialists take into account important features as form factor, outlet type, outlet mix, outlet density, color coding, alternating phase, temperature rating, user interface, cord retention options, interoperability with management software, standard or latching relays, configuring procedures and much more.

S4 Benelux can help you with not only standardized out-of-the-box PDU's but also tailor-made PDU's.



Basic PDU's

ENSTO (PGE) is the well-known manufacturer of the high quality and reliable PULTI PDU's.

Since years the industry standard for basic and customized basic PDU's. PULTI covers a wide variety of electrical options, with or without protection and ranging from 10 to 63A in UTE, Schuko, IEC, NEMA, Swiss, Italian and mixed configurations.

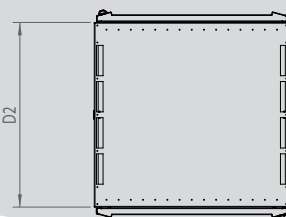
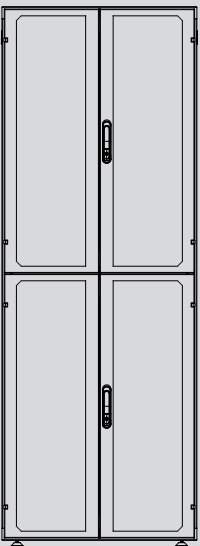
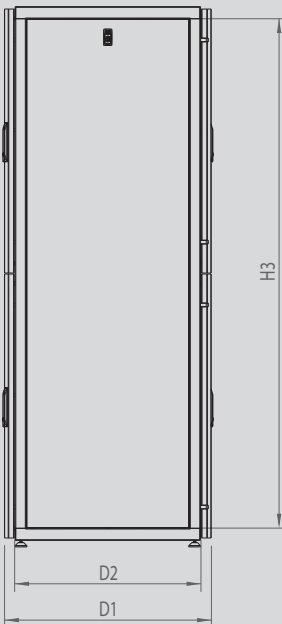
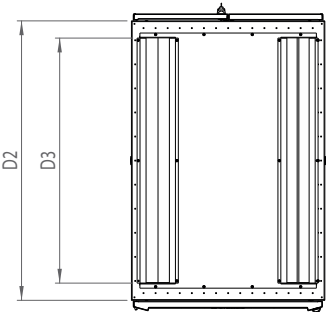
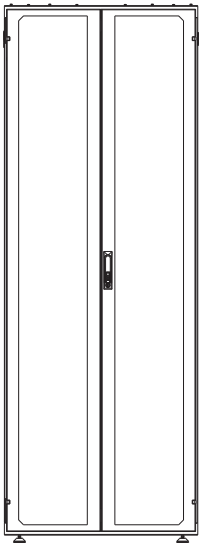
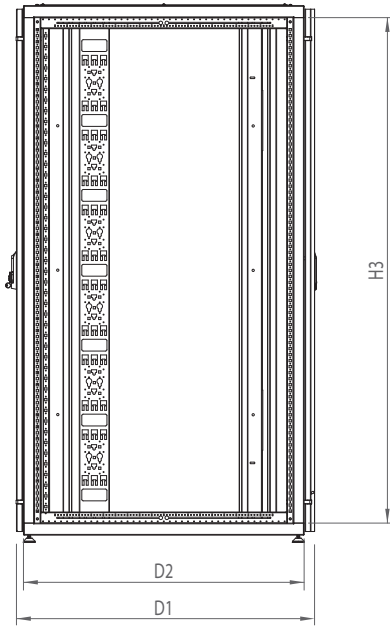
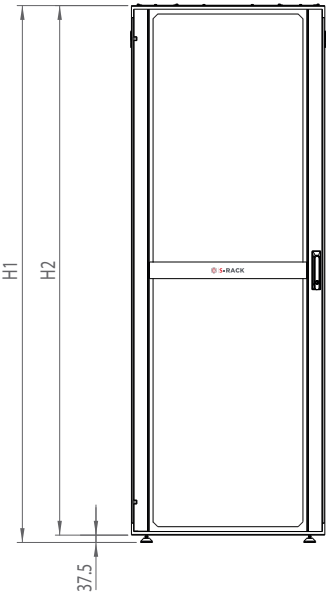
PULTI is available for horizontal (19") or vertical applications. Receptacles and rails are available in different colors.

DIMENSIONS S-RACK STANDARD & EXTENSION

Height (U)	H1 (mm)	H2 (mm)	H3 (mm)	Width (mm)	Depth (mm)	Depth with Doors			D2 (mm)	D3 (mm)	
						Front	Rear	D1 (mm)		Cover with Brush	Cabling Cover
24U	1237.5	1200	1100	600	600	Vented	Vented	650.9	561	436	420
					800			850.9	761	636	620
					1000			1050.9	961	836	820
					1200			1250.9	1161	1036	1020
				800	600		Double Vented	636.7	561	436	420
					800			836.7	761	636	620
					1000			1036.7	961	836	820
					1200			1236.7	1161	1036	1020
42U	2037.5	2000	1900	600	800	Vented	Vented	850.9	761	636	620
					1000			1050.9	961	836	820
					1200			1250.9	1161	1036	1020
					800		Double Vented	836.7	761	636	620
				800	1000			1036.7	961	836	820
					1200			1236.7	1161	1036	1020
					800		Double Vented	836.7	761	636	620
					1000			1036.7	961	836	820
47U	2237.5	2200	2100	600	800	Vented	Vented	850.9	761	636	620
					1000			1050.9	961	836	820
					1200			1250.9	1161	1036	1020
				800	800		Double Vented	836.7	761	636	620
					1000			1036.7	961	836	820
					1200			1236.7	1161	1036	1020
					800		Double Vented	836.7	761	636	620
					1000			1036.7	961	836	820

DIMENSIONS S-RACK COLOCATION

Height (U)	H1 (mm)	H2 (mm)	H3 (mm)	Width (mm)	Depth (mm)	D1 (mm)	D2 (mm)	USEFUL COMPARTMENT SPACE		
								2x (U)	3x (U)	4x(U)
42U	2037.5	2000	1900	600	1000	1050.9	1050.9	21U	13U	9U
					1200	1250.9	1250.9			
				800	1000	1050.9	1050.9			
					1200	1250.9	1250.9			
47U	2237.5	2200	2100	600	1000	1050.9	1050.9	23U	14U	10U
					1200	1250.9	1250.9			
				800	1000	1050.9	1050.9			
					1200	1250.9	1250.9			





S-RACK



S4 Benelux

IT INFRASTRUCTURE

Prins Boudewijnlaan 17, unit 4

2550 Kontich · BELGIUM

Tel. +32 3 444 05 00

info@s4benelux.be