



WALL MOUNT RACKS FOR A WIDE RANGE OF APPLICATIONS



High quality Wall Mount Racks designed and manufactured in Europe
conform IEC 60297, IEC 60529, IEC 61587-1 and ISO 9001.

Static load rating: 50kg

S4 BENELUX BV

A Higher Standard of Support and Service

S4 Benelux, an independent and privately owned Belgian company, was founded in 2006 as Saifor Benelux. Our offices and 600m2 warehouse are centrally located in Kontich/Belgium.

S4 domains of expertise:

- Standard and tailor-made racks
- Cooling and containment
- Monitoring and access control
- Basic and intelligent power distribution units (PDU's)
- Structured cabling (copper and fiber)
- Fiber optic ducting systems
- Cable management
- Consoles for control rooms

S4 mission:

Delivering high-end products, responding to the most exigent requirements of IT infrastructure in datacenters, (intelligent) buildings, control and telecom rooms.

S4 vision:

Offering our customers stability, top products and end-to-end solutions with the best-in-class support and service.

Wall Mount Rack types	04
Wall Mount Rack 1 part	05
Wall Mount Rack 2 parts	06
Cable management	08
General accessories	10
Dimensions Wall Mount Racks	11



**W-RACK 1 PART****19" WALL MOUNT RACKS 500 or 600
Depth**

Wall mount racks save valuable floor space and are versatile for a wide range of applications. They can be used as mini telecommunication room, as an enclosure for zone cabling in intelligent buildings, passive optical networks or wherever full-size cabinets are not required.

- Light but robust structure.
- Supplied fully assembled.
- Adjustable 19" mounts.
- Wide range of accessories available.

**W-RACK 2 PARTS****19" WALL MOUNT RACKS 650 Depth**

Wall mount racks designed with a hinged part for easy rear access. They can be used as mini telecommunication room, as an enclosure for zone cabling in intelligent buildings, passive optical networks or wherever full-size cabinets are not required.

- Light but robust structure.
- Supplied assembled.
- Adjustable 19" mounts.
- Wide range of accessories available.

19" WALL MOUNT RACKS FOR A WIDE RANGE OF APPLICATIONS

1 PART CONFIGURATION

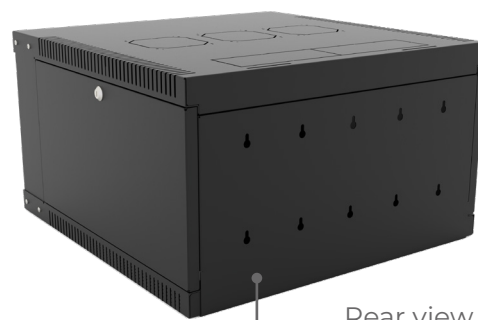
- Width 600 mm
- Heights 6U / 9U / 12U / 15U / 18U and 21U*
- Depths 500 and 600mm
- 1x Frame
- 2x Side panel (1-point locking)
- Pre-punched top and bottom part
- 1x Glass door (1-point locking)**
- 1x pair 19" adjustable mounts
- 1x Earth kit

* 18U and 21U only available in 600 depths.
Other heights only on request.

** Metal door on request

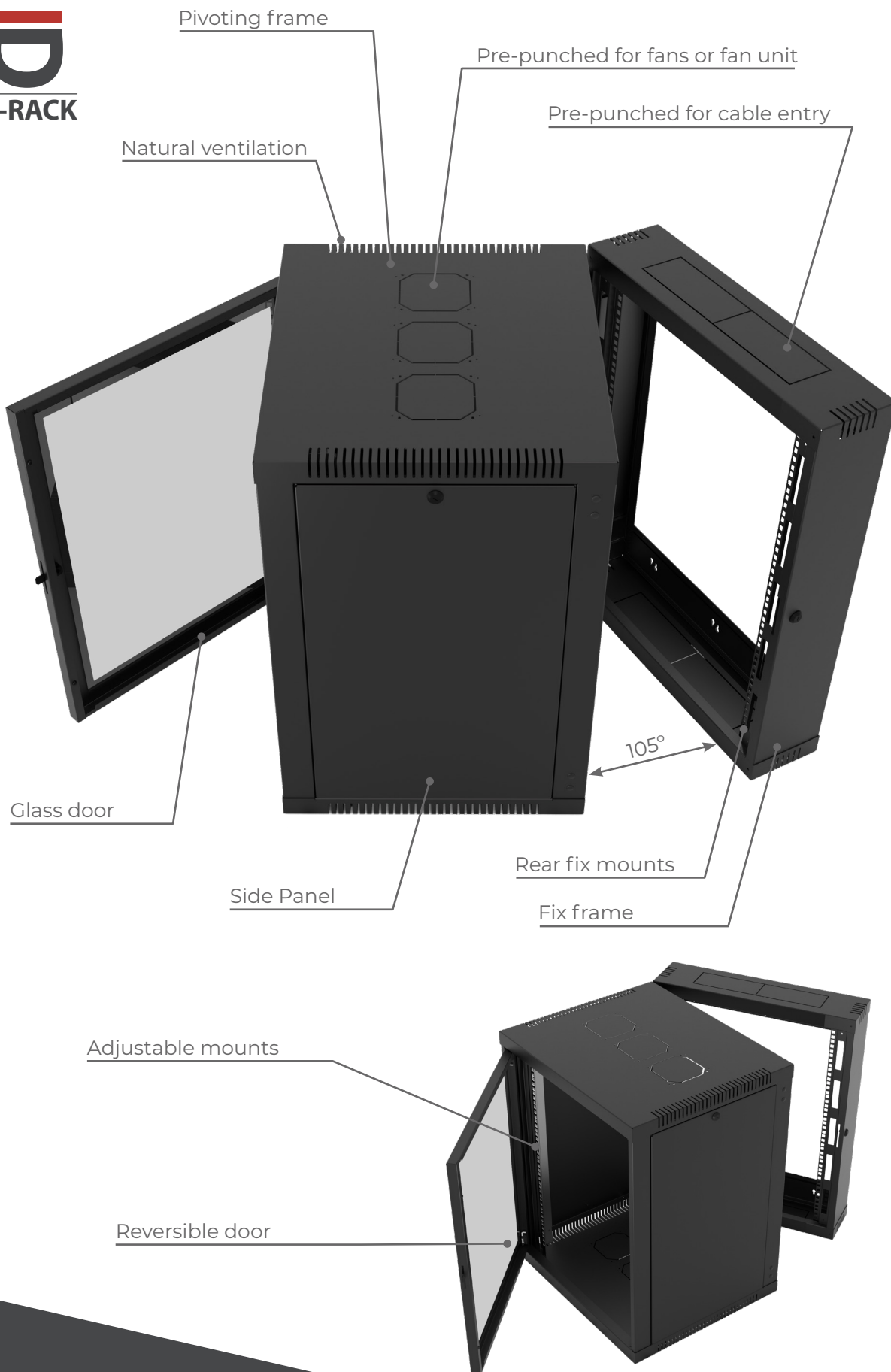
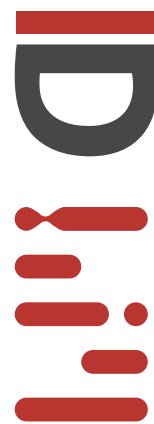


Front view



Rear view

Part Number	Height (U)	Height (mm)	Width (mm)	Depth (mm)
MD050001	6U	346,5	600	500
MD050002	9U	481,5		
MD050003	12U	614		
MD050004	15U	750		
MD050005	6U	346,5		600
MD050006	9U	481,5		
MD050007	12U	614		
MD050008	15U	750		
MD050024	18U	881,5		
MD050026	21U	1014		
MD050040	24U	1150		



WALL MOUNT RACK 2 PARTS

19" WALL MOUNT RACKS FOR A WIDE RANGE OF APPLICATIONS

2 PARTS CONFIGURATION

- Width 600 mm
- Heights 6U / 15U / 18U and 21U
- Depth 650mm
- 1x Pivoting frame
- 1x Fix frame
- 2x Side panel (1-point locking)
- Pre-punched top and bottom part
- 1x Glass door (1-point locking)*
- 1x pair 19" adjustable mounts
- 2x 19" fix mount
- 1x Earth kit

* Metal door on request

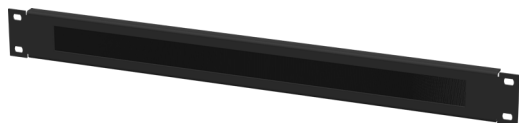


Front view



Rear view

Part Number	Height (U)	Height (mm)	Width (mm)	Depth (mm)
MD050013	6U	346,5	600	650
MD050041	9U	481,5		
MD050042	12U	614		
MD050012	15U	750		
MD050025	18U	881,5		
MD050027	21U	1014		



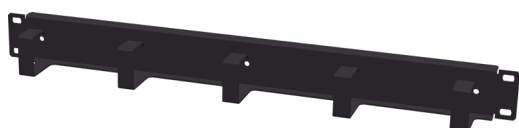
19" BRUSH PANEL

1U panel with brush and edge protection.

Color: RAL 9005 (RAL 7035 on request).

Part Number

IR020212



19" 1U CABLE MANAGEMENT PANEL

1U panel with 5 metal rings for horizontal cable organization. Available with 50 and 85mm deep rings.

Color: RAL 9005 (RAL 7035 on request).

Part Number	Depth
-------------	-------

A100498	50mm
---------	------

A100483	85mm
---------	------



19" CABLE MANAGEMENT PANEL WITH COVER

19" panel with removable cover for horizontal cable organization.

Color: RAL 9005 (RAL 7035 on request).

Part Number	Height
-------------	--------

DR080245	1U
----------	----

DR080246	2U
----------	----



19" CABLE MANAGEMENT PANEL WITH PLASTIC RINGS

1U or 2U panels with 4 thermoplastic rings for horizontal cable organization.

Color: RAL 9005 (RAL 7035 on request).

Part Number	Height	Ring Depth
S000215	1U	65 mm
S000216	1U	130 mm
S000217	2U	65 mm
S000218	2U	120 mm

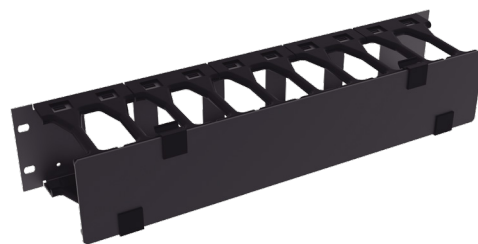


19" CABLE MANAGEMENT PANEL WITH FINGERS AND COVER

1U, 2U or 3U panels with fingers and removable cover for horizontal cable organization.

Color: RAL 9005 (RAL 7035 on request).

Part Number	Height
S000219	1U
S000220	2U
S000221	3U



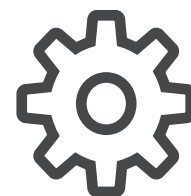
CABLE ENTRY BRUSH

Brush cover for easy cable entry.

Color: RAL 9005 (RAL 7035 on request).

Part Number
S.000466





FAN UNIT

Top covers with 2 low noise fans for the extraction of hot air inside the rack. With or without digital thermostat. Equipped with a C14 connector.

Color: RAL 9005 (RAL 7035 on request).

Part Number	Model
S.000465	Without thermostat
S.000464	With thermostat



19" CANTILEVER SHELF

19" cantilever shelf 2U for light equipment. Load capacity : 20Kg.

Color: RAL 9005 (RAL 7035 on request).

Part Number	Depth
DR080256	300
DR080257	400



VELCRO™

Fine Velcro™ for copper and fiber cabling.

Color: Black

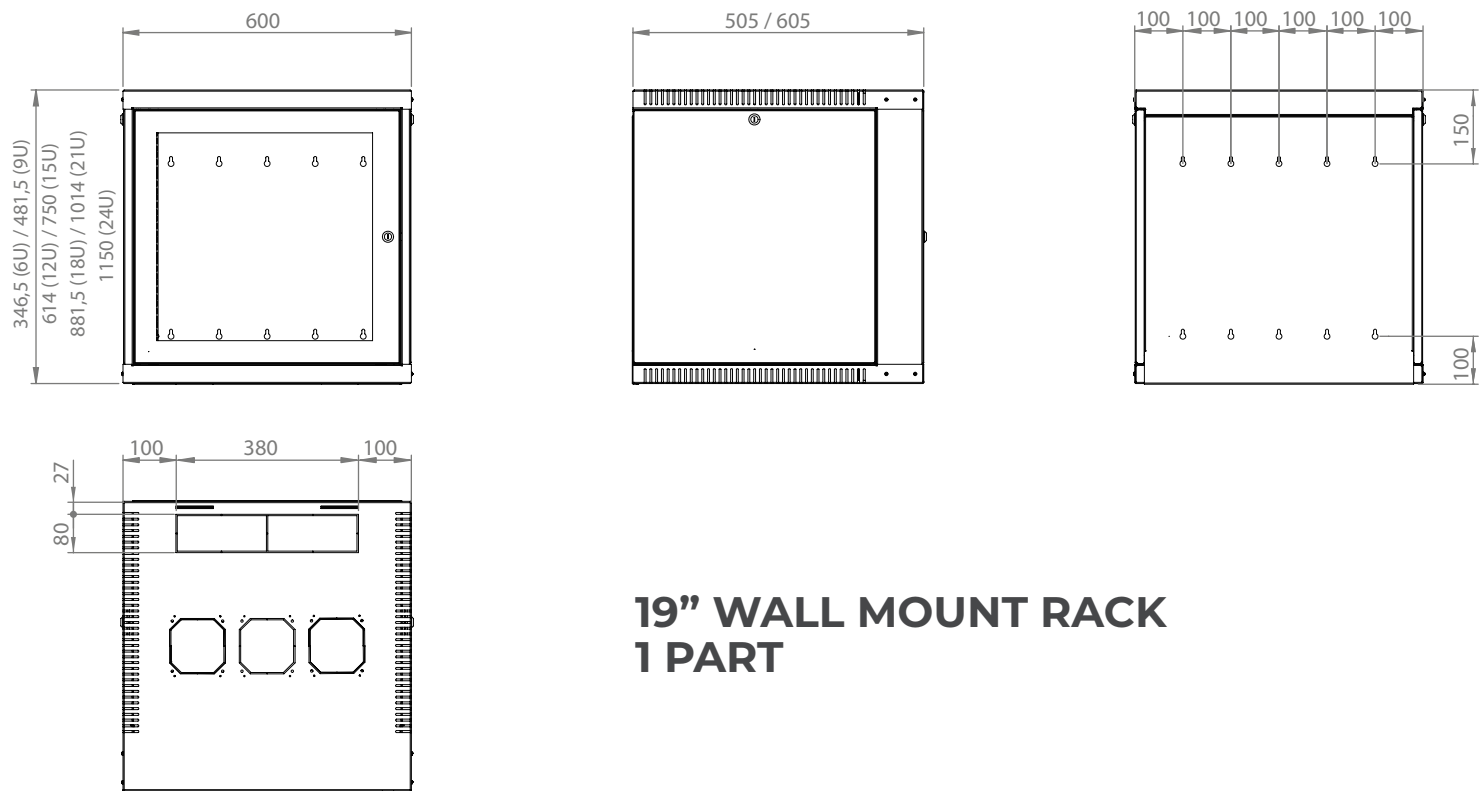
Part Number	
E0020709	Velcro™ 12,5mm reel 25m
E0020708	Velcro™ 20mm reel 25m



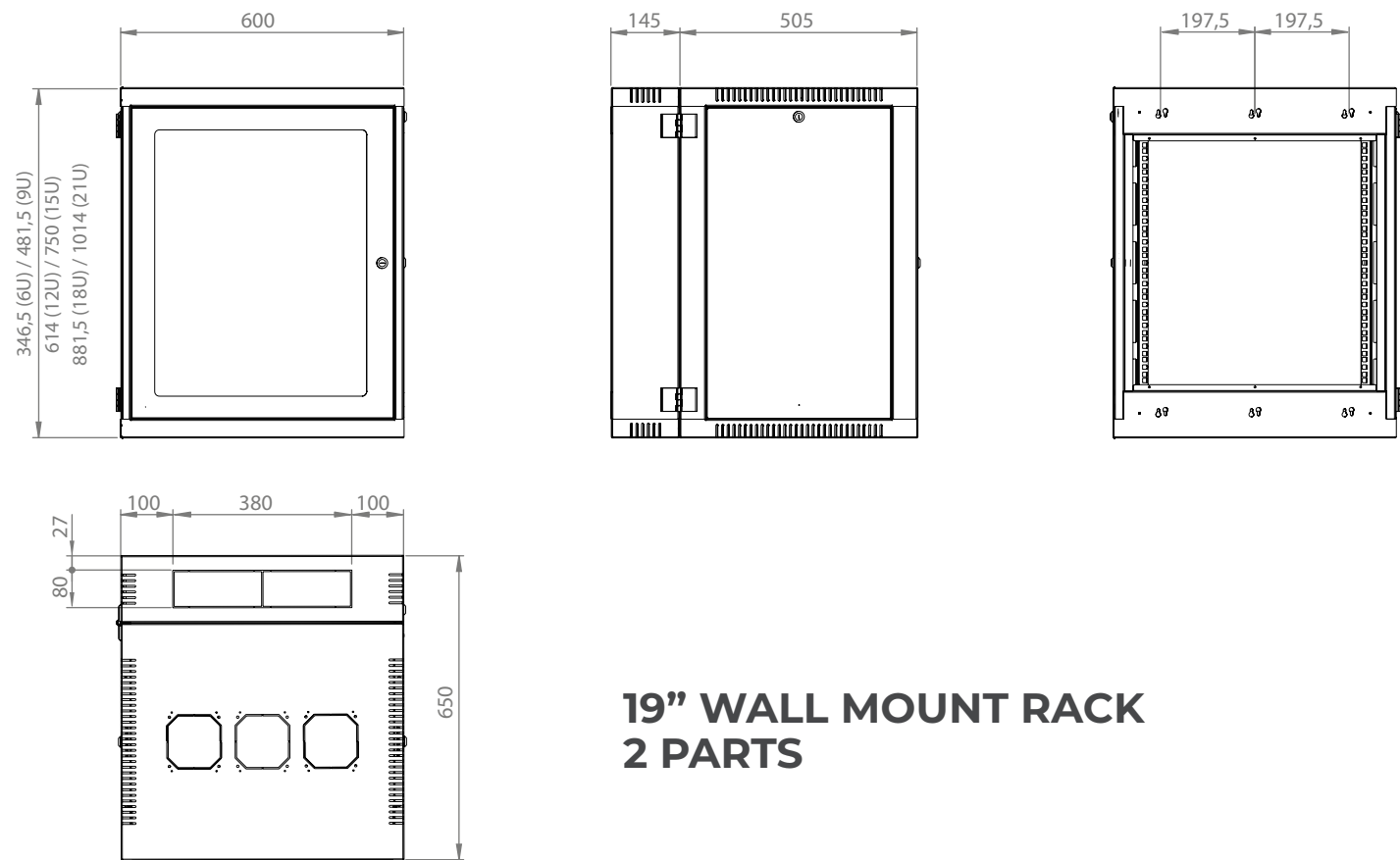
CAGED NUTS AND SCREWS

Kit of 100 pcs.

Part Number	
A100435	M6 screws / plastic washers
A100436	M6 caged nuts



**19" WALL MOUNT RACK
1 PART**



**19" WALL MOUNT RACK
2 PARTS**



Prins Boudewijnlaan 17, unit 4
2550 Kontich · BELGIUM
Tel. +32 3 444 05 00
info@s4benelux.be